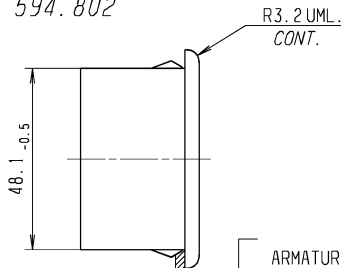
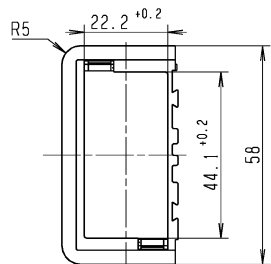


Bemusterung und Freigabe nach SWF 20.100

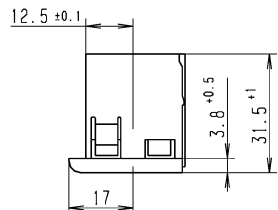
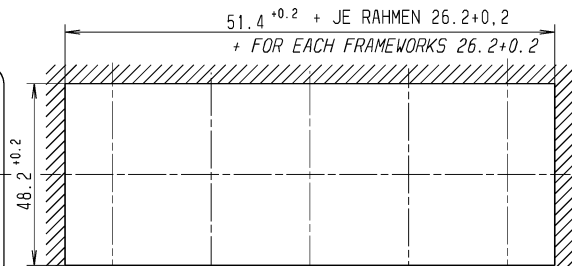
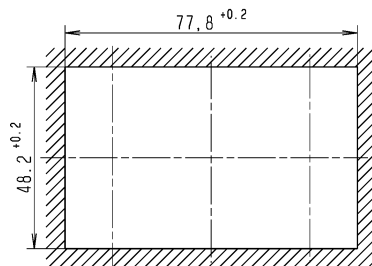
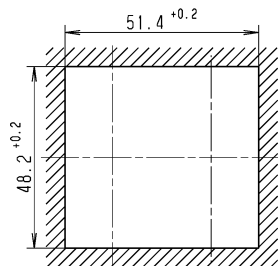
Sampling and Release to SWF 20.100

RAHMEN 594.802
FRAMEWORK 594.802



ARMATURENBRETTDICKE:
OHNE SCHUTZKAPPE 1-2,5 MM
MIT SCHUTZKAPPE 1.1,5 MM
INSTRUMENT PANEL THICKNESS:
WITHOUT PROTECTIVE CAP 1-2,5 MM
WITH PROTECTIVE CAP 1-1,5 MM

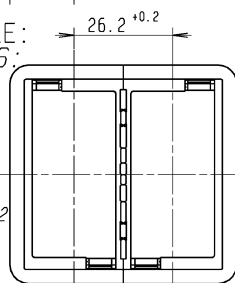
EINBAUEFFNUNG:
INSTALLATION ORIFICE:



BEISPIELE:
EXAMPLES:

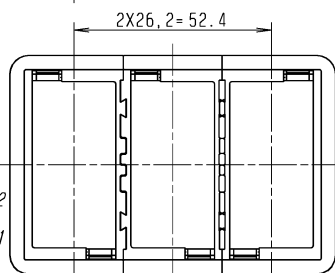
2 x RAHMEN
594.802

2 X FRAME
WORK 594.802



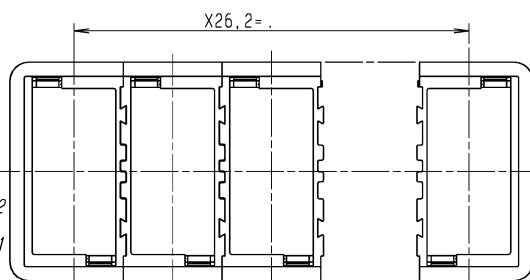
2 x RAHMEN
594.802
1 x RAHMEN
594.801

2 X FRAME
WORK 594.802
1 X FRAME
WORK 594.801



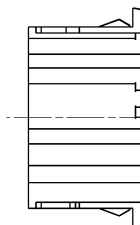
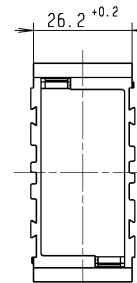
2 x RAHMEN
594.802
x RAHMEN
594.801

2 X FRAME
WORK 594.802
X FRAME
WORK 594.801



Aen.-Nr. Rev. no.	Feld Zone	Art der Aenderung	Revision	Tag Date	Name Name	M
03532268		neu eingefuehrt	NEW INTRODUCED			
	E8	Mass 12,5+0,1 war 12,5;	DIM. 12,5+0,1 WAS 12,5;			
	D7	Mass 26,2+0,2 war 26,2;	DIM. 26,2+0,2 WAS 26,2;			
	D5	Mass 51,4+0,2 war 51,3+0,2;	DIM. 51,4+0,2 WAS 51,3+0,2;			
	B5	Mass 51,4+0,2... war 51,3+0,2...;	DIM. 51,4+0,2... WAS 51,3+0,2...;			
	E3	Mass 26,2+0,2 war 26,2;	DIM. 26,2+0,2 WAS 26,2;			
	C5	Mass 77,8+0,2 war 77,5+0,2;	DIM. 77,8+0,2 WAS 77,5+0,2;			
		Neueinfuehrung 5/21/84: neu eingef..	INTRODUCTION 5/21/84: NEW INTRODUCED			
		Aenderungs-Nr. 5-2500: Zeichnung bildlich berichtigt.	REVISION-NO. 5-2500: DRAWING AMENDED			
		Aenderungs-Nr. 328211: Text zugef.	REVISION-NO. 328211: TEXT ADDED.	24. 10. 03	Baetzner	
05532204		Aenderungsantrag SC-01.422:	ENGINEERING CHANGE REQ. SC-01.422:			
		Werkstoff war ABS Mischpolymerisat	MATERIAL WAS ABS Mischpolymerisat			
		schwarz	BLACK	26. 01. 05	Pistikos	
05532253		Aenderungsantrag SC-01.531:	ENGIN. CHANGE REQUEST SC-01.531:			
		Anpassung an Erstmusterpruefbericht	ADAPTED AT FIRST SAMPLE TEST REPORT	29. 08. 05	Eslinger	

RAHMEN 594.801
FRAMEWORK 594.801



RAHMEN 594.802 UND RAHMEN 594.801
KÖNNEN NACH BEDARF ZUSAMMEN GESTECKT WERDEN
WORKFRAME 594.802 AND WORKFRAME 594.801
CAN BE PLUGGED TOGETHER AS REQUIRED

LAGERFÄHIGKEIT: -40°C bis +80°C
4h bei +85°C
SHELF-LIFE: -40°C TO +80°C
4h AT +85°C

F08	29. 01. 85	E1	5-2500
F06	01. 10. 84	E1	5/21/84
Freigabe-St. Release-level	Datum Date	genehmigt approved	Referenz Reference
bez. S-Nr. for part-No 594.801			
F08	29. 01. 85	E1	5-2500
F06	01. 10. 84	E1	5/21/84
Freigabe-St. Release-level	Datum Date	genehmigt approved	Referenz Reference
bez. S-Nr. for part-No 594.802			

Nicht tol. Masse	Nom. dim.	... 6	>6... 30	>30... 120	>120... 400	>400... 1000
Zul. Abw.	Gen. tolerances ±	0.5	0.5	1		
Nennmass (kurzer Schenkel)	Ref. side		... 10	>10... 50	>50... 100	>100
Nicht tol. Winkel zul. Abw.	Gen. angle tolerance	±				
Werkstoff - Qual.-Nr n.						■ Lustran ABS H 802
Material spec. no to						

Alle Masse in mm All dimensions in mm		Kurz-Benennung Title		Art-Nr. Cat.	
Measstab Scale		RAHMEN FRAME		4023	
SC*CC Werte		UA Zeichnungs-Nr Drawing no.		Blatt Sheet	
SC*CC Values		A 594.802		1	
Beerb. Drawn		24. 10. 03 Baetzner		Ers.f. Sub. for A 594.802	
Gepr. Checked		31. 10. 03 Baetzner		Stuttgarter Str. 119 D-74321 Bietigheim	
Tech. Tech. checked				Ers.d. Sub. by	