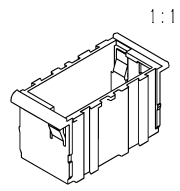
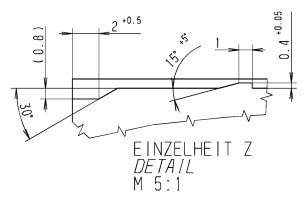
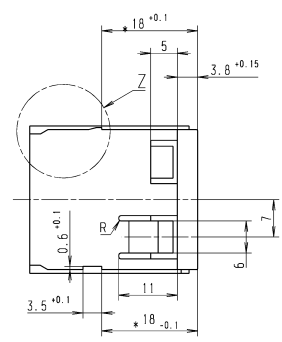
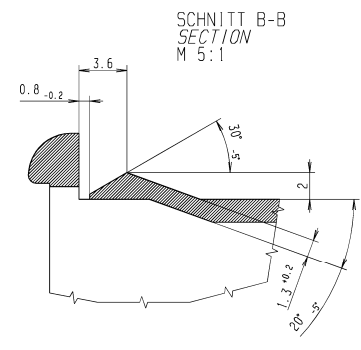
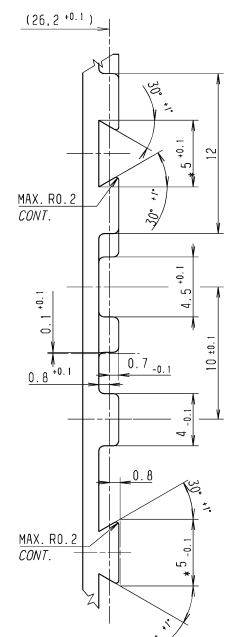
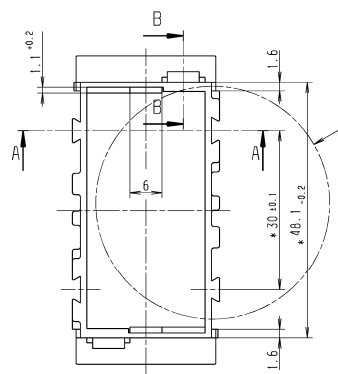
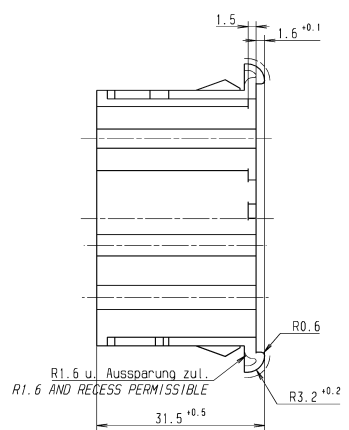
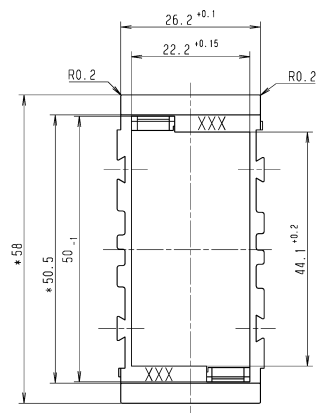
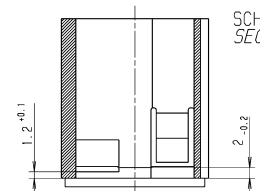
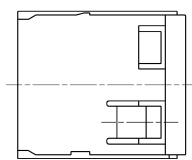


Benüsterung und Freigabe
nach SWF 20.100
Sampling and Release
to SWF 20.100

Än.-Nr. Rev. no.	Feld Zone	Art der Änderung	Revision	Tag Date	Name Name	M M
03532268		neu gezeichnet, Format E war D; Text verschoben;	NEW DRAWN; FORMAT E WAS D; TEXT SHIFTED;			
	D6	Neueinführung 5/21/84: neu eingef. Änderungs-Nr. 5-2500: Mass 31,5±0,5 war 26,5±0,1; +18-0,1 war +26,5±0,1; Mass 1,5 zugef.; +3,1±-0,05; 0,4-0,1 und 0,5±0,1 entfernt;	INTRODUCTION 5/21/84: NEW INTRODUCED REVISION-NO. 5-2500: DIM. 31.5±0.5 WAS 26.5±0.1; +18-0.1 WAS +26.5±0.1; DIM. 1.5 ADDED; +3.1±-0.05; 0.4-0.1 AND 0.5±0.1 DELETED;			
	C6	Mass +18-0,1 war +26,5-0,1; Einzelheit Z: Mass 3,5±0,1 war 2,5± 0,1; Winkel 15 Grad +5 Grad war 20 Grad+5Grad; 1 war 0,5; 2±0,5 war 1; Mass 10,8 zugef.;	DIM. +18-0.1 WAS +26.5-0.1; DETAIL Z: DIM. 3.5±0.1 WAS 2.5±0.1; ANGLE 15DEGREE+5DEGREE WAS 20DEGREE +5DEGREE; 1 WAS 0.5; 2±0.5 WAS 1; DIM. 10.8 ADDED;			
	A4	Einzelheit Y: Mass 0,8±0,1 war 1±0,1 0,7-0,1 war 0,9-0,1; 12 war 8; 0,8 war 1; Mass 10±-0,1; 4,5±0,1; 4-0,1 zugef.;	DETAIL Y: DIM. 0.8±0.1 WAS 1±0.1; 0.7-0.1 WAS 0.9-0.1; 12 WAS 8; 0.8 WAS 1; DIM. 10±-0.1; 4.5±0.1; 4-0.1 ADDED;			
		Text: nicht bemaste Radien R0,4 zugefügt;	TEXT: RADII EXCEPT AS STATED R0.4 ADDED;	17.10.03	Baetzner	
	05532204	Änderungseintrag SC-01.422: Werkstoff war ABS Mischpolymerisat schwarz (Novodur PT)	ENGINEERING CHANGE REQ. SC-01.422: MATERIAL WAS ABS Mischpolymerisat BLACK (Novodur PT)			
	05532253	Änderungseintrag SC-01.532: Anpassung an Erstatenprüfbericht: Mass R0,6 entfernt und Mass 6 war 6,5	ENGIN. CHANGE REQUEST SC-01.531: ADAPTED AT FIRST SAMPLE TEST REPORT: DIM. R0.6 OMIT AND DIM. 6 WAS 6.5			
E/10						
E/6				29.08.05	Eslinger	



FLÄCHE MATT
STRUKTUR NACH VDI 3400 NR. 30-33
SURFACE MATT
STRUCTURE AFTER VDI 3400 NO. 30-33

HERSTELLERZEICHEN; NEST- UND TEILENUMMER
0,1 VERTIEFT WAHLWEISE 0,1 VERTIEFT
0,1 ERHAGEN ANGEBRÄCHT

MANUFACTURER CHARACTER, NEST- AND PART NUMBER
0,1 RECESSED OPTIONAL 0,1 RECESSED
0,1 RAISED ATTACHED

MUSS ZU RAHMEN 594.802 AUF UMSCHLAG
SPIELFREI EINRÄSTEN
IM SICHTBEREICH KEIN VERSATZ ZULAESSIG
MUST ENGAGE TO FRAMEWORK 594.802 ON ENVELOPE
FREE FROM PLAY.
IN THE RANGE OF VISION NO DISALIGNMENT
PERMISSIBLE.

MAX. AUSHEBESCHRAEGE 30°
MAX. DRAFT ANGLE 30°

GEWICHT CA. 5G
WEIGHT APPROX. 5G

NICHT BEMASTE WANDDICKE 1,2
WALL THICKNESS EXCEPT AS STATED 1.2

NICHT BEMASTE RADII R0,4
RADII EXCEPT AS STATED R0.4

FOR	27.02.85	E1	5-2500
FOR	01.10.84	E1	5/21/84
Freigebe-St. Release-level	Datum Date	genehmigt approved	Referenz Reference
bez. S-Nr. for part-Nr. 694.801			

Nicht tol. Masse	Nom. dim.	...6	>6...30	>30...120	>120...400	>400...1000
Zul. Abw.	Gen. Tolerances +	0.1	0.15	0.2	0.2	0.2
Nicht tol. Winkel zul. Abw.	Gen. angle tolerance ±	2'	>10...50	>50...100	>100	>100
Werkstoff - Quel.-Nr n.		Lustran ABS H 802				
Material spec. no to						
Alle Masse in mm		All dimensions in mm		Kurz-Bezeichnung		Titel
Massestab		Scale		RAHMEN		Art.-Nr. Cat.
2:1		2:1		FRAME		4023
594.801				Blatt/Sheet		von/of
594.801				1		Format
594.801				E		

Beord. Drawn Tag Date Name Name
Gen. Checked 14.10.03 Baetzner
Tech. Tech. checked 22.10.03 Baetzner

Valeo Auto-Electric GmbH & Co. KG
Stuttgarter Str. 119 D-74321 Bietigheim
Ers. f. Sub. for 594.801
Ers. d. Sub. by

computerdrawing plotted on AUGUST 31, 2005 10:05