



INSTRUCTION MANUAL

Data Viewer Program

DVP-100

For data export of battery test results to PC

Contents

Chapter 1: Installation.....	3
Install IR receiver	3
Install program	3
Chapter 2: On first use.....	4
Customer details.....	4
Select COM port.....	4
Chapter 3: Settings and configuration.....	5
Language settings	5
COM port settings.....	5
Company details setup.....	5
Chapter 4: Menu options	7
Menu options	7
Chapter 5: Receiving test data.....	8
Process to receive data from the tester	8
Chapter 6: Compatibility.....	11
Menu options	11
Chapter 7: FAQ	12

Chapter 1: Installation

Install IR receiver

Serial IR Receiver (P/N 301-035)

Connect the Infrared (IR) receiver to a free COM port of the computer.

USB IR Receiver (P/N 301-090)

Connect the Infrared (IR) USB receiver to a free USB port of the computer.

Connecting the USB receiver to a USB-hub is possible but not advised.

Note: *When using a USB IR receiver, it may be required to install the USB receiver driver to allow the operating system to recognize the receiver as a "USB-to-Serial" device. The driver software can be found on the installation disk of the DVP program.*

Install program

Insert the installation disk in the computer. The installation wizard will appear automatically. Follow the steps of the installation wizard to successfully finish installation of the program.

If the installation wizard does not start automatically, select the DVP setup file on the installation disk manually.

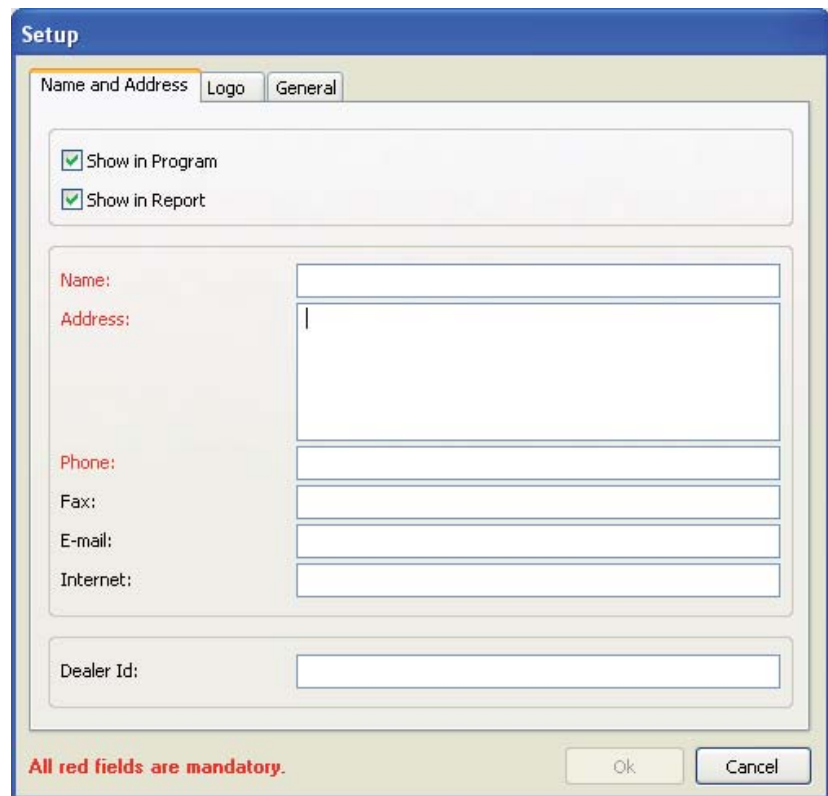
Note: *In case of re-installation of the DVP program or installation of a newer version, it is advised to completely remove the old DVP program from the computer prior to reinstallation of the program.*

Chapter 2: On first use

Customer details

Make sure the IR receiver is connected and open the DVP program.

When opening the DVP program the first time, the program will request to fill out customer mandatory data. Fill out your company or personal details and click "OK".

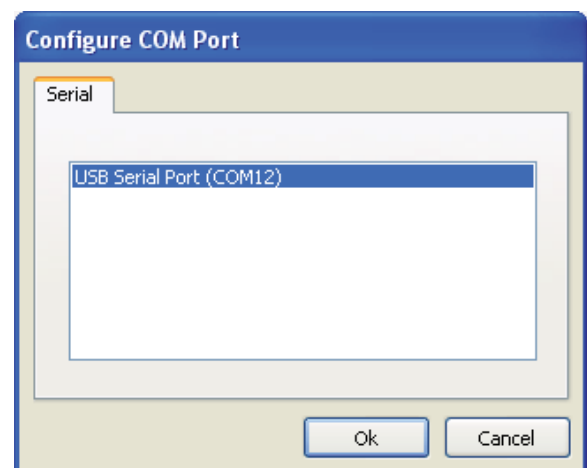


The screenshot shows the 'Setup' dialog box with the 'Name and Address' tab selected. The 'Logo' and 'General' tabs are also visible. The 'Name and Address' section contains two checked options: 'Show in Program' and 'Show in Report'. Below this are input fields for 'Name:', 'Address:', 'Phone:', 'Fax:', 'E-mail:', and 'Internet:'. The 'Address' field is the largest. At the bottom, there is a 'Dealer Id:' field. A red note at the bottom left states 'All red fields are mandatory.' The 'Ok' and 'Cancel' buttons are at the bottom right.

Select COM port

On start up, the program will automatically scan the COM ports in use and will show the possible COM ports for selection.

Select the COM port which is connected to your IR receiver. When you are using a USB IR receiver, the receiver should appear as a "USB Serial Port" or "USB-to-Serial" device. A virtual COM port will be addressed to the USB receiver.



The screenshot shows the 'Configure COM Port' dialog box with the 'Serial' tab selected. A list box contains the entry 'USB Serial Port (COM12)'. The 'Ok' and 'Cancel' buttons are at the bottom right.

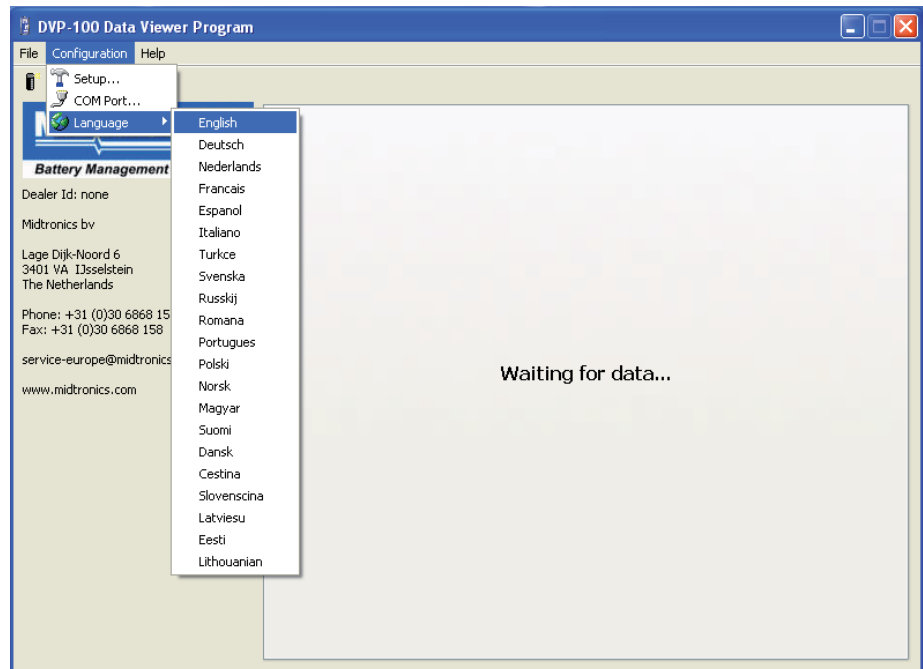
Chapter 3: Settings and configuration

Language settings

To change the language of the DVP program, select "Configuration" -> "Language".

Select the preferred language.

Note: Changing the language when received data is displayed, the language change will not affect the field headers. Transmit the data again or restart the DVP program after changing the language to apply the language setting to all fields in the program.



COM port settings

To change the COM port settings of the DVP program, select "Configuration" -> "COM Port".

Note: In case the program does not respond to send data after changing the COM port settings, close and re-open the program.

Company details setup

The program enables displaying and printing personal company details and logo's on the test report.

Company details

Select "Configuration" -> "Setup" -> "Name and Address" to add/modify you company or personal details.

Visibility of your company details in the program and/or on the printed report can be enabled or disabled by selecting "Show in program" and "Show in report"

Company logo

Select "Configuration" -> "Setup" -> "Logo" to add and remove you personal company logo to the program.

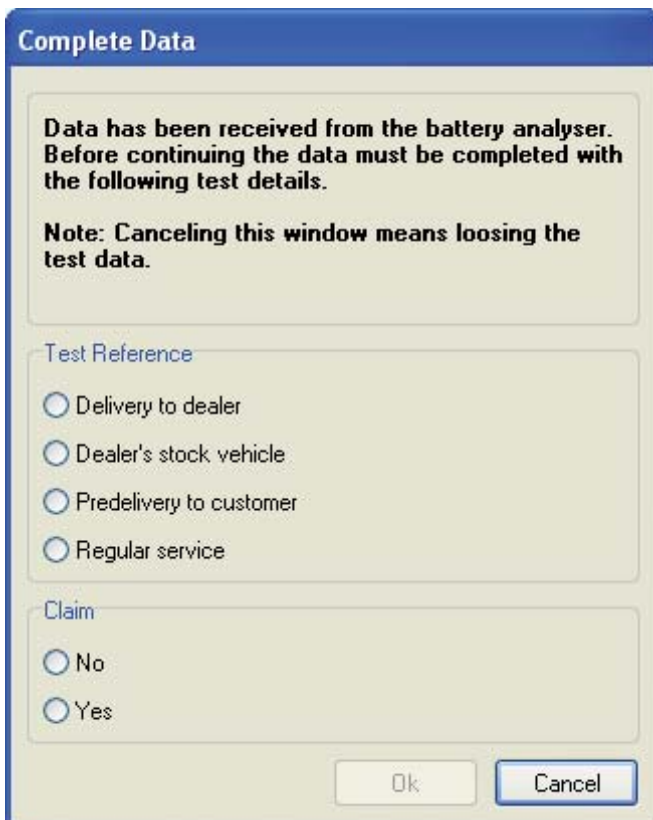
Visibility of your company logo in the program and/or on the printed report can be enabled or disabled by selecting "Show in program" and "Show in report"

Note: Only files with the extension .BMP can be used as a logo.

Additional battery test information

Select "Configuration" -> "Setup" -> "General" to enable or disable the pop-up of the additional information screen after transmission of the battery test data.

The additional information will become visible in the data report.



Chapter 4: Menu options

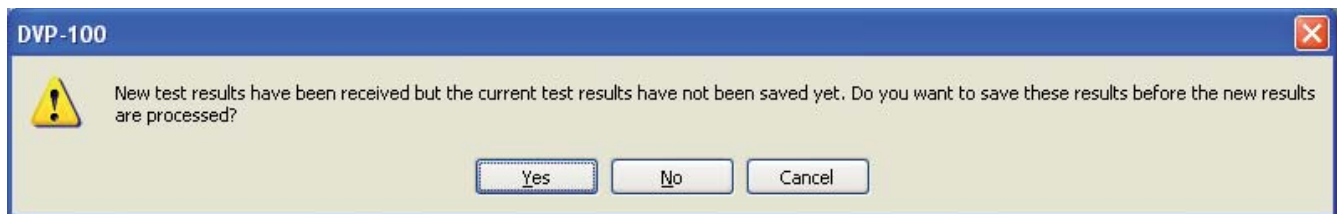
Menu options

The DVP program includes the following menu options:

New

Click on "New" to receive new data when received data is already displayed on the screen. The DVP program will show "Waiting for data.."

Note: When new data is received with old data still displayed and not saved, the program will automatically load the new received data. Unsaved data will be prompted to be saved.



Open

Open, modify and print previously stored test results.

Save

Save the received and manually added battery test data to a location of your preference. Stored test result can be reopened at any time by the DVP program.

Print

Print the results to a regular printer connected in the available computer network or local.

Note: The DVP program will automatically print on the printer which is set as "Default" on your computer.

Statistics

Depending on the ability of the battery tester used, the statistics of the battery tester are being transferred together with the battery test results.

The DVP program will allow to view battery tests statistics by tester model and serial number for management purposes.

Chapter 5: Receiving test data

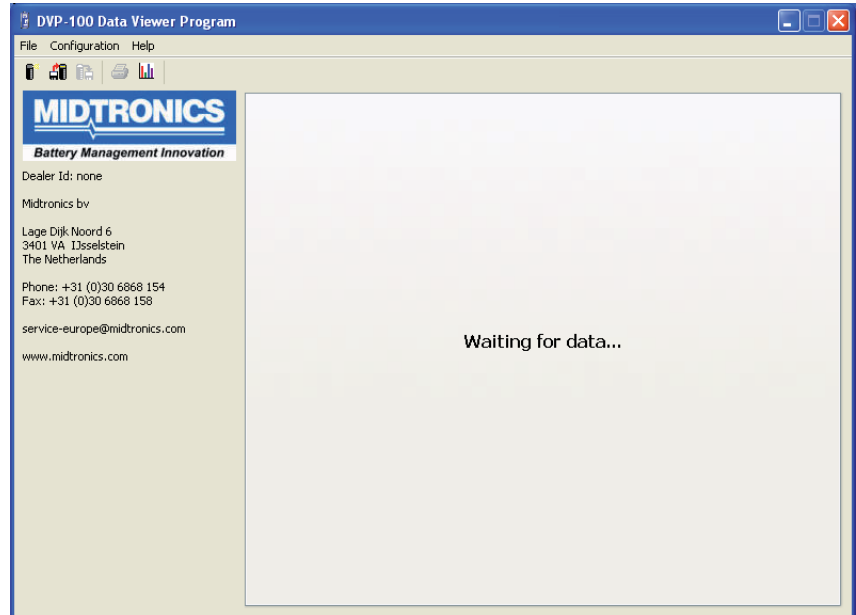
Process to receive data from the tester

Waiting for data

The DVP program is stand-by to receive data for as long as the text "Waiting for data..." is displayed.

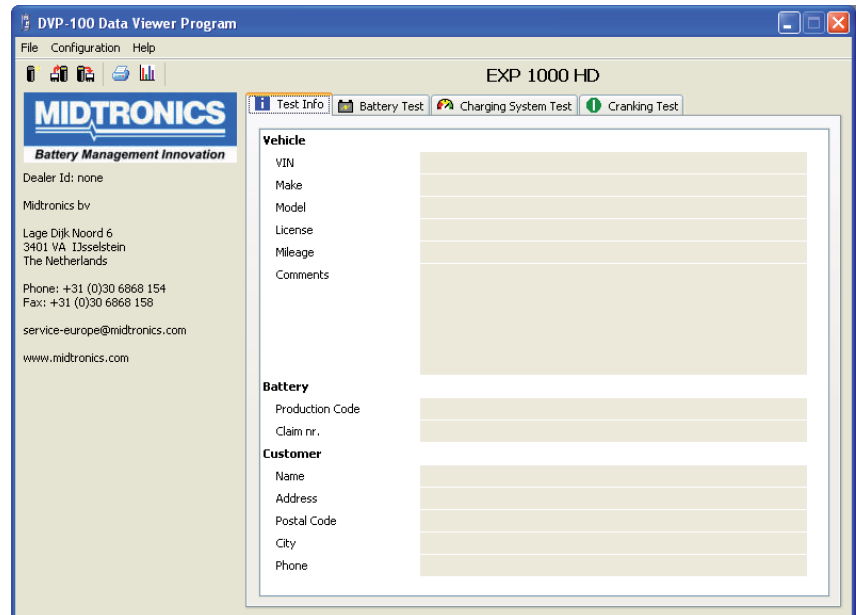
Transfer data

Aim the IR transmitter to the IR receiver and select "Export data" in your battery tester. Keep the tester aimed to the IR receiver until the screen changes and the data is fully received.



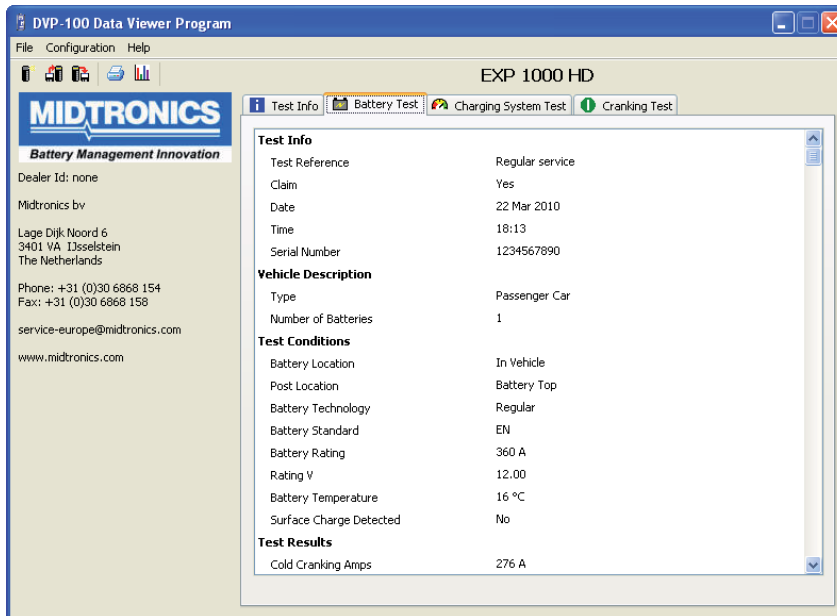
General vehicle information

The first tab allows to register all vehicle specific information. This information will be added to the report when printed.



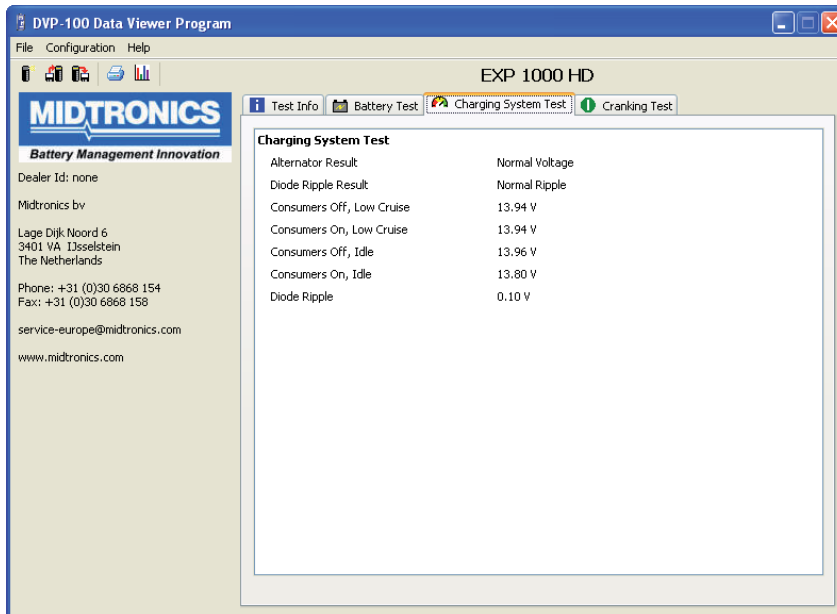
Battery test

The second tab will show all details of the battery test performed.



Alternator test (only when full system test is performed)

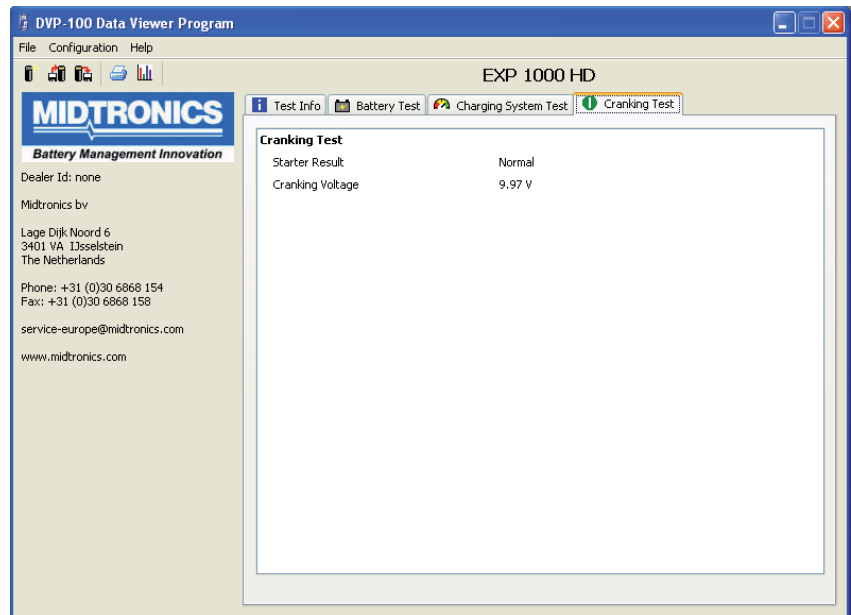
When a full system test is performed, the result of the alternator test is reported separately on the third tab.



Cranking test (only when full system test is performed)

When a full system test is performed, the result of the cranking test is reported separately on the fourth tab

Note: Check the manual of the battery tester for any details regarding the use of the "Export Data" menu.



Chapter 6: Compatibility

Menu options

Compatibility between battery tester and DVP program could be limited to single or few models. To check the compatibility of the DVP program and battery tester, select "Help" -> "About" and check if the battery tester is registered in the list of testers for this DVP program.

Battery testers which are not registered in the list of battery testers in the DVP program will not be compatible with that DVP program. The DVP program will not be able to receive data from tester no defined in the tester list.



Chapter 7: FAQ

I exported the data but the program keeps showing “Waiting for data...”

Tester and receiver not aligned

Make sure the IR transmitter of the tester and the IR receiver are aligned when exporting the data.

Incorrect COM-port

Check to which COM-port the IR receiver is connected. Make sure the matching COM-port is selected in the DVP program.

When you are using an USB-device, check to which COM-port the receiver is addressed by the PC. (Configuration / System / Hardware / Device Manager)

COM-port not working

Make sure the COM-port is working. Try another COM-port or another PC.

DVP corrupted

Re-install the software and retry.

IR receiver not working

Replace the IR receiver and retry.

Internal batteries of the tester low

When the batteries in the tester are running low, the IR signal could become weaker. Check the condition of the internal batteries in the tester and replace when necessary.

I exported the data but the error “The received data could not be matched to a know tester” appears

Print data / Export data

To export the data to the DVP program, the menu option “Export Data” is required.

When the “Print” option is used, no data will be received.

Incorrect DVP

Check if the DVP program is compatible with the tester.

Open the DVP program and select “Help” -> “About” to check if the tester is in the list.

Use the correct DVP for the tester type.



I did NOT export any data to the program but the program suddenly is showing “The received data could not be matched to a know tester” error message

Noise signals

IR receivers can be sensitive for external signals other than the signal from the tester. Make sure the IR receiver is isolated from any other IR signals.

I have connected a USB receiver, but it does not appear in my COM port settings

USB driver

Make sure you have installed the driver for the USB IR receiver. Normally the driver is available on the installation disk of the DVP program. If you do not have the driver software, please contact Midtronics (service-europe@midtronics.com).

I have a serial receiver but my new computer does not have a serial port anymore. What can I do?

USB receiver

USB IR receivers are available. Contact Midtronics or your local distributor for purchase options of the USB IR receiver.

USB-to-Serial converter

Use a USB-Serial converter to connect the serial receiver to a COM port.

Note: Not all universal USB-Serial converters work properly!

My computer already has an integrated IR eye. Does this operate as well?

Probably not. Integrated IR receivers do not operate with the DVP program as it does not address a COM port to the receiver.

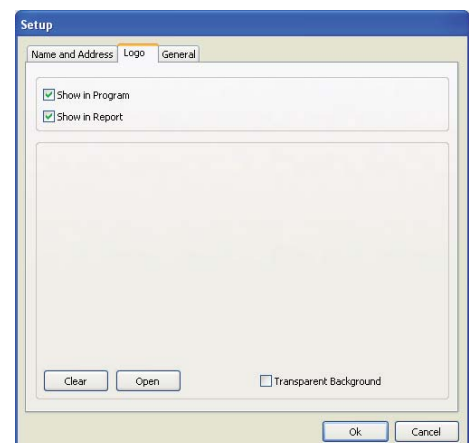
The program does not select or show my logo

Incorrect logo format

Make sure the required logo is in .BMP format.

Logo is disabled in setup menu

Make sure the logo settings are enabled to show the logo on the screen and the printed report.



The original DVP installation disk is lost or broken. How do I obtain a new disk?

Please contact Midtronics (service-europe@midtronics.com).

Can I export multiple test at once or export previous tests stored on my SD card?

No. Only the last test is available for data export. Previous tests stored on the SD card cannot be recalled in the tester.

**My tester is not in the list of testers that match the DVP version I have.
How do I make the DVP work with my tester?**

Please contact Midtronics (service-europe@midtronics.com).