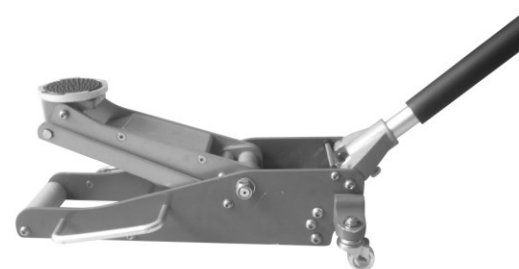




2 Ton Aluminium Jack



Model No: K 10230



Thank you for purchasing this Kamasa Tools 2 Ton Aluminium Jack.
Before attempting to use the unit, please read this instruction booklet carefully.

1. Operation Instructions

1-1. To Raise Jack

- Turn the handle clockwise until release valve closes.
- Place jack directly under the vehicle, to be lifted so that saddle takes up weight firmly and centrally.
- Raise jack to required height
- After lifting, use jack-stands to hold load for any time of length
- When not in use, always keep the jack in download position

1-2. To lower Jack

- Slowly turn the handle counter clockwise. The speed of lowering is controlled by the amount valve is opened.

1-3. Security operation

- We recommend that the wheels of the vehicle to be chocked
- The jack should be positioned under proper lift points. Please consult the vehicles instruction manual, since these points may vary with each vehicle.
- Do not operate your jack with passengers in vehicle or leaning against it.
- Do not operate your jack on soft or uneven surface
- Do not exceed the jack rated lifting capacity

2. Maintenance Procedures

When adding or replacing oil, always use good grade hydraulic oil. Avoid mixing types of oil. Improper oil can cause serious internal damage to the jack.

2-1. Replacing oil

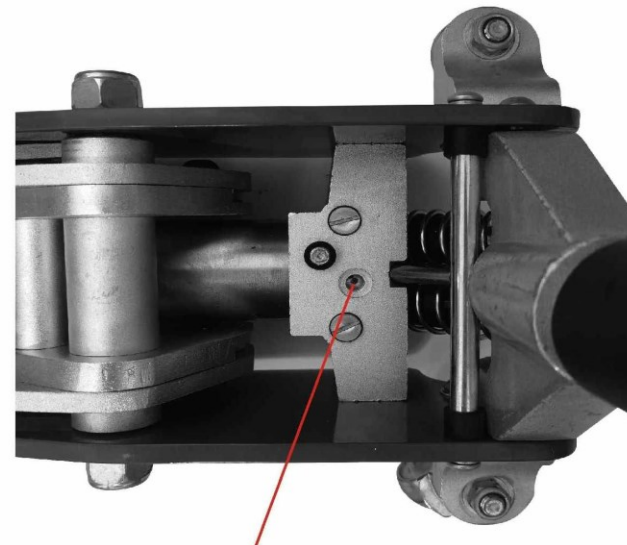
For better performance and longlife, replace oil supply once a year.

2-2. Lubrication

Add lubrication oil to all moving parts every 3 months.

2-3. Adding oil

With saddle fully lowered and jack on level ground, remove cover plate, then remove air vent valve. Oil should be approx. 6mm below valve hole. If low, add oil as needed, then close air vent valve and replace cover plate.



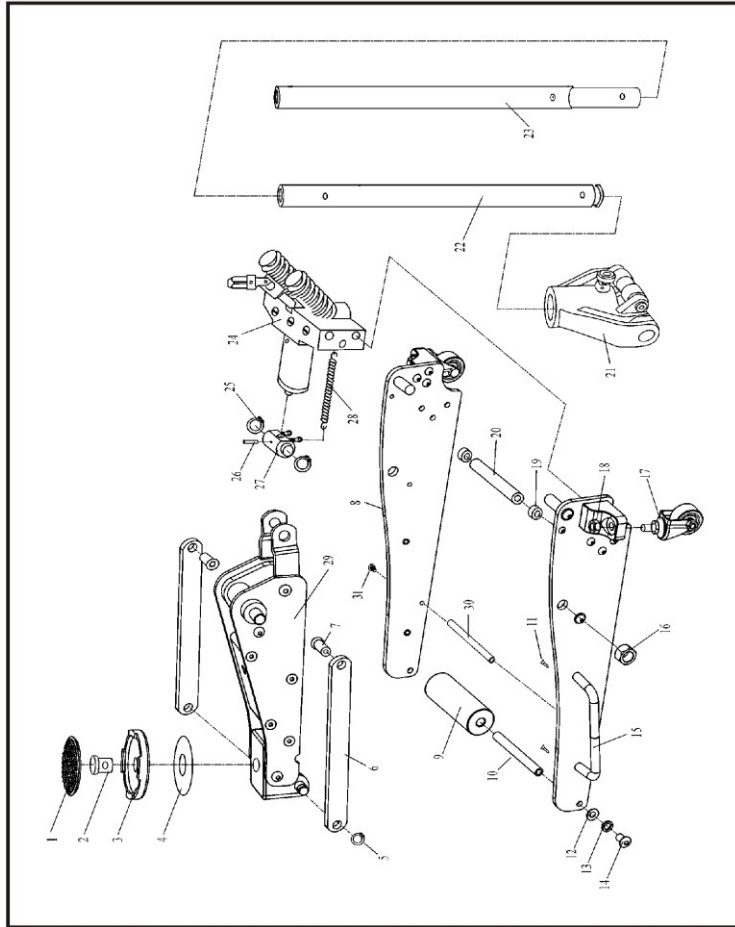
valve for refilling oil

Kindy reminder:

* The filling hole is a bit narrow, please slow down when refilling.

* Hydraulic oil suggestion: N15

3. Exploded Drawing



3

4. Part List

POS	Description	PCS
1	RUBBER SADDLE PAD	1
2	SADDLE AXIS	1
3	SADDLE	1
4	SADDLE WASHER	1
5	"C" RING NO.15	2
6	LINK ROD	2
7	LINK ROD AXIS	2
8	SIDE PLATE	2
9	FRONT CASTER WHEEL	1
10	BOLT	1
11	BOLT M8x20	4
12	WASHER Φ10	2
13	LINKAGE WASHER Φ10	2
14	BOLT M10x30	2
15	HANDLE BAR	2
16	NYLON LOCK M18	2
17	REAR WHEEL	2
18	NYLON LOCK M12	2
19	RUBBER RING	2
20	HANDLE AXIS	1
21	HANDLE ASSEMBLY	1
22	HANDLE ,LOWER	1
23	HANDLE ,UPPER	1
24	POWER UNIT ASSY	1
25	"C" RING NO.19	1
26	SPRING PIN Φ4x30	1
27	PISTON ROD AXIS	1
28	SPRING	2
29	RAISE ARMS	1
30	MINIMUM POLE POSITION	1
31	BOLT M8x20	2

4

5. Troubleshooting

Trouble	Possible cause	Amendment
Will not lift load at all	<ol style="list-style-type: none"> 1. Release valve not closed 2. Power unit not functioning 3. Air in hydraulic system 	<ol style="list-style-type: none"> 1. Turn release valve with handle clockwise tightly. 2. Change the power unit. 3. Open release valve and air vent valve, then pump handle several times.
Will lift load only part way	<ol style="list-style-type: none"> 1. Oil level low 2. The jack could be air blocked 3. The reservoir could be overfilled 	<ol style="list-style-type: none"> 1. Fill to prescribed level 2. Open the release valve and the air vent valve. Pump handle a couple of times full stroke and close the release valve 3. The reservoir could be over filled
Will lift load, but will not hold	<ol style="list-style-type: none"> 1. Release valve not closed tightly 2. Packing or power unit worn out or defective 	<ol style="list-style-type: none"> 1. Turn release valve with handle clockwise tightly 2. Change the power unit
Jack will not lower	<ol style="list-style-type: none"> 1. Return spring loose or broken 2. Unit needs lubrication 3. The jack could be air blocked 	<ol style="list-style-type: none"> 1. Check and replace 2. Oil external moving parts 3. Open the release valve and the air vent valve. Pump handle a couple of times full stroke and close the release valve.
Poor lifting	<ol style="list-style-type: none"> 1. Defective pump packing or valves not functioning 2. Dirty oil 3. Air in hydraulic system 	<ol style="list-style-type: none"> 1. Change the power unit 2. Change hydraulic oil 3. Purge air from system

6. Specifications

- Max Load: 2 Ton
- Min Height: 90 mm
- Max Height: 450 mm
- Weight: 19.2 Kg