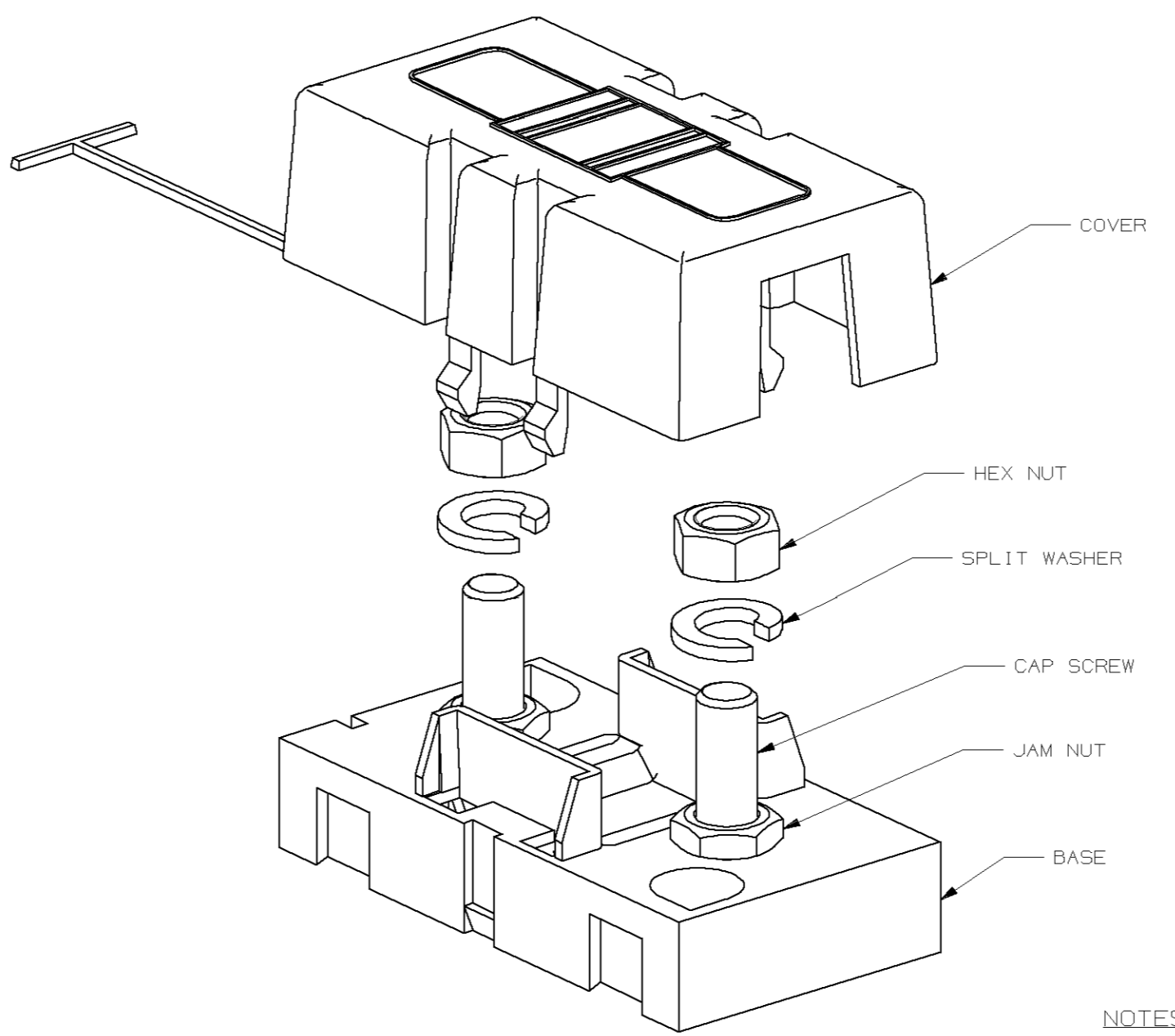
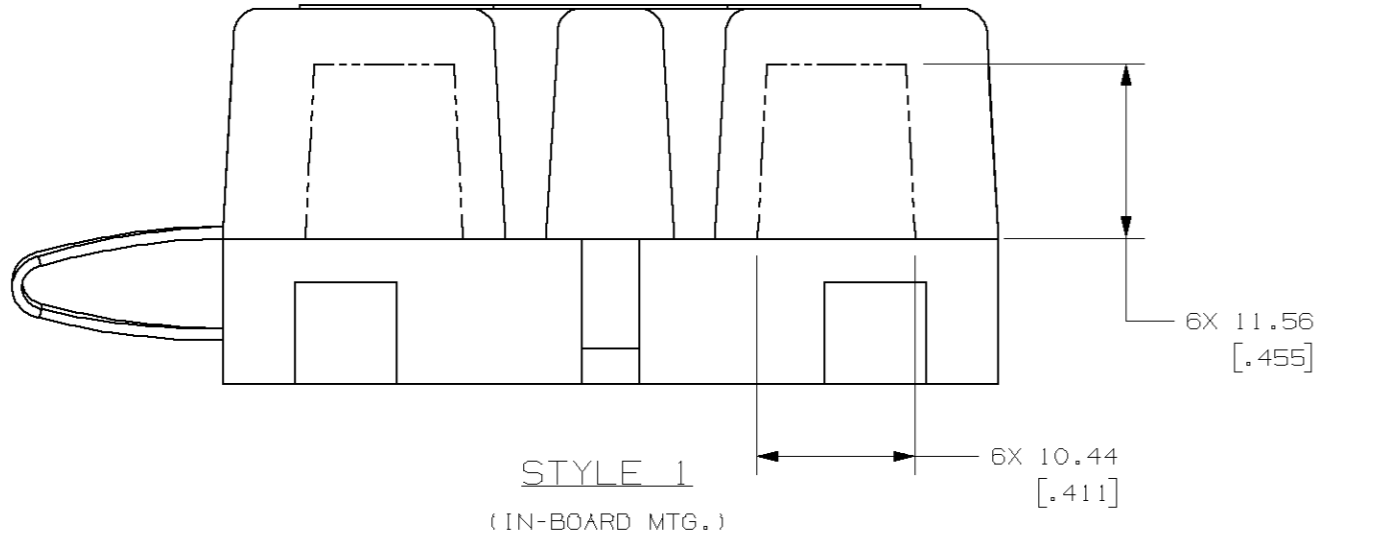
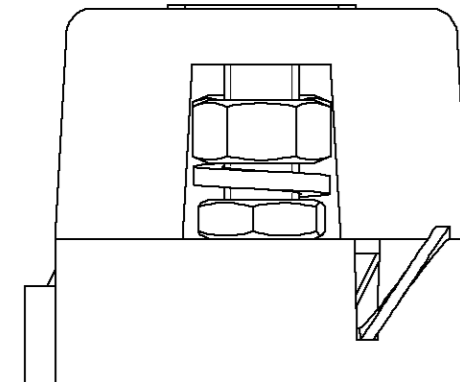
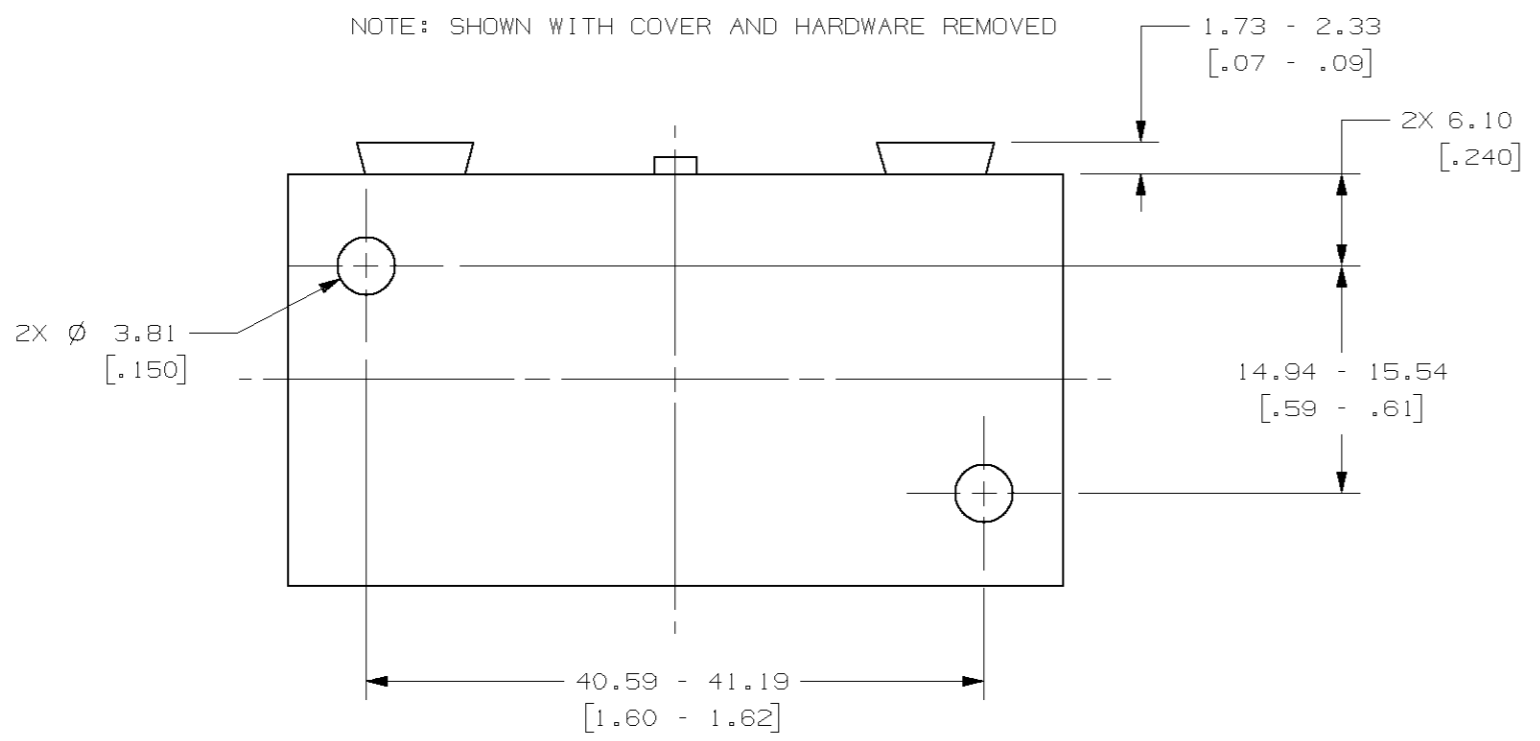


PART NUMBER	COVER OPENING	DIMENSION "A"	FUSE	FUSE QTY/1000	SPLIT WASHER	SPLIT WASHER QTY/1000	HEX NUT	HEX NUT QTY/M	RACHET FASTENER	RACHET FASTENER QTY/1000	STYLE
04980900ZXT	A D	10.44 [.411]	NO	N/A	YES	2000	YES	2000	NO	N/A	1
04980902ZXT	A D	10.44 [.411]	NO	N/A	NO	N/A	YES	2000	NO	N/A	1
04980903ZXT	A D	10.44 [.411]	NO	N/A	YES	2000	YES	2000	NO	N/A	2
04980904ZXT	A D	10.44 [.411]	NO	N/A	YES	2000	YES	4090	NO	N/A	1
04980905ZXT	A C E	10.44 [.411]	NO	N/A	YES	2000	YES	2000	NO	N/A	1
04980906ZXT	A E	10.44 [.411]	NO	N/A	YES	2000	YES	2000	NO	N/A	1
04980907ZXT	A C	10.44 [.411]	NO	N/A	YES	2000	YES	2000	NO	N/A	1
04980908ZXT	E F	N/A	NO	N/A	NO	N/A	NO	N/A	NO	N/A	2
04980909ZXT	E F	N/A	100A	1000	YES	2000	YES	2000	YES	2000	2
04980910ZXT	E F	N/A	NO	N/A	YES	2000	YES	2000	NO	NO	1
04980911ZXT	E F	N/A	50A	1000	YES	2000	YES	2000	YES	2000	2
04980912ZXT	A E F	10.44 [.411]	NO	N/A	YES	2000	YES	2000	NO	N/A	1
04980913ZXT	A D	15.47 [.609]	NO	N/A	NO	N/A	NO	N/A	YES	2000	2
04980914ZXT	A D	15.47 [.609]	40A	1000	YES	2000	YES	2000	YES	2000	2
04980915ZXT	E F	N/A	NO	N/A	YES	2000	YES	2000	NO	N/A	2

*FOR ADDITIONAL INFORMATION SEE INDIVIDUAL DRAWINGS

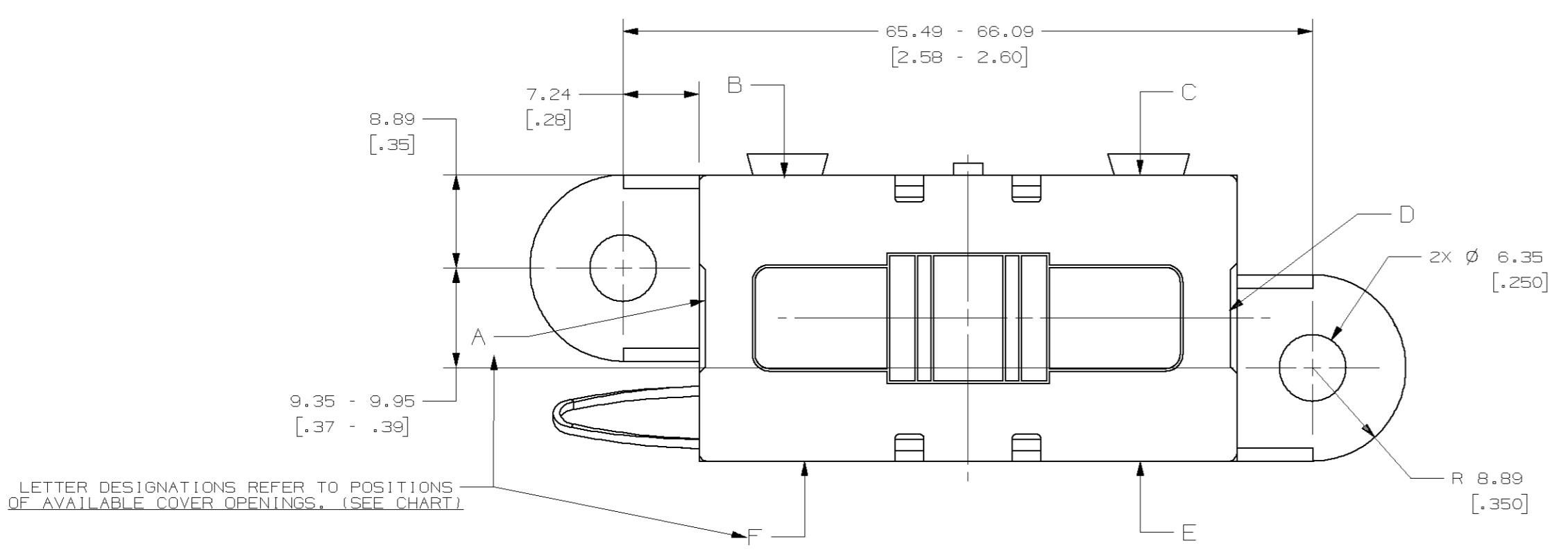
LTR	DATE	REVISION	CHK	APD
A	05/25/05	61735 - RELEASE GLAB		
B	06/07/07	054900-FREDRMAN IN US & CONVERT TO METRIC. ADDED TOLERANCE TO DIMENSIONS, 7.24 WAS 18.191 GMB		

NOTE: SHOWN WITH COVER AND HARDWARE REMOVED

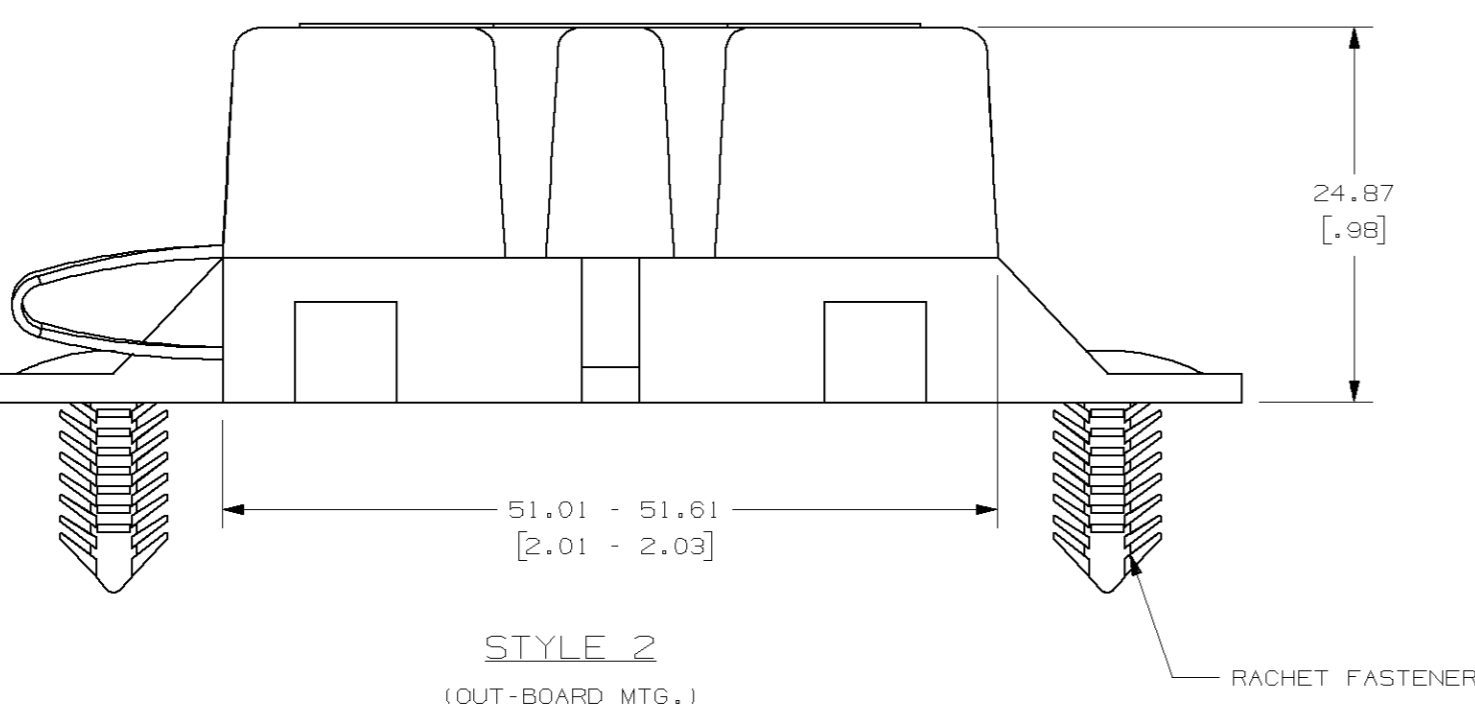
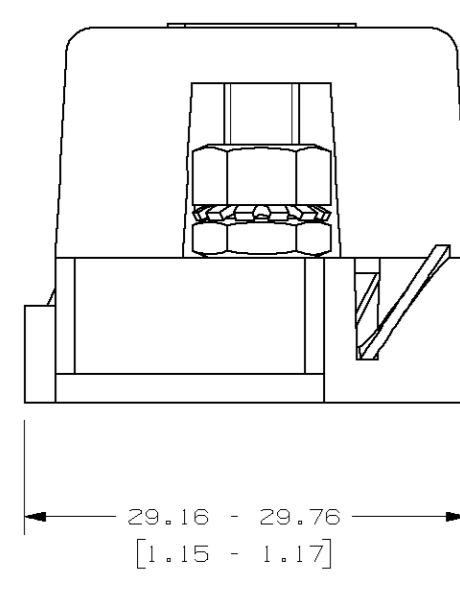
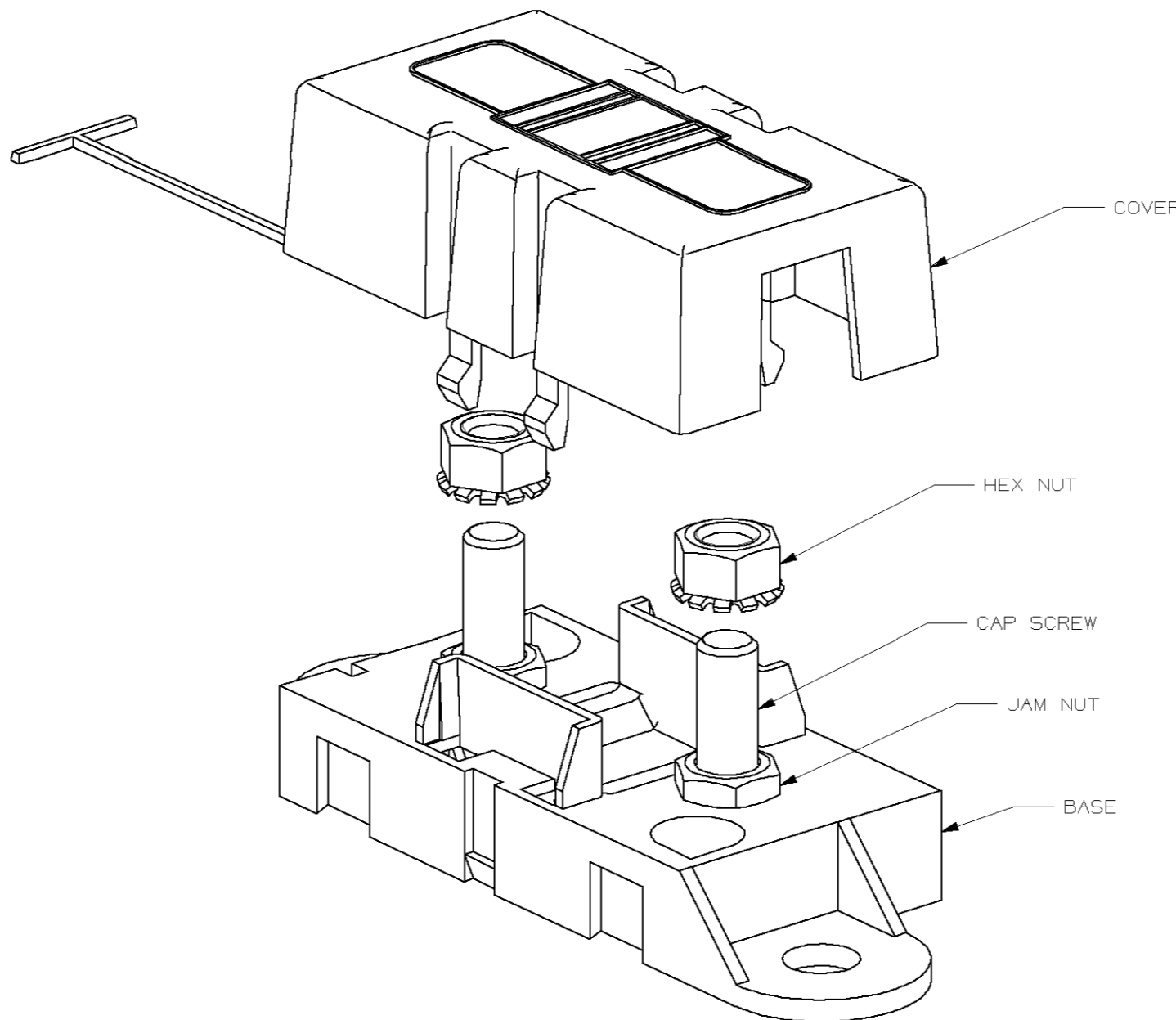


NOTES:

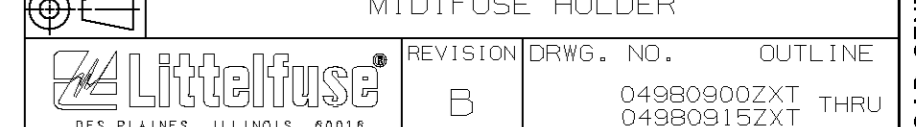
- MATERIAL:
 - * BODY-GLASS FILLED THERMOPLASTIC; COLOR-BLACK
 - * COVER-THERMOPLASTIC; COLOR-BLACK
 - * HARDWARE-M5 THREADED STUDS & NUTS AND STEEL LOCKWASHER WITH ZINC AND TRIVALENT CHROMATE, LEACHED AND SEALED, INTEGRAL TORQUE CONTROL LUBRICANT FINISH (MEETS ASTM STANDARD B-117, 96 HR. SALT SPRAY REQUIREMENT).
 - (04980902ZXT) * HARDWARE-M5 THREADED STUDS & NUTS WITH INTEGRAL LOCKWASHER WITH ZINC AND TRIVALENT CHROMATE, LEACHED AND SEALED, INTEGRAL TORQUE CONTROL LUBRICANT FINISH. (MEETS ASTM STANDARD B-117, 96 HR. SALT SPRAY REQUIREMENT).
- TORQUE REQUIRED FOR M5 FUSE TERMINAL & CONNECTOR LOCKING NUTS TO BE 4.0-5.0 NEWTON METERS (35-44 IN-LBS)
- HOLDER MEETS L/F VALIDATION TEST SPEC. VS-005004.



LETTER DESIGNATIONS REFER TO POSITIONS OF AVAILABLE COVER OPENINGS. (SEE CHART)



NO	COMPONENT NO	DESCRIPTION	QTY/M	U/M
BILL OF MATERIALS				
UNLESS OTHERWISE SPECIFIED, DIMENSIONS ARE IN MILLIMETERS. DIMENSIONS IN BRACKETS [] ARE INCHES.				
UNLESS OTHERWISE SPECIFIED, DIMENSIONS DO NOT INCLUDE PLATING.				
TOLERANCING TO BE INTERPRETED IN ACCORDANCE WITH ANSI Y14.5M-1994.				
⊙	DENOTES CRITICAL CHARACTERISTICS.			
CPK	DENOTES CPK DIMENSIONS. -MINIMUM CPK VALUE.			
(ST)	DENOTES A CHARACTERISTIC THAT PROVIDES AN INDICATION OF PROCESS PERFORMANCE. PROCEDURE FOR MEASUREMENT AND TRACKING TO BE DEFINED IN LITTELFUSE INSPECTION INSTRUCTIONS.			
CP	DENOTES CP DIMENSIONS. -MINIMUM CP VALUE MUST BE WITHIN THE DIMENSIONAL LIMITATIONS SHOWN ON DRAWING AND INITIALLY LOCATED TO ALLOW FOR MAXIMUM TOOL LIFE.			
MATL SPEC		FINISH		
DRW	GLAB	DATE	05/25/05	SCALE
				2:1
TOLERANCE UNLESS OTHERWISE SPECIFIED				
ONE PLACE DEC ±0.3 [.012]		THREE PLACE DEC ±0.050 [0.002]		ANGULAR ±1°
TWO PLACE DEC ±0.13 [.005]				
TITLE				
MIDIFUSE HOLDER				
DRW. NO.		REVISION		OUTLINE
		B		04980900ZXT THRU 04980915ZXT



CAD GENERATED DRAWING - NO PENCIL CHANGES ALLOWED