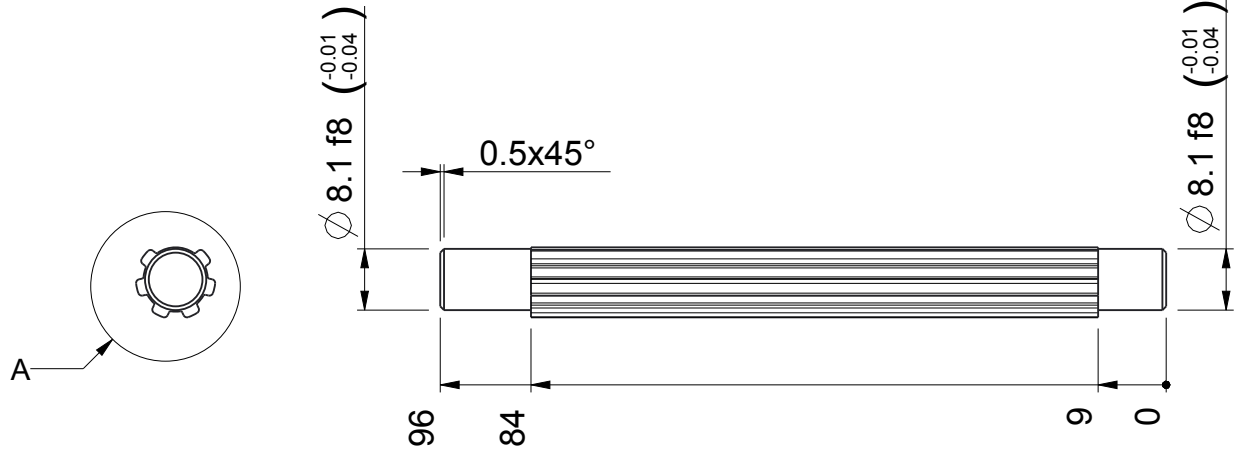
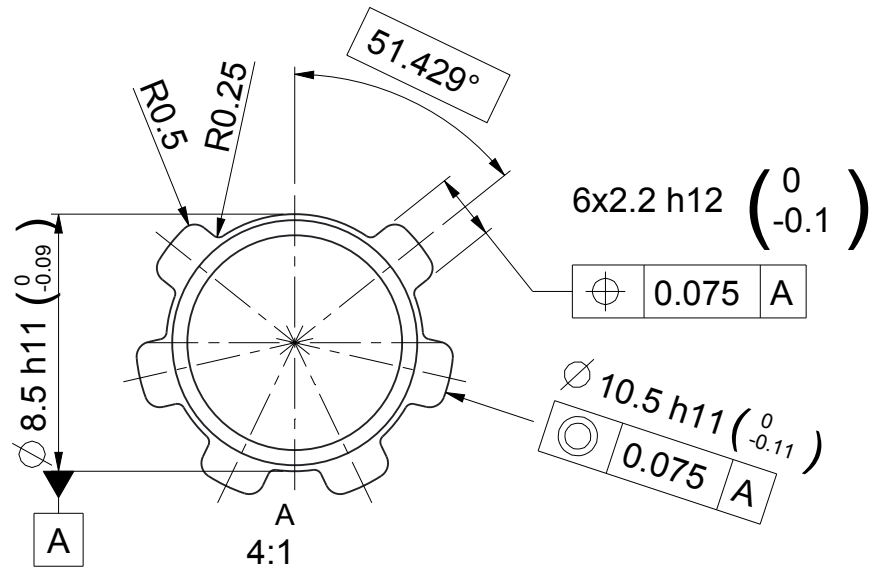


Rev:	Change Description:	Date:	Designer:

Approver:  
Date:  
Signature:



- Notes:
- Made of profile KRC 316928 AEIZ 01
  - Profile dimensions are for information only.
  - Remove all sharp edges



1:2

To be made from RoHS compliant materials:  
Complete object shall not contain more than:  
0.1% by weight in homogeneous materials for:  
lead, mercury, hexavalent chromium, polybrominated biphenyls (PBB), polybrominated diphenyl ethers (PBDE).  
0.01% by weight in homogeneous materials for cadmium.

2011/65/EU Exemption 6(a):  
Lead as an alloying element in steel for machining purposes  
and in galvanised steel containing up to 0,35 % lead by weight.

Part	Part # / Code	REV	Description	Information	Weight/Kg	Qty
		Descript: CU motor shaft Product: FlowOx 2.0			Weight: 0.049 Kg	
		Part # / Code: 4E02334 Original Designer: PetRan Orig. Des. Date: 09032018			Rev: A All dimensions are in millimeters unless otherwise specified	Material class: - Material: See Notes
Scale	General tolerance				Surface finish: -	
1:1	ISO 2768 - medium				Treatment: See Notes	
Sheet: 1/1					Color: -	
drawing	4E02334	A.1 - Draft		model	4E02334	A.1 - Draft