

FUSE STRIPS RATED 36V - SPECIAL PURPOSE FUSES

(NOT INTENDED FOR AUTOMOTIVE OR TRUCK APPLICATIONS)

RoHS

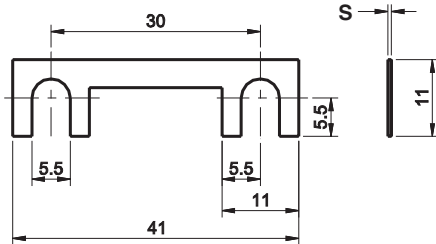


Description

Non-housed fuse strips for Diesel vehicles.
Current rating 25A - 150A, 36 VDC. 90° fork type lugs.

Dimensions

Dimensions in mm



Ratings

| Part Number | Current Rating A | Typ. Voltage Drop mV | Material Thickness "S" mm |
|---------------|------------------|----------------------|---------------------------|
| 156.5610.525_ | 25* | 70 | 0.20 |
| 156.5610.530_ | 30 | 70 | 0.25 |
| 156.5610.540_ | 40* | 70 | 0.20 |
| 156.5610.550_ | 50 | 70 | 0.25 |
| 156.5610.560_ | 60* | 70 | 0.40 |
| 156.5610.570_ | 70* | 70 | 0.45 |
| 156.5610.580_ | 80 | 70 | 0.50 |
| 156.5610.610_ | 100 | 70 | 0.70 |
| 156.5610.611_ | 120* | 70 | 0.70 |
| 156.5610.612_ | 125* | 70 | 0.70 |
| 156.5610.615_ | 150* | 70 | 1.00 |
| 156.5610.625_ | 250* | 70 | 2.00 |

Specifications

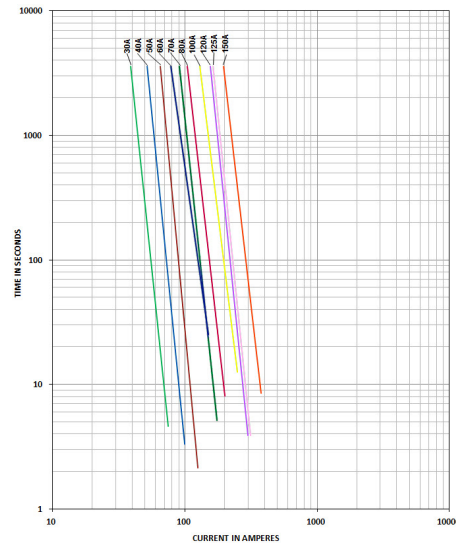
| | |
|------------------------------|---------------|
| Voltage Rating: | 36 VDC |
| Interrupt Ratings | up to 625A |
| Operating Temperature Range: | -40° to 125°C |
| Material: | Zinc-alloy |
| Complies with: | DIN 72581/2 |

Ordering Information

| Part Number | Package Size |
|---------------|--------------|
| 156.5610.xxx1 | 100 |
| 156.5610.xxx2 | 2000 |

Pre-arcing Time-limits

TIME-CURRENT CHARACTERISTIC CURVES



FI = 1.00 (max. operating current: $1.0 \times I_{rat}$ at 23°C)

Time-Current Characteristics

| % of Rating | Opening Time Min / Max (s) |
|-------------|----------------------------|
| 130 | 3,600 s / - |
| 250 | - / 60 s |

*Not mentioned in the standards
Corresponding holder see Section "Fuse Holders."