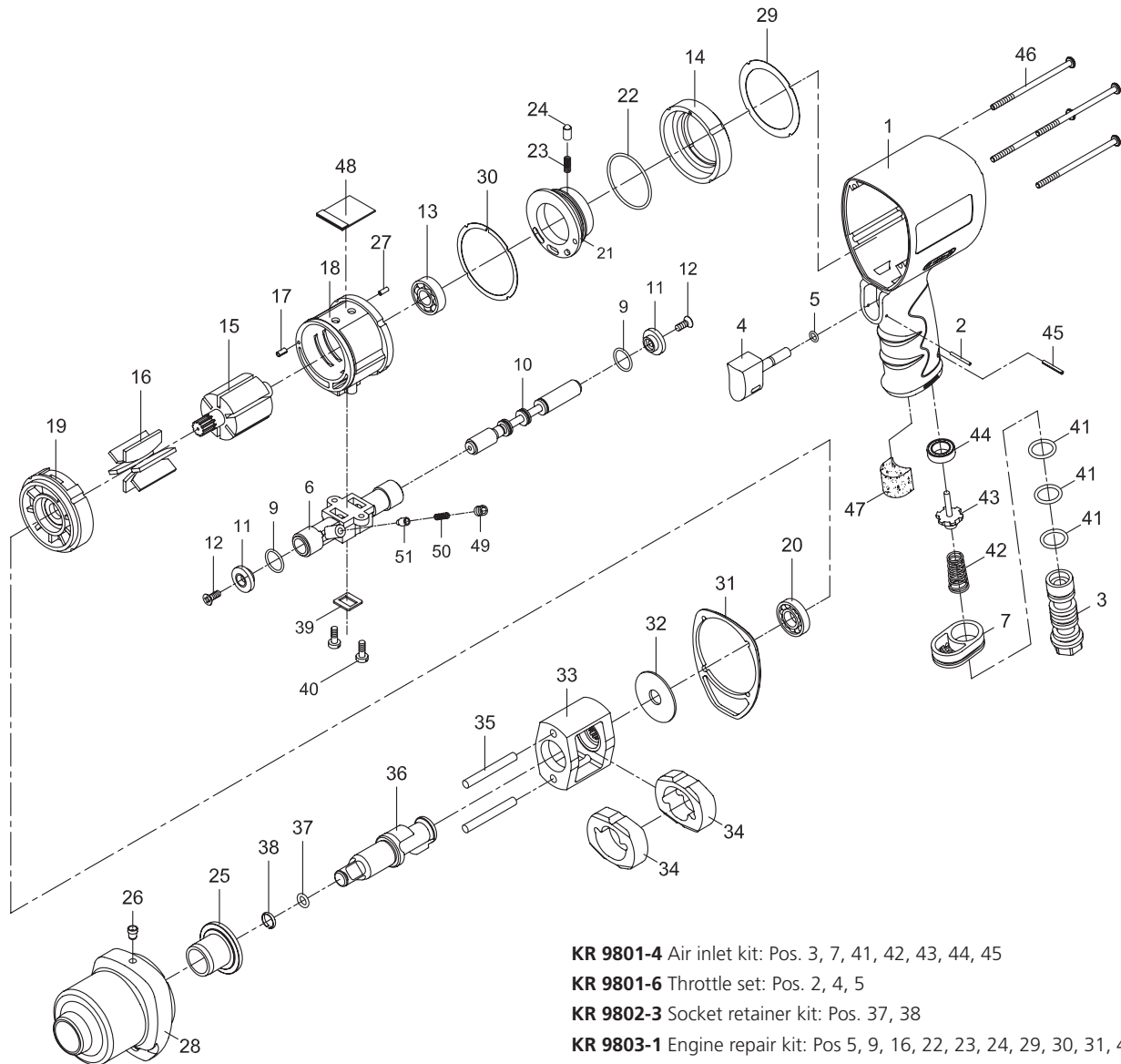


1/2" Professional impact wrench

K 9803



- KR 9801-4** Air inlet kit: Pos. 3, 7, 41, 42, 43, 44, 45
- KR 9801-6** Throttle set: Pos. 2, 4, 5
- KR 9802-3** Socket retainer kit: Pos. 37, 38
- KR 9803-1** Engine repair kit: Pos 5, 9, 16, 22, 23, 24, 29, 30, 31, 41, 44, 50, 51
- KR 9803-2** Gearing repair kit: Pos 31, 34, 35, 36, 37, 38
- KR 9803-3** Impact kit: Pos. 32,33
- KR 9803-4** Reverse kit: Pos. 6, 9, 10, 11, 12, 39, 49, 50, 51
- KR 9803-29** Gasket
- KR 9803-30** Gasket
- KR 9803-32** Washer

Pos.	Parts No.	Description
1		Motor housing
2	KR 9801-6	Spring pin
3	KR 9801-4	Air inlet
4	KR 9801-6	Trigger
5	KR 9803-1, KR 9801-6	O-ring
6	KR 9803-4	Reverse valve
7	KR 9801-4	Exhaust diffuser
9	KR 9803-1, KR 9803-4	O-ring (2 pcs.)
10	KR 9803-4	Reverse stem
11	KR 9803-4	Button (2 pcs.)
12		Screw (2 pcs.)
13		Ball bearing
14		Fixed ring
15		Rotor
16	KR 9803-1	Rotor blade (6 pcs.)
17		Spring pin
18		Cylinder
19		Front end plate
20		Ball bearing
21		Air regulator
22	KR 9803-1	O-ring
23	KR 9803-1	Spring
24	KR 9803-1	Steel ball
25		Anvil bushing
26		Oil cap

Pos.	Parts No.	Description
27		Spring pin
28		Hammer case
29	KR 9803-1, KR 9803-29	Gasket
30	KR 9803-1, KR 9803-30	Gasket
31	KR 9803-1, KR 9803-2	Gasket
32	KR 9803-3, KR 9803-32	Washer
33	KR 9803-3	Hammer cage
34	KR 9803-2	Hammer (2 pcs.)
35	KR 9803-2	Hammer pin (2 pcs.)
36	KR 9803-2	Anvil
37	KR 9803-2, KR 9802-3	O-ring
38	KR 9803-2, KR 9802-3	Retaining ring
39	KR 9803-4, KR 9803-4	Gasket
40		Screw (2 pcs.)
41	KR 9801-4, KR 9803-1	O-ring (3 pcs.)
42	KR 9801-4	Valve spring
43	KR 9801-4	Valve stem
44	KR 9803-1, KR 9801-4	Rubber spacer
45	KR 9801-4	Spring pin
46		Screw (4 pcs.)
47		Muffler material
48		Muffler material
49	KR 9803-4	Set screw
50	KR 9803-1, KR 9803-4	Spring
51	KR 9803-1, KR 9803-4	Pin