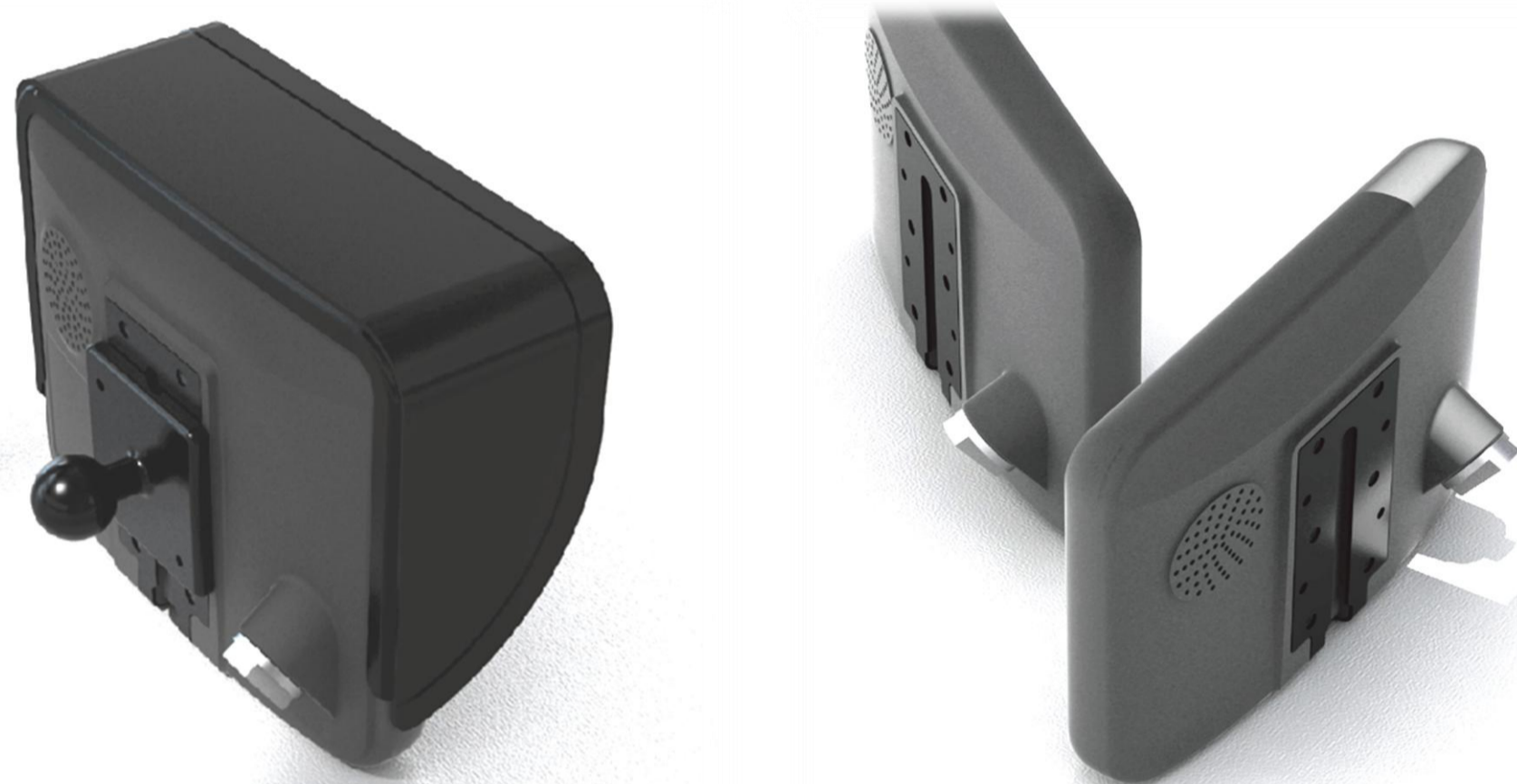


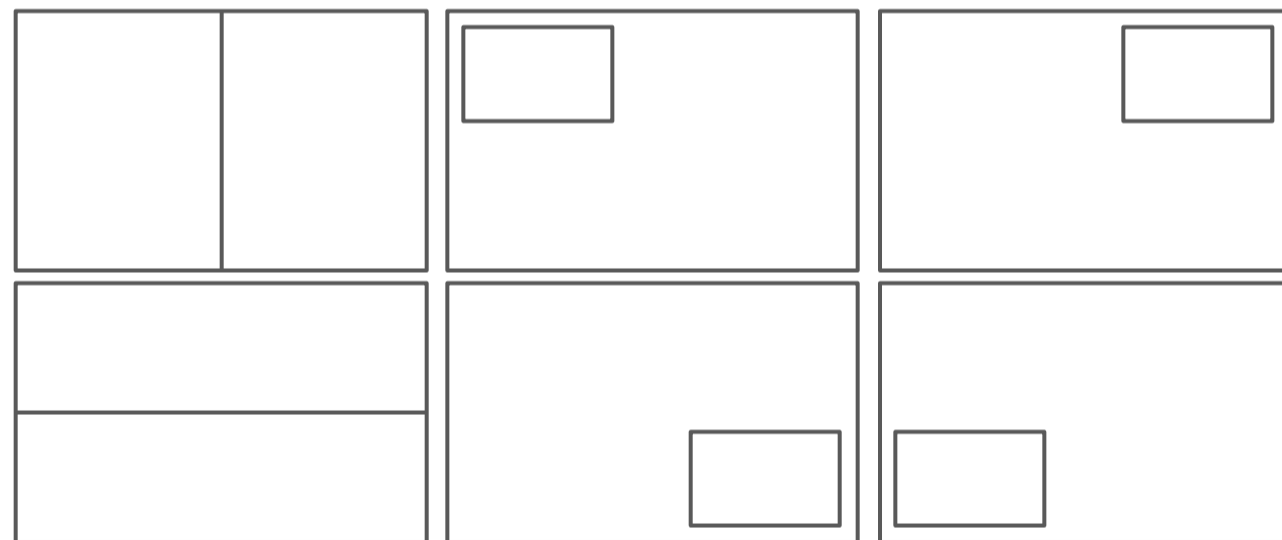


FEATURES

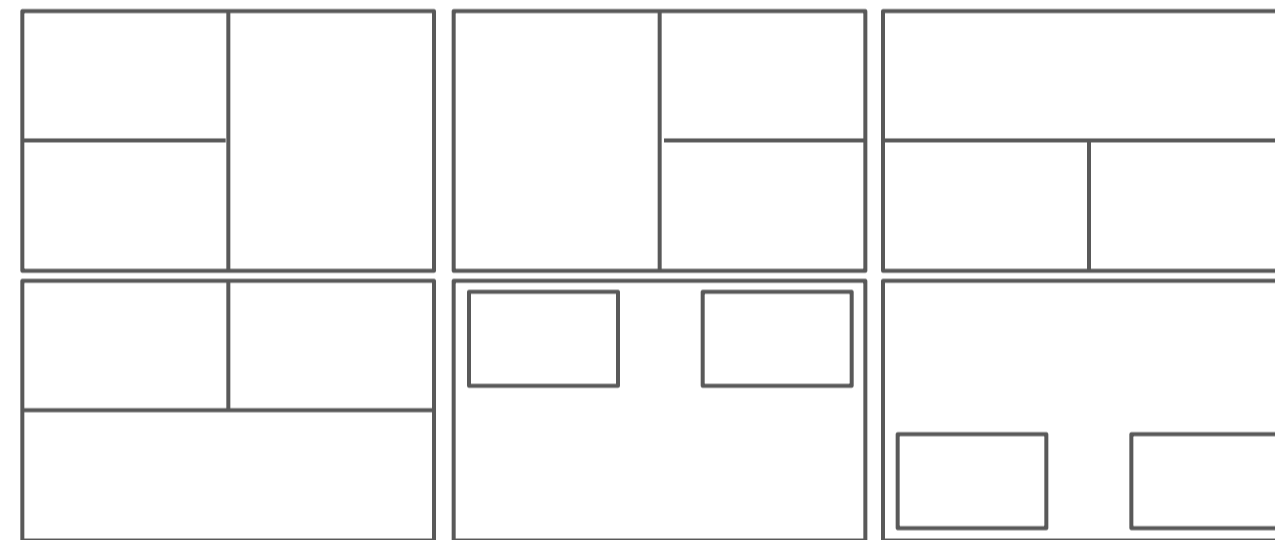
- High Resolution **7" Digital** TFT LCD
- LED Backlight technology (500cd/m2)
- **Heavy Duty (Robust)** Die-casting metal Housing
- **Auto-Heating** Control System (below 0°C)
- **Shutter camera support & camera heater support**
- Water Resistant (**IP69K rating**)
- Capacitive **Touch Key**
- **4 Camera Inputs & 1 AV Input**
- Automatic Brightness Control
- Auto Scan function
- Auto Power ON/OFF
- NTSC/PAL Compatible
- Multi-lingual OSD control
- Tamperproof function
- Built-in Speaker
- Electronic Distance Marker (Parking line & Horizontal line)
- Free Input voltage (DC 10V ~ 30V)
- Bracket rails and **Heavy Duty mounting possibility**
- Speedswitch function via tacho signal (in case of frontview purpose)
- Sunvisor – included
- **All connections via one multi-cable (no external controlbox)**



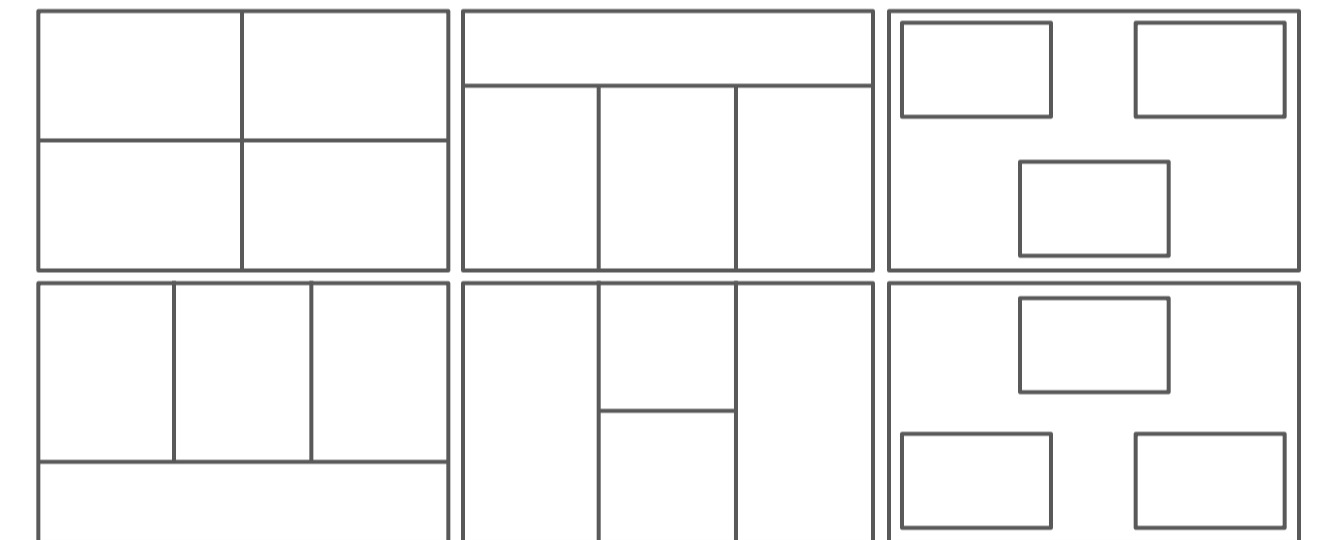
< SPLIT MODE >



< TRIPLE MODE >



< QUAD MODE >



Specifications

Power input	10V~30V DC
Power Consumption	15 Watt Max.
Video System	NTSC, PAL signal Compatible
Panel	7" Digital
Resolution	800 RGB(H) X 480(V)
Format	16:9 wide
Brightness	500cd/m2
Display Mode	Single / Split / Triple / Quad / PIP
Camera Input (4CH)	Mini DIN 4P, 1Vp-p 75Ω
A/V Input	RCA Audio / Video
Operating Temperature	-25°C ~ 75°C
Storage Temperature	-30°C ~ 85°C
Dimensions	190(W) X 142(D) X 42.85(H) mm
Weight	Approx. 790g
O.S.D. control	Day & Night Sensor Bright, Contrast, Color, Tint Mirror/Normal image switch, Up/Down image switch Pre-Heating, Trigger activation, Speed switch, Auto-Scan, Auto-Power, Multi-lingual OSD Factory Reset