



YOUR PRODUCT INTRODUCTION AND INSTALLATION GUIDE.  
WWW.RIGIDINDUSTRIES.COM

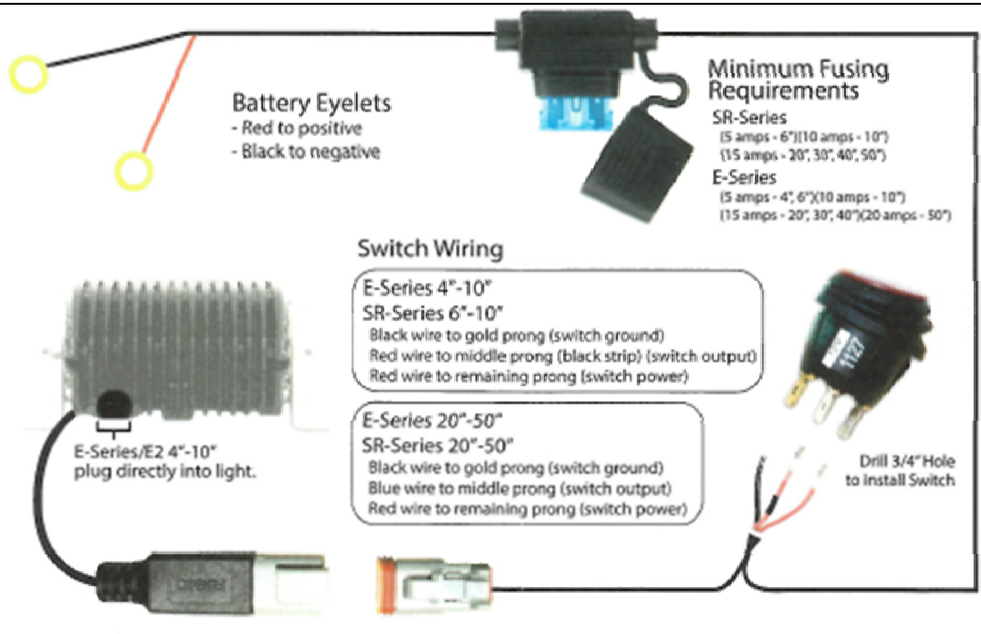


**Congratulations on your purchase of Rigid Lights!**

1. Insert mounting brackets onto light as shown in Diagram A or B. Secure hardware to a snug position and mount your light into desired location. The 4", 6" & 10" E-Series and 6" & 10" SR-Series light bars include bolts that slide into each side of light housing before compression spacers and brackets are attached for mounting.
2. Disconnect the negative battery cable from the battery.
3. Attach red terminal eyelet to battery positive or any 12V DC source. Secure black terminal to suitable ground or battery negative. Route harness to desired switch and mounting locations, secure with zip ties. Beware of sharp edges, abrasive surfaces and heat sources when wiring.
4. When installing Rigid lights on a 24V DC system be sure to use a 24V relay. When installing multiple lights be sure to have adequate fusing.
5. Finally, test lights to ensure proper function and then secure mounting hardware according to your desired light beam angle.

For technical support call us at 855-760-5337.

\*Rigid Industries always recommends installation from an industry professional. Be sure to read warranty information on back.



**WARRANTY INFORMATION**

Rigid Industries warrants that this product will be free from defects in material and workmanship. If you believe your Rigid Industries product is defective, it must be returned to Rigid Industries for inspection by our warranty claims department. If, after inspection, Rigid Industries verifies that the defect was not caused by negligence, abuse, unauthorized repair or disassembly, Rigid Industries will determine whether the product will be repaired or replaced in accordance with Rigid Industries Limited Lifetime Warranty\*.

**Warranty Periods:**

- Flashlights - 1 year
- All LED Light bars - Limited Lifetime
- Batteries - 90 days
- Accessories and Mounts - 2 years

**Warranty Coverage:**

To begin your warranty claim, you must have a Return Merchandise Authorization (RMA) number. To get your RMA number, please contact our warranty department by phone at 855-760-5337 ext. 1008, or by filling out the Return Merchandise Authorization Form on our website.

**All of the following will immediately void all warranties:**

- Customer negligence - The customer has modified the light and/or is not using it for the recommend application. **DO NOT OPEN YOUR LIGHT**
- Customer abuse - Damage to the light beyond normal wear and tear.
- Repair work done by unauthorized personnel without Rigid Industries' approval.
- If the light has been opened or any screws have been removed.

All warranties are non-transferable. Warranty terms and policies are subject to change without notice.

\*For all information regarding the Rigid Industries' Limited Lifetime Warranty please call 855-760-5337 ext. 1008, email warranty@rigidindustries.com, or visit our warranty page online at RigidIndustries.com/About/Warranty.