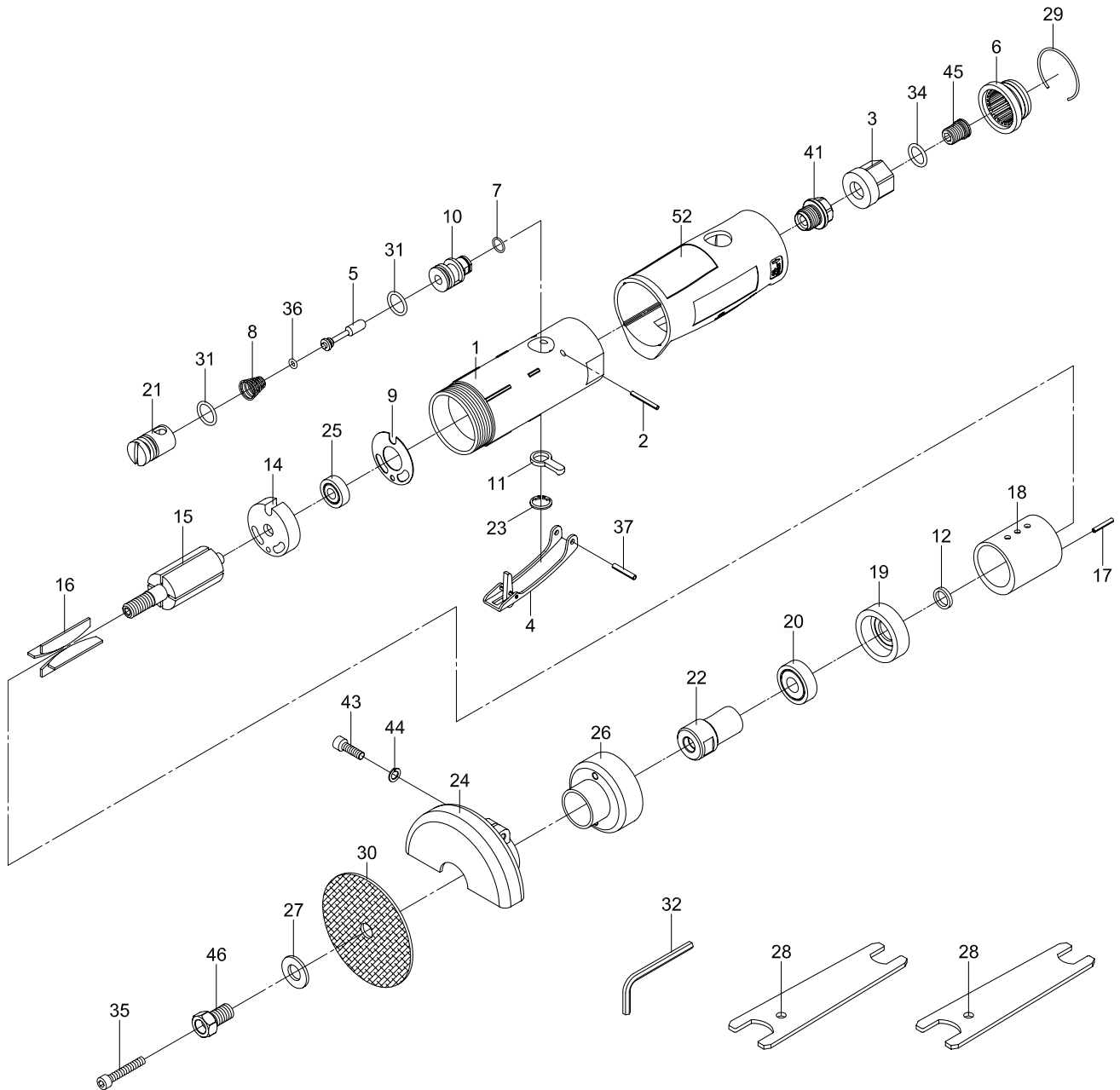


# Reversible cut-off tool

K 9813



**KR 9813-1** Engine repair kit: Pos 7, 8, 9, 16, 31, 34, 36

**KR 9813-2** Gearing repair kit: Pos 9, 20, 25, 35, 46

**KR 9813-3** Throttle set: Pos 4, 37

**KR 9813-4** Air inlet kit: Pos 3, 6, 29, 34, 41, 45

**KR 9813-24** Disc cover

Pos.	Parts No.	Description
1		Motor housing
2		Spring pin
3	KR 9813-4	Air inlet
4	KR 9813-3	Throttle lever
5		Valve stem
6	KR 9813-4	Deflector
7	KR 9813-1	O-ring
8	KR 9813-1	Spring
9	KR 9813-1, KR 9813-2	Motor gasket
10		Reverse valve
11		Reverse lever
12		Rotor spacer
14		Rear end plate
15		Rotor
16	KR 9813-1	Rotor blade (4 pcs.)
17		Spring pin
18		Cylinder
19		Front end plate
20	KR 9813-1	Ball bearing
21		Air regulator
22		Spindle

Pos.	Parts No.	Description
23		Retaining ring
24	KR 9813-24	Disc cover
25	KR 9813-2	Ball bearing
26		Clamp nut
27		Washer
28		Double ended spanner (2 pcs.)
29	KR 9813-4	Retaining ring
30		Cutting wheel
31	KR 9813-1	O-ring (2 pcs.)
32		Hex. key wrench
34	KR 9813-1, KR 9813-4	O-ring
35	KR 9813-2	Screw
36	KR 9813-1	O-ring
37	KR 9813-3	Spring pin
41	KR 9813-4	Fixed shaft
43		Screw
44		Spring washer
45	KR 9813-4	Set screw (2 pcs.)
46	KR 9813-2	Screw
52		Rubber grip