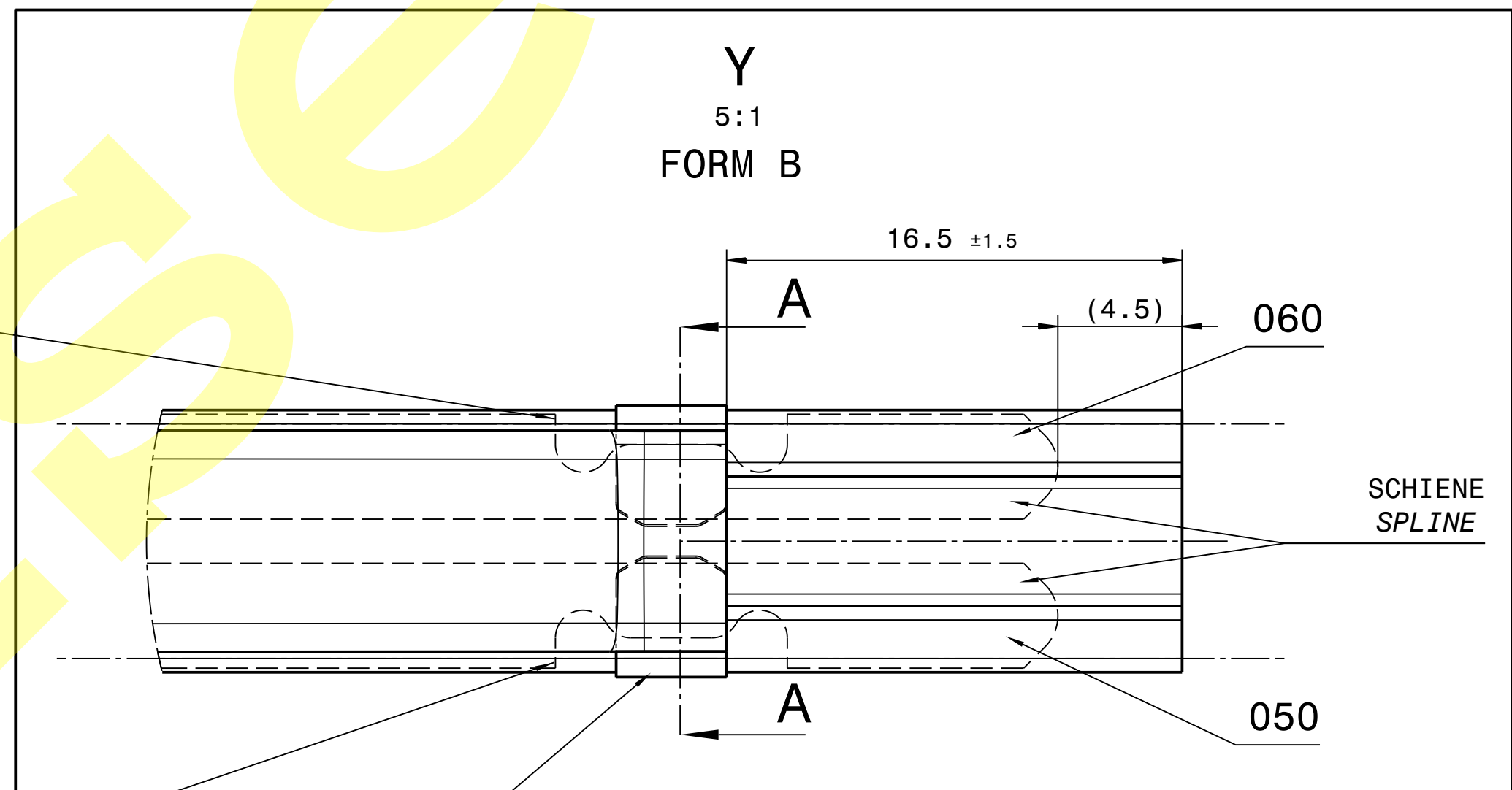
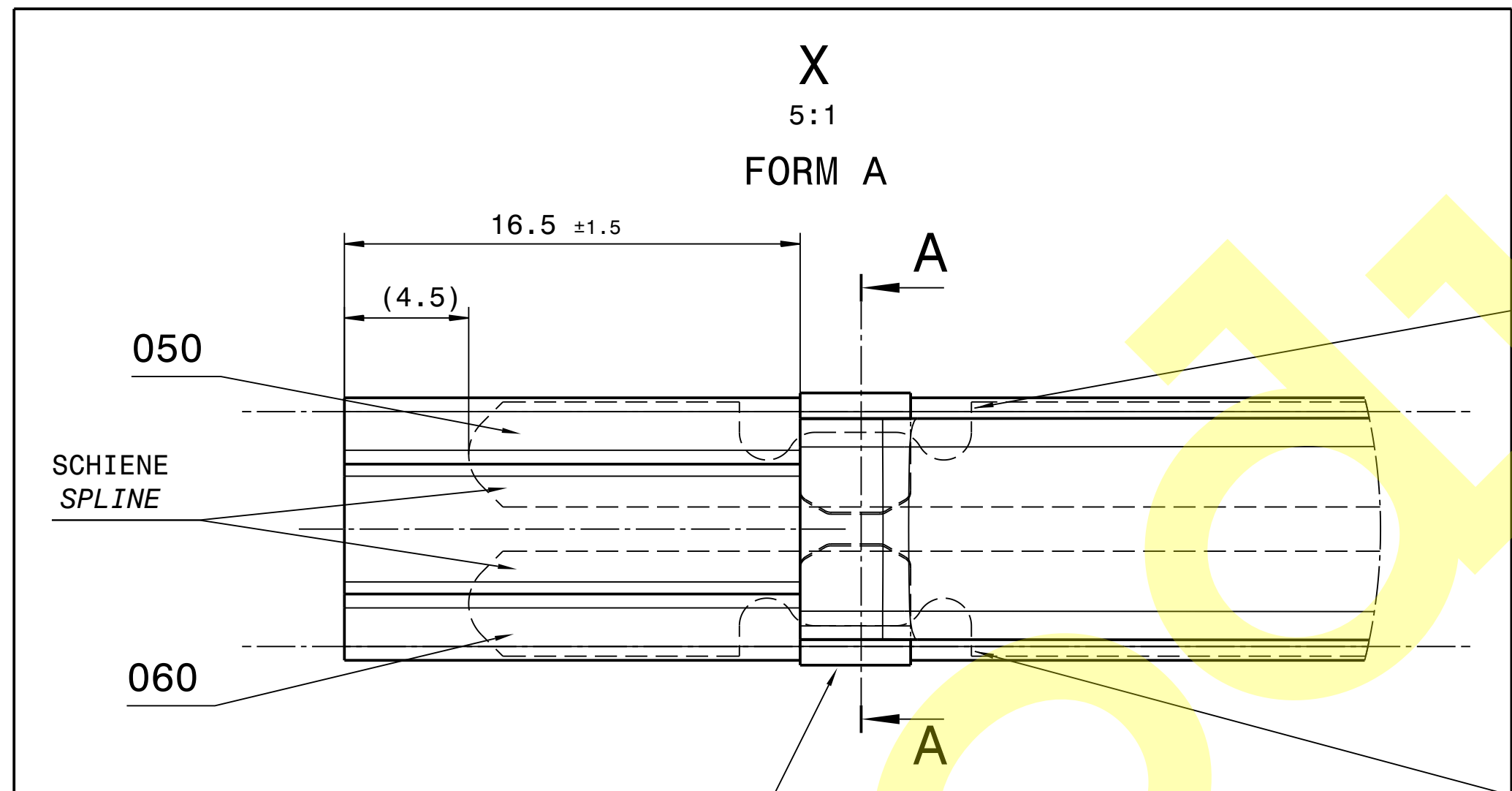
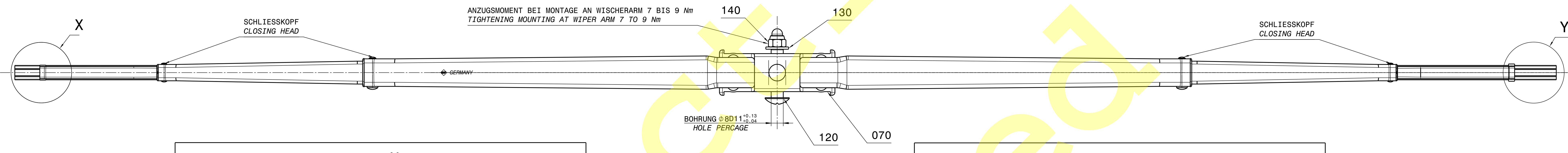
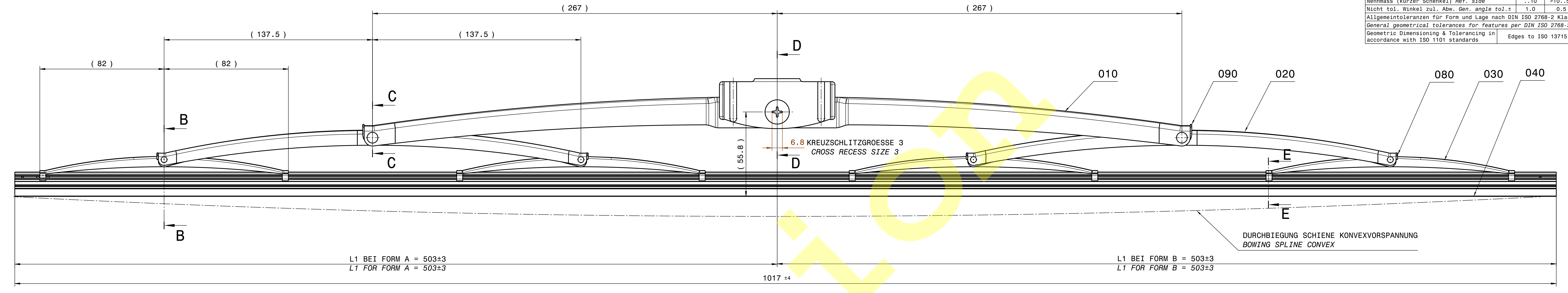


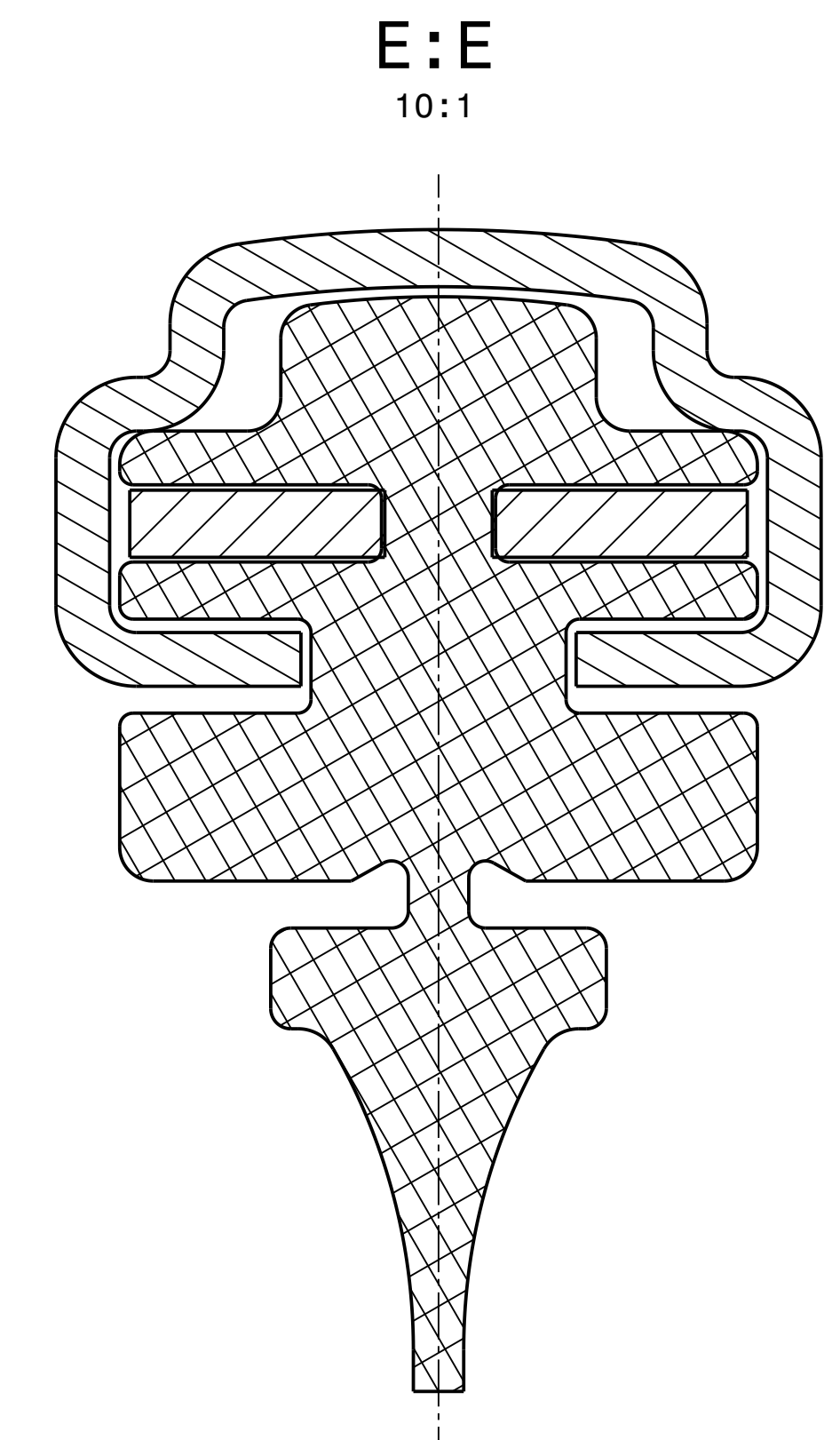
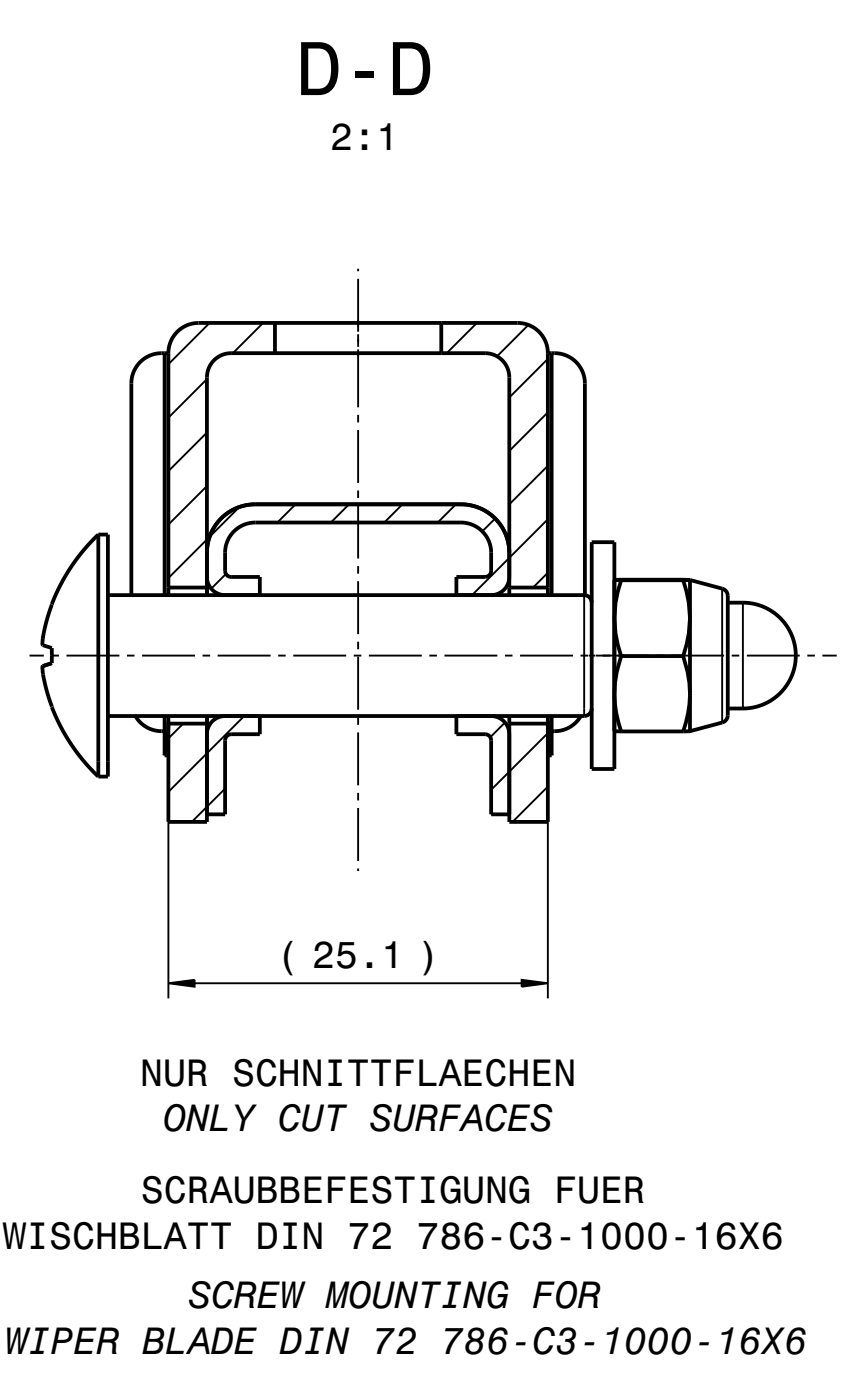
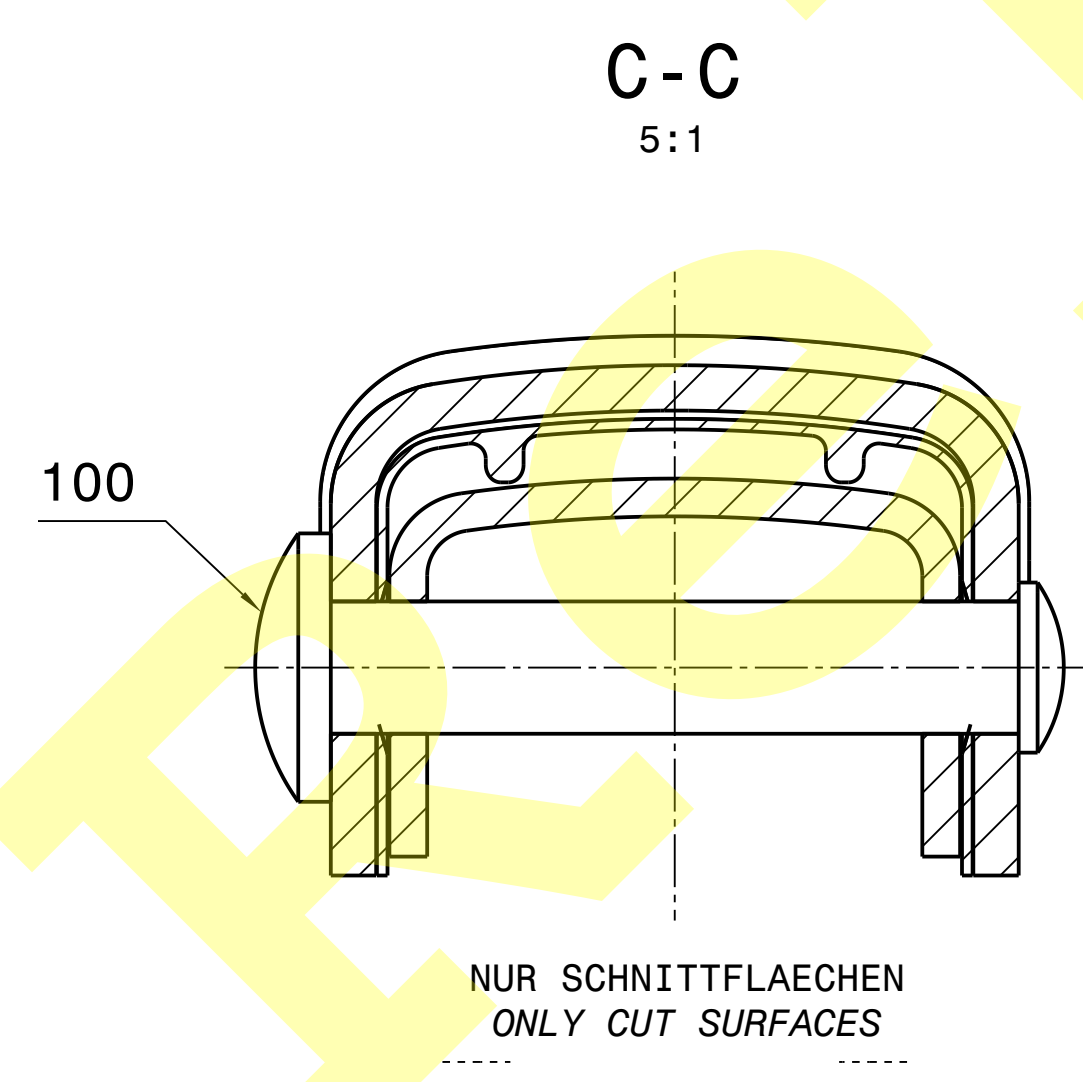
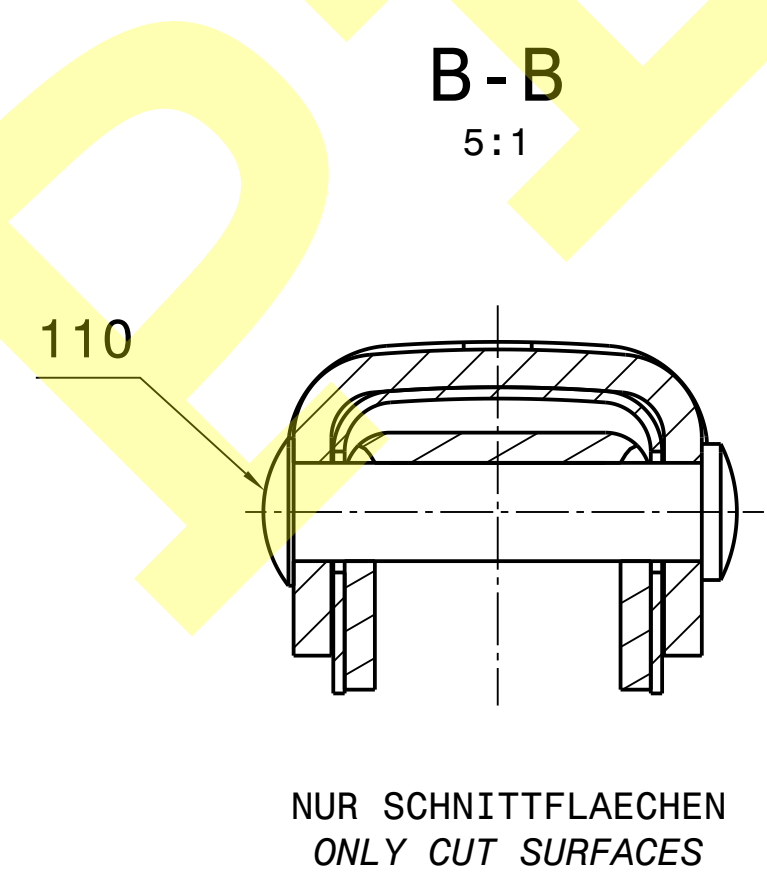
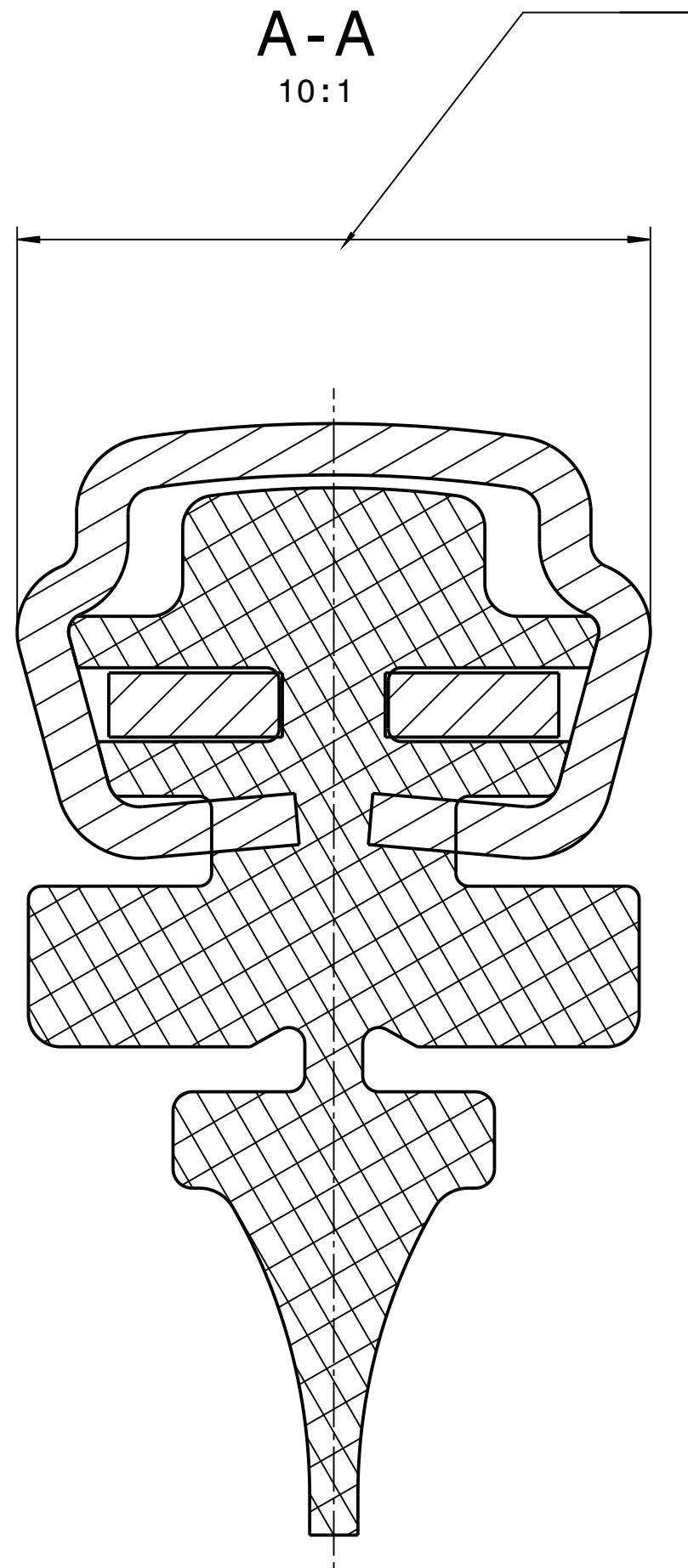
Tolerance / geometrical table :

Nicht tol. Masse	Nom. dim.	.6	>.6..30	>30..120	>120..400	>400..1000
Zul. Abw.	Gen. Tolerances ±	0.1	0.2	0.3	0.5	0.8
Nennmass (kurzer Schenkel) Ref. ±100		..10	>10..50	>50..100	>100	
Nicht tol. Winkel zul. Abw. Gen. angle tol. ±		1.0	0.5	0.3	0.2	
Allgemeintoleranzen für Form und Lage nach DIN ISO 2768-2 Klasse K						
General geometrical tolerances for features per DIN ISO 2768-2 Class K						
Geometric Dimensioning & Tolerancing in accordance with ISO 1101 standards						Surface texture to Edges to ISO 13715 DIN EN ISO 1302



⚠ DIESE ENDKRALLE NACH MONTAGE AUF MASS GEDRUECKT; ENTSPRECHEND W846954
 THIS END CLAW PRESSED TO DIMENSION AFTER ASSY; ACCORDING TO W846954

ENDKRALLE MUSS IN SCHIENENAUSPARUNG MONTIERT WERDEN
 END CLAW MUST BE MOUNTED IN THE SPLINE RECESS



BOM for the PART W000101933

LEVEL	ITEM	QTY	PART	PART FAMILY	DRAWING	MASTER DRAWING
1	010	1.0	190.018.9999	VWS Bow - Main	DRW_190.018.9999_001	ASSEMBLY...
1	020	2.0	193.217.9999	VWS Bow - Secondary	DRW_193.217.9999_001	ASSEMBLY...
1	030	4.0	195.847.9999	VWS Bow - Primary	DRW_195.847.9999_001	ASSEMBLY...
1	040	1.0	W00007232	VWS Blade Element	DRW_W00007232_001	ASSEMBLY...
1	050	1.0	W000101999	VWS Vertebra	DRW_W000101999_001	ASSEMBLY...
1	060	1.0	W000102000	VWS Vertebra	DRW_W000102000_001	ASSEMBLY...
1	070	1.0	190.015.9999	VWS Liner	ASSEMBLY...	ASSEMBLY...
1	080	4.0	187.717.9999	VWS Liner	DRW_187.717.9999_001	ASSEMBLY...
1	090	2.0	193.213.9999	VWS Liner	ASSEMBLY...	ASSEMBLY...
1	100	2.0	914.986.9999	VWS Rivet - Solid	ASSEMBLY...	ASSEMBLY...
1	110	4.0	902.147.9999	VWS Rivet - Solid	ASSEMBLY...	ASSEMBLY...
1	120	1.0	912.438.9999	VWS Screw - Regular with head	ASSEMBLY...	ASSEMBLY...
1	130	1.0	915.546.9999	VWS Washer - Flat	ASSEMBLY...	ASSEMBLY...
1	140	1.0	912.439.9999	VWS Nut - Locking	ASSEMBLY...	ASSEMBLY...

COMPONENTS, MATERIALS AND SURFACE TREATMENTS MUST BE COMPLIANT WITH VALEO BRDS LIST (BANNED, RESTRICTED, DECLARABLE SUBSTANCES LIST : THE LIST IS AVAILABLE IN SRM/REFERENCE DOCUMENTS/SUSTAINABLE DEVELOPMENT + IN PLM WDOC_100084864)

- FOR INITIAL SAMPLE : IMDS APPROVED REPORT WITH COMMITMENT TO BE COMPLIANT WITH LATEST VALEO BRDS LIST AND CERTIFICATES.
- FOR YEARLY INITIAL SAMPLE (YIS) : COMPLIANCE CONFIRMATION ACCORDING THE LATEST VALEO BRDS LIST AND CERTIFICATES.
- FOR PRODUCTION CONTROL PLAN : FOR EACH INCOMING BATCH, MATERIALS AND SURFACE TREATMENTS CERTIFICATES. IN THE SAME WAY THE CONFORMITY FOR MATERIALS AND SURFACE TREATMENTS OF THE COMPONENTS ARE CASCADED DOWN TO THE SUB-SUPPLIER AND CONFIRMED THROUGH YIS TO VALEO

BEMERKUNG:
 REMARK:
 AUSFÜHRUNG: FORM A WAHLWEISE FORM B ZULÄSSIG
 VERSION: FORM A OPTIONAL FORM B PERMITTED

ERSATZ FUER : 106.277
 SUBSTITUTE FOR : 106.277

Risk identification procedure (SPPC & RPN Rules) from VWS: WDOC_W000078221_002

SPPC	Total quantity from all sheets
⚠	1
⚡	0
⚙	1

A	WDOC_0022431	SIRAJA WILSON	2023/08/08	GO TO PRODUCTION
REV	ECO NUMBER	RESPONSIBLE	DATE	DESCRIPTION OF CHANGE
OTHER REFERENCE				
MATERIAL				
TREATMENT COATING				
APPROVED BY				
APPROVED DATE				
ESTIMATED MASS				
655g				
CREATED BY				
SERISH KUMAR				
CREATION DATE				
2021-07-25				
SCALE				
1 : 1				
SIZE				
CUSTOM 1 / 1				

DRW_W000101933_001 A

W000101933