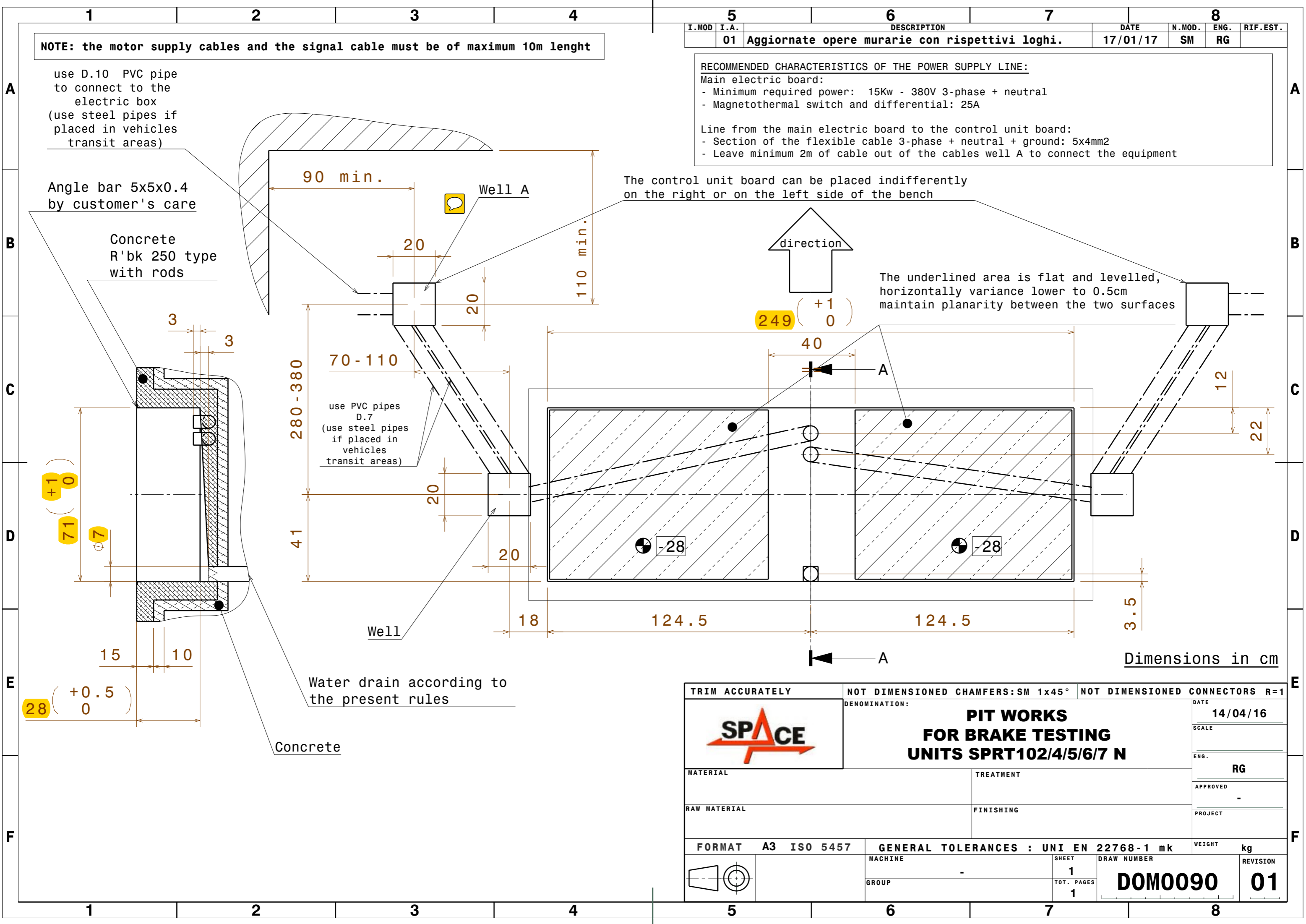

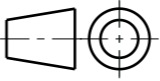


**NOTE: the motor supply cables and the signal cable must be of maximum 10m length**

I.MOD	I.A.	DESCRIPTION	DATE	N.MOD.	ENG.	RIF. EST.
01		Aggiornate opere murarie con rispettivi loghi.	17/01/17	SM	RG	

**RECOMMENDED CHARACTERISTICS OF THE POWER SUPPLY LINE:**  
 Main electric board:  
 - Minimum required power: 15Kw - 380V 3-phase + neutral  
 - Magnetothermal switch and differential: 25A  
 Line from the main electric board to the control unit board:  
 - Section of the flexible cable 3-phase + neutral + ground: 5x4mm<sup>2</sup>  
 - Leave minimum 2m of cable out of the cables well A to connect the equipment



TRIM ACCURATELY		NOT DIMENSIONED CHAMFERS: SM 1x45°		NOT DIMENSIONED CONNECTORS R=1	
		DENOMINATION:		DATE	
		<b>PIT WORKS FOR BRAKE TESTING UNITS SPRT102/4/5/6/7 N</b>		14/04/16	
MATERIAL		TREATMENT		SCALE	
RAW MATERIAL		FINISHING		ENG. <b>RG</b>	
FORMAT <b>A3 ISO 5457</b>		GENERAL TOLERANCES : UNI EN 22768-1 mk		APPROVED	
MACHINE		SHEET		PROJECT	
GROUP		TOT. PAGES		WEIGHT <b>kg</b>	
		<b>1</b> 1		<b>DOM0090</b> <b>01</b>	

Dimensions in cm