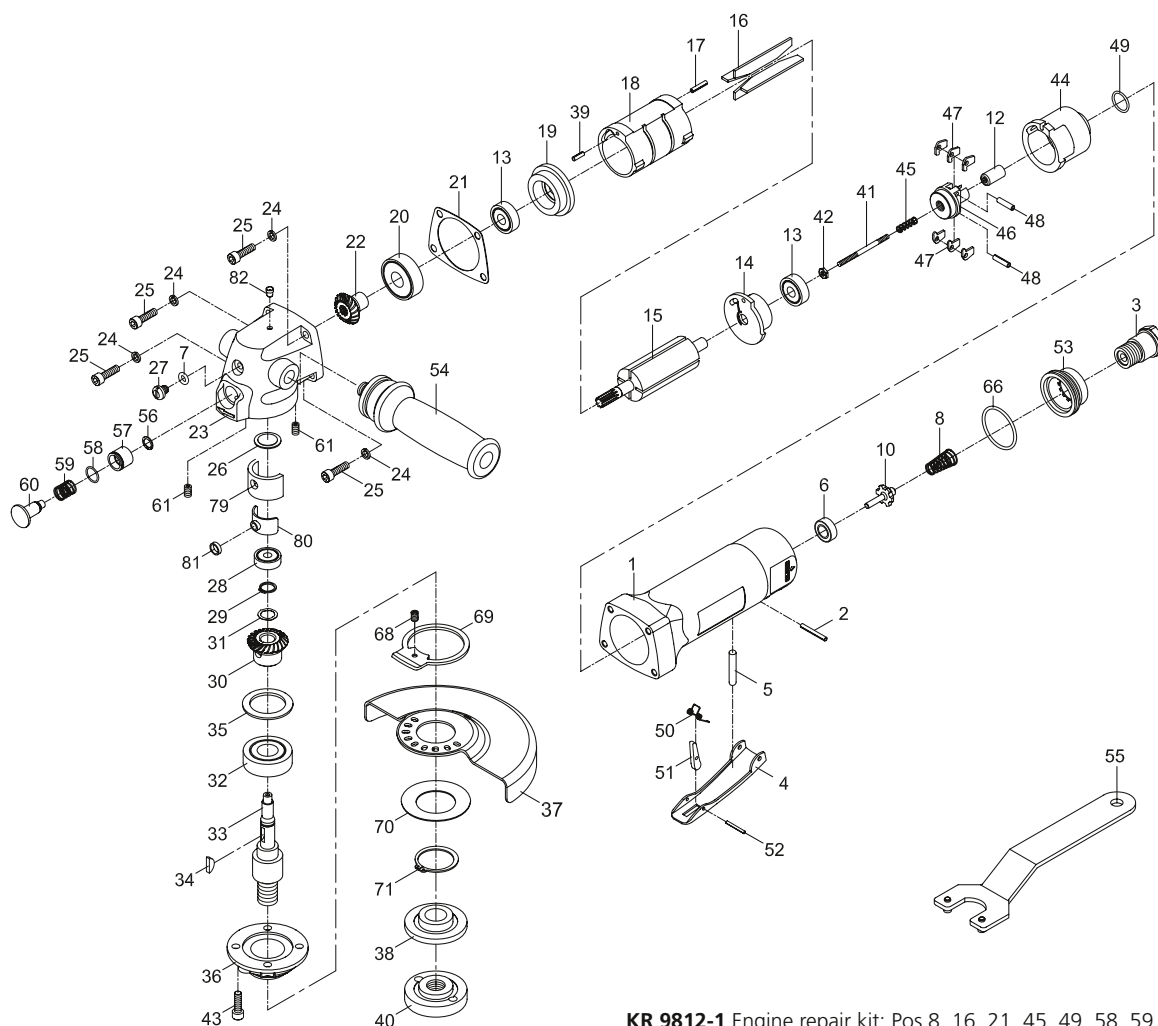


5" Governed disc grinder

K 9812



KR 9812-1 Engine repair kit: Pos 8, 16, 21, 45, 49, 58, 59, 66

KR 9812-2 Gearing repair kit: Pos 13, 21, 28, 32, 40

KR 9812-3 Throttle set: Pos 2, 4, 5, 50, 51, 52

KR 9812-4 Air inlet kit: Pos 3, 6, 8, 10, 53, 66

KR 9812-37 Disc cover

KR 9812-54 Handle

Pos.	Parts No.	Description
1		Motor housing
2	KR 9812-3	Spring pin
3	KR 9812-4	Air inlet
4	KR 9812-3	Throttle lever
5	KR 9812-3	Pin
6	KR 9812-4	Rubber spacer
7		O-ring
8	KR 9812-1, KR 9812-4	Spring
10	KR 9812-4	Valve stem
12		Plunger
13	KR 9812-2	Ball bearing (2 pcs.)
14		Rear plate
15		Rotor
16	KR 9812-1	Rotor blade (4 pcs.)
17		Spring pin
18		Cylinder
19		Front end plate
20		Ball bearing
21	KR 9812-1, KR 9812-2	Gasket
22		Bevel gear
23		Gear housing
24		Spring washer (4 pcs.)
25		Screw
26		Spacer
27		Screw
28	KR 9812-2	Ball bearing
29		Retaining ring
30		Bevel gear
31		Wave washer
32	KR 9812-2	Ball bearing
33		Spindle
34		Key

Pos.	Parts No.	Description
35		Spacer
36		Bearing cap
37	KR 9812-37	Disc cover
38		Flange
39		Spring pin
40	KR 9812-2	Flange nut
41		Adjust screw
42		Adjust nut
43		Screw (4 pcs.)
44		Inlet guide
45	KR 9812-1	Spring
46		Governor
47		Pendulum (6 pcs.)
48		Spring pin (2 pcs.)
49	KR 9812-1	O-ring
50	KR 9812-3	Spring
51	KR 9812-3	Safety bar
52	KR 9812-3	Spring pin
53	KR 9812-4	Exhaust diffuser
54	KR 9812-54	Handle
55		Pin wrench
56		Retaining ring
57		Bushing
58	KR 9812-1	O-ring
59	KR 9812-1	Spring
60		Spindle stop button
61		Set screw (2 pcs.)
66	KR 9812-1, KR 9812-4	O-ring
68		Spring
69		Lock ring
70		Disc spring
71		Retaining ring