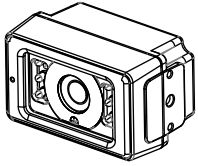
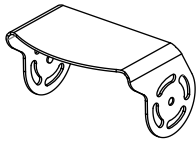


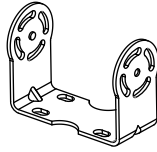
◆ Contents



Camera x 1



Sun-shield x 1



Bracket x 1



Camera Screw Kit x 1



Instruction manual x 1

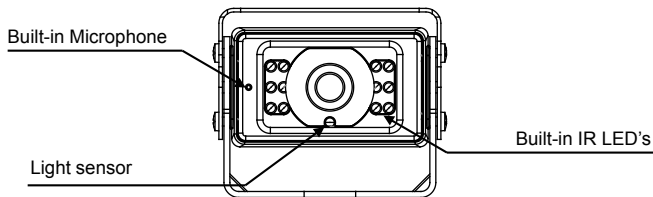
◆ Features

- Best picture quality (in combination with Digital LCD monitor)
- High resolution CMOS camera (1.2M pixels)
- 1/3.2" Color CMOS high resolution image sensor
- IP69K Waterproof Rating
- Diagonal 130° Viewing
- Ultra low light performance
- Automatic Electronic Iris
- Built-in Microphone
- Built-in IR LED's
- Mirror image setting
- Built-in Automatic Heater (below +10°C)
- Temp. -30°C ~ 80°C
- Vibration resistant
- Waterproof screw type connector (IP67), 4-pin mini-DIN.
- E-mark.

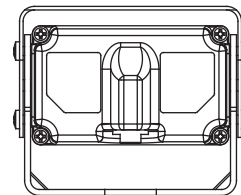
◆ Technical Specifications

Image Sensor	1/3.2" Color SONY SUPER HAD II CMOS
Scanning System	PAL 1.2M pixels
Resolution	900 TV Lines
S/N ratio	Better than 50dB (at AGC off)
Minimum Illumination	0.1 lux (IR LED's on)
Power supply	DC 12V
Power Consumption	DC 12V, 375mA (Heater on) DC 12V, 145mA (Heater off)
Operating Temperature	-30°C to +80°C
Field of View angle	130° (Diagonal), 110° (Horizontal), 81° (Vertical)
Dimension	67(W) x 40(H) x 50(D) mm
Weight	350g (total weight incl. bracket & sunvisor: 400g)

■ Front View



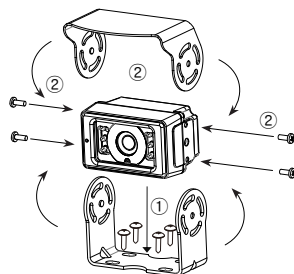
■ Rear View



◆ Installation

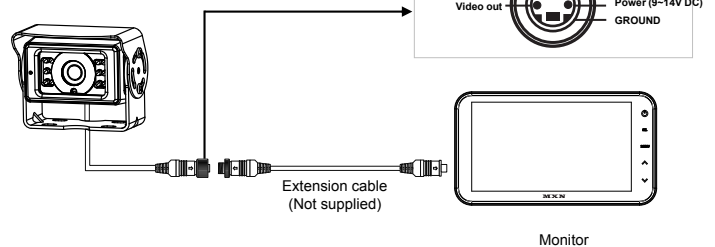
■ Camera Assembly

1. Fix the supplied mounting bracket to the vehicle.
2. Fix the bracket with camera and sun-shield according to drawing.
3. Adjust the viewing angle of the camera and fasten the screws firmly.



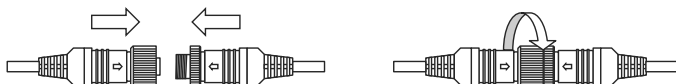
■ Wiring to Monitor

Run the cable from the camera to the monitor.



■ Securing cable connection

1. Match the arrow marks and press the connectors together.
2. Screw the camera connector up clockwise.



3. Tighten cable connection firmly in order to prevent water ingress.

Note!

The warranty will not be valid if the problem is related to moist / corrosion in the connector.

■ Caution !!

1. Before making the connection, disconnect the ground terminal from the battery to avoid short circuits.
2. The plugs should be fully inserted into the connectors or jacks. A loose connection may cause malfunctioning of the unit.
3. A damaged cable may affect the operation of the camera and may even cause a malfunction of the camera or monitor: Avoid a damaged cable!
4. Protect the cable by using a guide tube, pipe or run the cable inside the vehicle as much as possible. Caution! Run the cable in natural shapes in order to prevent cable breaks.
5. Preferably use an acid free grease in between the waterproof screw type connectors and tighten them firmly each other.