


Contents 

1. Essential Safety Notices.....	12
1.1 Safety Notices and Warnings	12
1.2 Personal Protective Equipment.....	12
1.3 Intended Use	13
1.4 Safe and Proper Use.....	13
1.5 Work Environment.....	13
1.6 Appropriate Users	13
2. Product Description.....	14
2.1 KL-0214-22 Pulling Device for Double-Type Silentbloc.....	14
2.2 Technical Data.....	14
3. Preparatory Work.....	14
3.1 Checking the Delivery	14
3.2 Preparing the Vehicle	14
3.3 Preparing the Tool	14
4. Double-Type Silentbloc Removal / Double-Type Silentbloc Installation.....	15
4.1 Removing the Double-Type Silentbloc.	15
4.2 Installing the Double-Type Silentbloc.	16
5. Care and Storage	18
6. Accessories.....	18
7. Maintenance and Repair by the KLANN Service Centre.....	18
8. Spare Parts List.....	18
9. Environmentally Safe Disposal.....	18

1. Essential Safety Notices



 Before using the pulling device, it is imperative to read and understand the instruction manual. Misuse can lead to **SERIOUS** or **FATAL INJURIES**.

This instruction manual is part of the pulling device. Store the instruction manual in a safe place for any further use and give it to the subsequent users of the pulling device.

All specific vehicle data stated herein are supplied under reserve and without commitment.

1.1 Safety Notices and Warnings

For better differentiation, the warning notices in this instruction manual are classified as follows:

Warning sign	Sign reads	Meaning
	DANGER	Indicates a hazardous situation which, if not avoided, may result in serious or fatal injuries .
	CAUTION	Indicates a hazardous situation which, if not avoided, may result in moderate or minor injuries .
	ATTENTION	Indicates a situation which, if not avoided, may result in possible damage to the pulling device or its functioning, or to objects in its vicinity.

DANGER

When removing and installing silentblocs there is the risk that the pull spindle could break and fall to pieces. This will lead to parts or the tool becoming projectiles.

- Observe and do not exceed the maximum load capacity of the pull spindle.
- Use hydraulic pump with pressure gauge **KL-0040-2529**.
- Only use Original KLANN spare parts.
- Always keep all parts of your body away from the axial extension of the pull spindle.

CAUTION

A falling tool can cause injuries.

- Always wear safety shoes / boots.

ATTENTION

Risk of damage to vehicle and tool.

- Any work on vehicles should only be performed by qualified specialist personnel observing and complying with the directions, provisions, and safety regulations specified by the vehicle manufacturer.
- Only the vehicle manufacturer's data apply to any work on the vehicle.

1.2 Personal Protective Equipment

ALWAYS wear personal protective equipment when using the pulling device. The pulling device can cause mechanical hazards leading to injuries such as contusions, cuts or concussions.



EYE PROTECTION (see OSHA 29 CFR 1910.133 and ANSI Z87) designed to protect you from flying objects must be worn when using the pulling device.

- Particles may be ejected at very high speed while working with the pulling device and could cause serious injuries to your eyes.



SAFETY GLOVES must be worn when using the pulling device.


- Working with the pulling device can cause skin abrasions and contusions.



SAFETY SHOES/BOOTS with slip resistant soles and steel-toe caps (see OSHA 29 CFR 1910.136 and ANSI 241) must be worn when using the pulling device.

- Falling parts can cause serious injuries to feet and toes.

1.3 Intended Use

 The pulling device is designed and should only be used for removing and installing assembly carrier double-type silentblocs in situ on the vehicle.

The pulling device may only be used according to the directions and provisions specified in the instruction manual.

- Any other use can result in severe injuries or even death.

1.4 Safe and Proper Use

Take the following safety precautions to prevent injuries and damage that could be caused by improper handling or unsafe use of the pulling device.

 Misuse can result in extremely severe injuries or even death.

- NEVER overload the pulling device.
- Always check the pulling device prior to EACH use in order to ensure that it is in good order and condition.
- Damaged or worn parts MUST be replaced prior to use.
- ONLY use GENUINE KLANN replacement and accessory parts on the pulling device.

1.5 Work Environment

Work with the pulling device should only be carried out in a safe work environment.

- The workplace must always be clean and tidy.
- The workplace must be sufficiently large and secured.

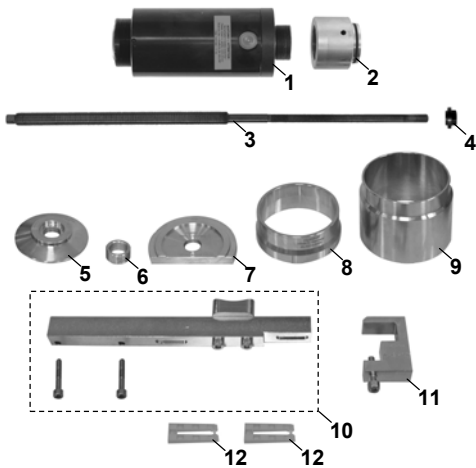
1.6 Appropriate Users

This instruction manual is designed for technicians in workshops.

DO NOT allow children to use the pulling device.

Purchasers / employers purchasing the pulling device MUST ensure that any person / employee using the pulling device have read and understood this instruction manual prior to using the tool. This instruction manual MUST be made available to the users of the pulling device / employees for reference at all times.

Fig. 1: KL-0214-22



2. Product Description

2.1 KL-0214-22 Pulling Device for Double-Type Silentbloc, with Hydraulic Cylinder

Suitable for:

- Audi A3 (8P1), 05/2003 onwards;
- Audi TT (8J3, 8J9) from 08/2006 to 06/2010;
- Seat Altea (5P5, 5P5, 5P8), 03/2004 onwards;
- Seat Leon (1P1), 05/2005 onwards;
- Seat Toledo III (5P2) from 04/2004 to 05/2009;
- Skoda Octavia (1Z3, 1Z5) from 02/2004 to 12/2010;
- VW Caddy III (2KA, 2KB, 2KH, 2KJ, 2CA, 2CB, 2CH, 2CJ) from 04/2004 to 08/2010;
- VW EOS (1F7, 1F8), 06/2006 onwards;
- VW Golf Plus (5M1, 521), 01/2005 onwards;
- VW Golf V (1K1, 1K5) from 10/2003 to 2009;
- VW Golf VI (5K1, AJ5), 10/2008 onwards;
- VW Jetta III (1K2) from 08/2005 to 10/2010;
- VW Touran (1T1, 1T2, 1T3), 08/2003 onwards;
- VW Passat (3C2, 3C5,) from 03/2005 to 06/2010;
- VW Passat (363, 365), 08/2010 onwards;
- VW Scirocco (137), 05/2008 onwards;
- VW Tiguan 5N, 09/2007 onwards.

The KL-0214-22 pulling device allows removal and installation of assembly carrier double-type silentblocs to be performed in situ on the vehicle. Loosening or removing the assembly carrier from the vehicle as well as follow-up wheel alignments are no longer necessary by using this tool.

Note: The hydraulic hand pump KL-0215-35 M25 (accessory) is needed to drive the hydraulic cylinder KL-0040-2500.

Pos.	Part No.	Description
1	KL-0040-2500	Hydraulic cylinder
2	KL-0039-1003	Retainer adaptor
3	KL-0039-1912-1	Pull spindle M12
4	KL-0039-1912-3	Shoulder nut M12 (flat), waf 19 mm
5	KL-0214-2201	Pressure piece, Ø89.5 mm
6	KL-0214-2202	Spacer ring Ø30 mm
7	KL-0214-2203	Setting plate
8	KL-0214-2204	Conical sleeve Ø90 mm
9	KL-0214-2205	Support sleeve Ø92.7 mm
10	KL-0214-2207	Clamping device
11	KL-0214-2206	Clamp with screw
12	KL-0124-2208-1	Plastic wedge (2 units)

2.2 Technical Data

Maximum load capacity of pull spindle M12: 7 t
 Maximum load capacity hydraulic cylinder: 17 t

3. Preparatory Work

Before using the pulling device for the first time, check and confirm you have all the parts listed in the scope of delivery. Then, read and follow the mounting instructions.

3.1 Checking the Delivery (Fig. 1)

3.2 Preparing the Vehicle.

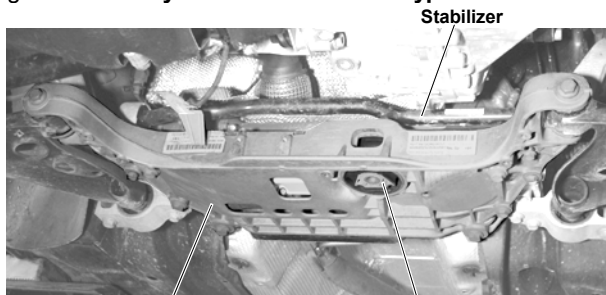
Loosen and/or remove all necessary components.

Release stabilizer mount. On the left-hand side of the vehicle, push stabilizer upwards using the plastic wedges "12".

3.3 Preparing the Tool.

Screw retainer adaptor "2" onto hydraulic cylinder "1" and screw pull spindle "3" into hydraulic cylinder "1". (Fig. 4)

Fig. 2: Assembly carrier with double-type silentbloc.



Assembly carrier

Double-type silentbloc

Fig. 3: Double-type silentbloc.



Fig. 4: Adaptor, Pull Spindle, Hydraulic Cylinder



Fig. 5: Screw on clamping device.

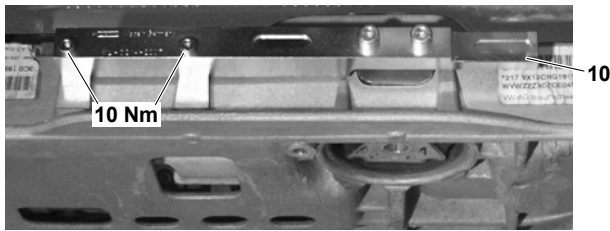


Fig. 6: Fit clamp to clamping device.

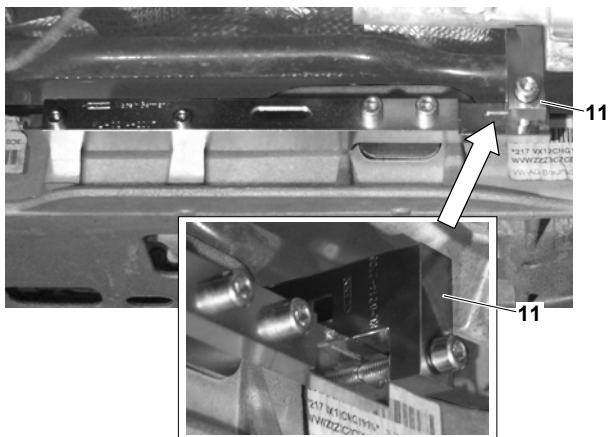


Fig. 7: Pressure piece and shoulder nut.

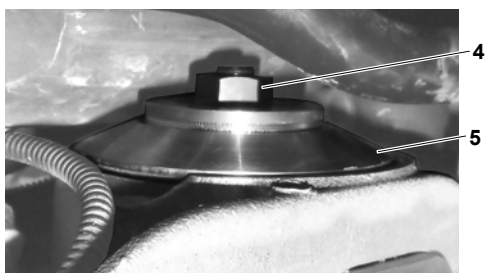
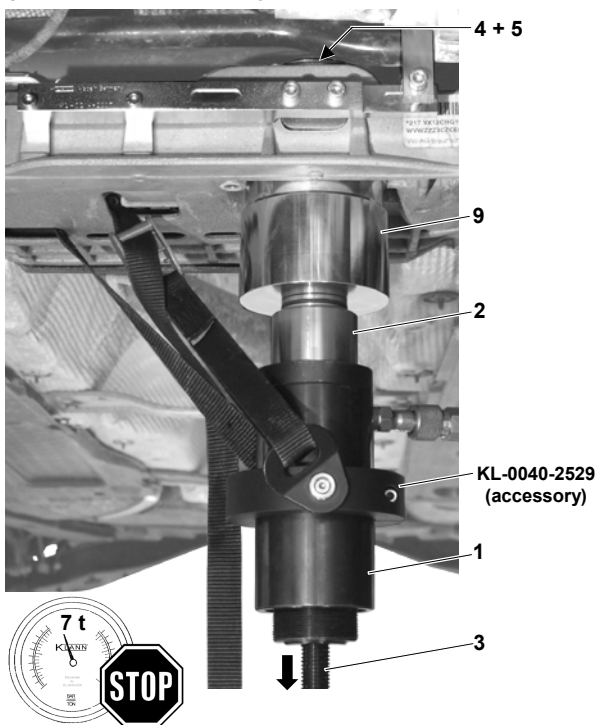


Fig. 8: Remove double-type silentbloc.



4. Double-Type Silentbloc Removal / Double-Type Silentbloc Installation

These instructions describe the procedure of removing and installing an assembly carrier double-type silentbloc in situ on the vehicle.

4.1 Removing the double-type silentbloc.

1. Screw clamping device "10" to assembly carrier (Fig. 5). Tightening torque for the screws is approximately 10 Nm.
2. Fit clamp "11" to clamping device "10" and slightly tighten the screw of clamp "11". (Fig. 6)

3. ATTENTION

Risk of damage to shoulder nut "4", pressure piece "5" and support sleeve "9".

- Make sure that pressure piece "5" is positioned correctly in the silentbloc bore.
- Make sure that shoulder nut "4" is positioned correctly in pressure piece "5". (Fig. 7)
- Align the support sleeve "9" so that the removed silentbloc can be inserted into the inner-Ø of support sleeve "9" without risk of collision.

From the top, place pressure piece "5" onto silentbloc. Insert shoulder nut "4" into pressure piece "5". (Fig. 7) Put on support sleeve "9" onto retainer adaptor "2" of the prepared hydraulic cylinder "1". From the bottom, push pull spindle "3" through the double-type silentbloc. Screw shoulder nut "4" onto pull spindle "3" so that they are flush with each other. Turn back pull spindle "3" until support sleeve "9" rests against assembly carrier.

4. Use safety belt KL-0040-2590 (accessory) to prevent tool from falling.
5. Connect hydraulic cylinder "1" to hydraulic pump (accessory).
6. **⚠ DANGER**

When removing double-type silentblochs, there is the risk that the pull spindle could break and fall to pieces. This will lead to parts or the tool becoming projectiles.

- Observe and do not exceed the maximum load capacity of the pull spindle.
- Use hydraulic pump with pressure gauge KL-0040-2529.
- Only use Original KLANN spare parts.
- Always keep all parts of your body away from the axial extension of the pull spindle.

Operate hydraulic pump and remove double-type silentbloc. (Fig. 8)

During the removal process, read the required force on the pressure gauge of the hydraulic pump. Observe and do not exceed the maximum load capacity of the pull spindle. Remember that the working stroke of the hydraulic cylinder is 45 mm. Therefore, it could be necessary to re-position the pull spindle during the removal process.

As soon as you notice high pressure on the pump lever, open pump release valve (piston of hydraulic cylinder returns to its zero-position). Then, close pump valve, turn back pull spindle "3" until support sleeve "9" rests against assembly carrier and continue removal process.

In case of severely seized double-type silentblochs, it is recommended to heat them up using a hot air blower.

Fig. 9: Align clamping device.

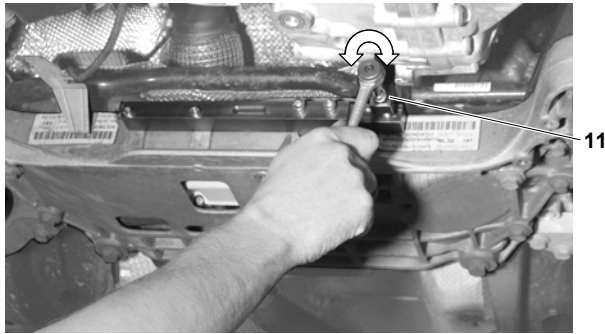


Fig. 10: Segment is flush with silentbloc bore.

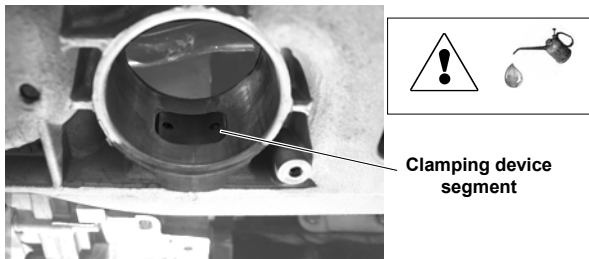


Fig. 11: Setting plate and shoulder nut.

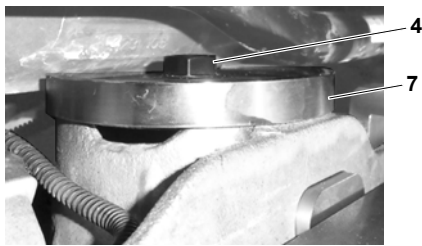


Fig. 12: Retainer adaptor, spacer ring, pressure piece.

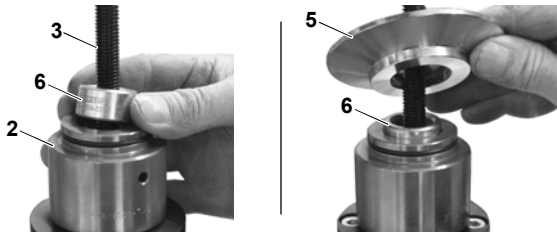
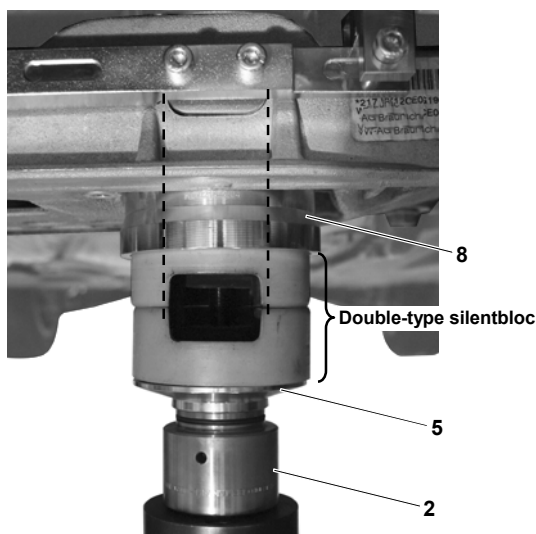


Fig. 13: Align double-type silentbloc with conical sleeve.



4.2 Installing the Double-Type Silentbloc.

1. Align segment of clamping device "10" (Fig. 9). To do so, tighten screw of clamp "11" until segment is flush with the inner-Ø of the silentbloc bore. (Fig. 10)

2. Clean the inner-Ø of the silentbloc bore and lubricate it with an appropriate mounting paste.

3. **ATTENTION**

Risk of damage to shoulder nut "4", setting plate "7" and double-type silentbloc.

- Make sure that setting plate "7" is positioned correctly in the silentbloc bore.
- Make sure that shoulder nut "4" is positioned correctly in setting plate "7". (Fig. 11)
- Observe the double-type silentbloc mounting position specified by the manufacturer.

With its flat side facing upwards, place setting plate "7" on silentbloc bore. (Fig. 11)

Insert shoulder nut "4" into setting plate "7".

Note:

Be sure to install spacer ring "6" between retainer adaptor "2" and pressure piece "5". (Fig. 12 A and 12 B)

From the bottom, place hydraulic cylinder "1" with retainer adaptor "2", pull spindle "3", spacer ring "6", pressure piece "5", double-type silentbloc and conical sleeve "8" on the silentbloc bore.

Screw shoulder nut "4" onto pull spindle "3" so that they are flush with each other. Turn back pull spindle "3" until conical sleeve "8" rests against assembly carrier.

Align double-type silentbloc and markings of conical sleeve "8" with segment of clamping device "10". (Fig. 13)

Fig. 14: Double-Type Silentbloc Installation

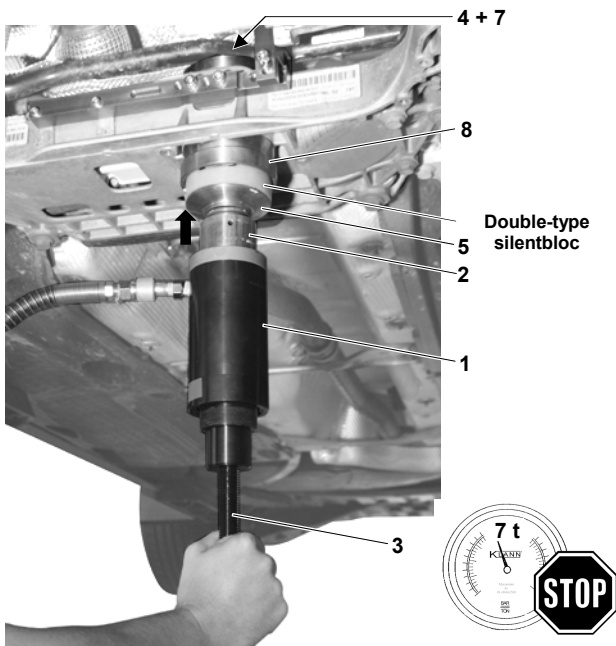


Fig. 15: Turn setting plate upside down.

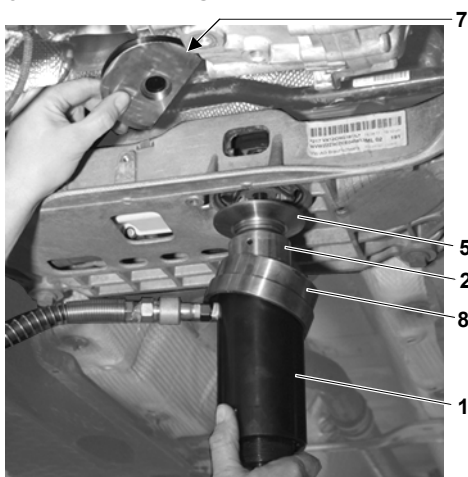
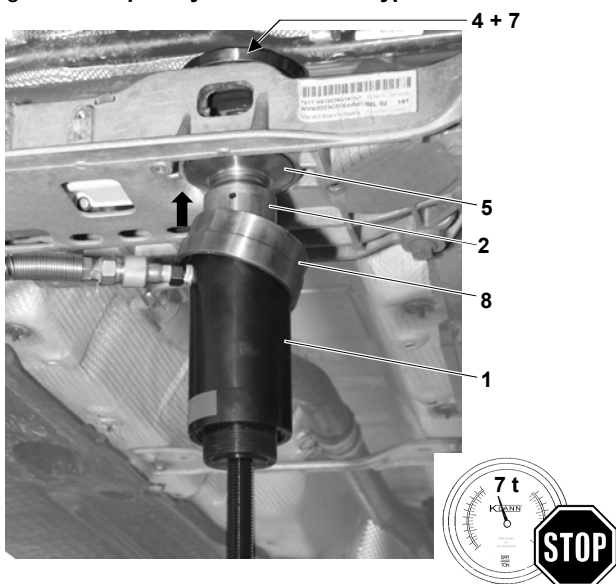


Fig. 16: Completely install double-type silentbloc.



4. Connect hydraulic cylinder "1" to hydraulic pump (accessory).

5. **⚠ DANGER**

When installing double-type silentblocs, there is the risk that the pull spindle could break and fall to pieces. This will lead to parts or the tool becoming projectiles.

- Observe and do not exceed the maximum load capacity of the pull spindle.
- Use hydraulic pump with pressure gauge **KL-0040-2529**.
- Only use Original KLANN spare parts.
- Always keep all parts of your body away from the axial extension of the pull spindle.
- Make sure that the hydraulic cylinder is always being maintained in a vertical position during the installation process, in order to prevent the silentbloc from tilting or jamming.

Operate hydraulic pump and install double-type silentbloc in two work steps. (Fig. 14)

During the first work step, read the required force on the pressure gauge of the hydraulic pump. Observe and do not exceed the maximum load capacity of the pull spindle.

Remember that the working stroke of the hydraulic cylinder is 45 mm. Therefore, it could be necessary to re-position the pull spindle during the installation process.

As soon as you notice high pressure on the pump lever, open pump release valve (piston of hydraulic cylinder returns to its zero-position). Then, close pump valve, turn back pull spindle "3" until conical sleeve "8" rests against assembly carrier and continue installation process.

Note:

- If, during the second piston stroke, the pull spindle makes a move rearwards, release pressure on hydraulic cylinder, tighten clamp screw a 1/4-revolution and continue installing the silentbloc.
- The conical sleeve will become loose and fall onto the hydraulic cylinder as soon as the lower half of the double-type silentbloc has been installed.

Stop the first work step of the installation process as soon as the conical sleeve "8" is loose.

6. Remove clamping device before proceeding with the second work step of the installation process. Release pressure on hydraulic cylinder and turn setting plate "7" upside down so that the **flat side of the plate faces downwards**. (Fig. 15) Screw shoulder nut onto pull spindle so that they are flush with each other.

7. **⚠ DANGER**

When installing double-type silentblocs, there is the risk that the pull spindle could break and fall to pieces. This will lead to parts or the tool becoming projectiles.

- Observe and do not exceed the maximum load capacity of the pull spindle.
- Use hydraulic pump with pressure gauge **KL-0040-2529**.
- Only use Original KLANN spare parts.
- Always keep all parts of your body away from the axial extension of the pull spindle.

Operate hydraulic pump and continue installing the double-type silentbloc.

(Fig. 16) Stop the second work step of the installation process as soon as the double-type silentbloc has reached its specified position. During the second work step of the installation process, read the required force on the pressure gauge of the hydraulic pump. Observe and do not exceed the maximum load capacity of the pull spindle.

8. Remove tool, check position of the double-type silentbloc and reassemble vehicle according to the manufacturer's directions and instructions.

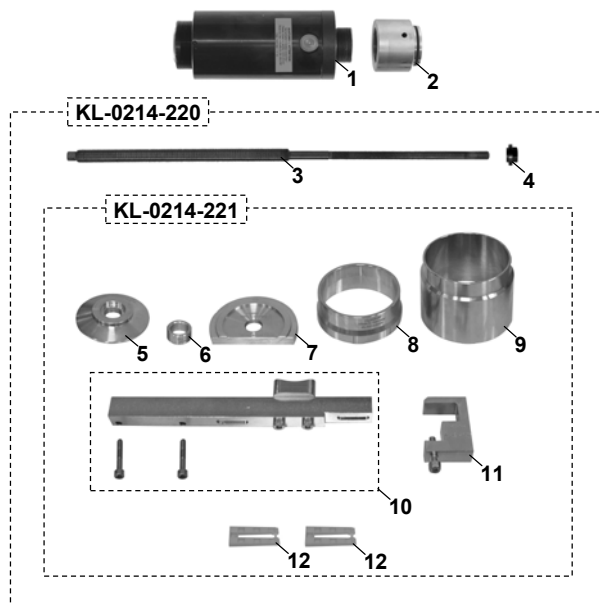
Fig. 17: Accessory: KL-0215-35 M25



Fig. 18: Accessory: KL-0040-2590



Fig. 19: Spare parts: KL-0214-22



5. Care and Storage

ATTENTION: Petroleum ether and chemical solvents can damage plastic parts. Always clean all parts after their use with a clean cloth only.

In order to protect against corrosion, lightly lubricate all metal parts after their use and store them in a clean and dry place.

6. Accessories

KL-0215-35 M25 Hydraulic Hand Pump

The hydraulic hand pump **KL-0215-35 M25** is used to drive the hydraulic cylinder **KL-0040-2500**.

Note: The hydraulic pressure and necessary force can be checked while operating the pump at pressure gauge **KL-0040-2529** (supplied with the tool set). The pressure gauge features an additional tonne scale matching our **KL-0040-2500** hydraulic cylinder (17 t).

KL-0040-2590 Safety Belt

By fastening the safety belt **KL-0040-2590** to the vehicle and to the hydraulic cylinder **KL-0040-2500**, the latter is prevented from falling.

7. Maintenance and Repair by the KLANN Service Centre

For safety reasons, as soon as damage is noticed on the pulling device, immediate steps must be taken to prevent it from being used. For professional checking and repair of the tool, please contact the KLANN Service Centre.

Address:

KLANN Spezial-Werkzeugbau-GmbH

Breslauerstraße 41

DE-78166 Donaueschingen

Phone: +49 (0)771 83 22 371

Email: service.de@klann-online.de

For additional information concerning the use of our pulling device, please contact the KLANN Service Centre.

8. Spare Parts List

Pos.	Part No.	Description	Qty.
	KL-0214-22	Pulling device for double-type silentbloc VW, front axle, with hydraulic cylinder	1
<i>Consists of:</i>			
	KL-0214-220	Pulling device for double-type silentbloc VW, front axle, without hydraulic cylinder	1
1	KL-0040-2500	Hydraulic cylinder 17 t	1
2	KL-0039-1003	Retainer adaptor for hydraulic cylinder	1
	KL-0214-220	Pulling device for double-type silentbloc VW, front axle, without hydraulic cylinder	1
<i>Consists of:</i>			
	KL-0214-221	Pulling device for double-type silentbloc VW, front axle, without drive	1
3	KL-0039-1912-1	Pull spindle M12	1
4	KL-0039-1912-3	Shoulder nut M12 (flat), waf 19 mm	1
	KL-0214-221	Pulling device for double-type silentbloc VW, front axle, without drive	1
<i>Consists of:</i>			
5	KL-0214-2201	Pressure piece, Ø89.5 mm	1
6	KL-0214-2202	Spacer ring Ø30 mm	1
7	KL-0214-2203	Setting plate	1
8	KL-0214-2204	Conical sleeve Ø90 mm	1
9	KL-0214-2205	Support sleeve Ø92.7 mm	1
10	KL-0214-2207	Clamping device	1
11	KL-0214-2206	Clamp with screw	1
12	KL-0124-2208	Set of plastic wedges	1

9. Environmentally Safe Disposal

Dispose of the pulling device and its packaging material in compliance with the legal rules and regulations in force.