

Christoffer Bergström
Committed



Workshop
Interior





”Only the best works”

Everything in its place. This is why we at PZB can offer our customers a professional service, while working efficiently, safely and profitably. Only the best works for me.

Arash Adib, Founder and MD, PBZ

[The tool trolley in the picture is part of the Kamasa Tools customized Choice product range.]

Complete workshop interior

With our module-based workshop interiors, you can build a more efficient workshop which perfectly suits your own space and needs. If you'd rather devote more time to customers, choose our complete interiors for a rapid and simple solution. The drawers are suitable for tool kits from our Choice product range. Designed for one technician per station, our stable, self-supporting workshop interiors have perforated panels for hanging tools, with square holes to industry standard. Choose between worktops in stainless steel or fully bonded oak. The cabinets will support a load of 45 kg per drawer and the top cabinet lid has gas-spring dampers and a hinged top. Of course, you can always extend and add elements later.



2 sections

1 × cabinet with 7 × drawers, 1 × cabinet with shelf and 2 × top cabinets.

Width: 1725 mm
Height: 1980 mm
Depth: 546 mm
Max. load per drawer: 45 kg
Color: RAL 9006

K 11340

Stainless steel worktop

K 11355

Worktop in fully bonded oak



3 sections

2 × cabinets, 1 × trolley with castors and 3 × top cabinets. The left cabinet has 3 × drawers and cabinet unit with shelf. The trolley and the right base each have 7 drawers.

Width: 2215 mm
Height: 1980 mm
Depth: 546 mm
Max. load per drawer: 45 kg
Max. load per trolley: 315 kg
Color: RAL 9006

K 11360

Stainless steel worktop

K 11365

Worktop in fully bonded oak

Modular interior

Our modular interior gives you unlimited possibilities for building your own unique workshop. The tool cabinet and tool trolley have a stable construction with an internal frame, and the drawers intended for tool kits are fully extendable on heavy-duty, ball-bearing mounted rails. All drawers have also been endurance-tested with 45 kg load over 50,000 cycles. With full control over your tools, your workshop will be more efficient.



Tool cabinet, 7 drawers, gray

Fitted with 7 × drawers each holding 4 × tool kits.

K 11315

Max. load per drawer: 45 kg
Max load for entire cabinet: 720 kg
Dimensions H×W×D:
954 × 861 × 500 mm
Drawer dimensions H×W×D:
75/154 × 763 × 410 mm
Weight: 63 kg
Color: RAL 9006

K 11316

Max. load per drawer: 45 kg
Max load for entire cabinet: 700 kg
Dimensions H×W×D:
954 × 677 × 500 mm
Drawer dimensions H×W×D:
75/154 × 566 × 410 mm
Weight: 53 kg
Color: RAL 9006



Tool cabinet, 3 drawers and cabinet, gray

Fitted with 3 × drawers each holding 3 × tool kits. The lower part of the cabinet has a storage space with door.

K 11318

Max. load per drawer: 45 kg
Dimensions H×W×D: 954 × 861 × 500 mm
Drawer dimensions H×W×D: 75/154 × 763 × 410 mm
Weight: 50 kg
Color: RAL 9006



Tool trolley, 7 drawers, gray

Fitted with 7 × drawers each holding 4 × tool kits. All drawers have a transport lock in the closed position so that the cabinet can be moved without the drawers extending. Large bearing-mounted castors (TPR), two with brake function, 127 × 50 mm. Includes heavy duty rubber mat for the workspace and thinner mats for all drawers. The trolley is endurance-tested with 300 kg load on a rolling vibrating track for 20 km.

K 11319

Max. load per drawer: 45 kg
Max load for entire trolley on castors: 700 kg
Trolley dimensions (inc. castors) H×W×D: 936 × 833 × 459 mm
Drawer dimensions H×W×D: 75/154 × 566 × 410 mm
Weight: 60 kg
Color: RAL 9006





Cabinet with doors, gray

Stable construction with internal frame. 1 x adjustable shelf.

K 11317

Dimensions H×W×D: 954 × 861 × 500 mm

Weight: 42 kg

Color: RAL 9006



Hose cabinet

Strong powder-coated construction. Drop plate in stainless steel.

K 11354

Cabinet for 3 x hose reels

Dimensions H×W×D: 954 × 861 × 500 mm

Weight: 47.4 kg

Color: RAL 9006

K 11353

Cabinet for 2 x hose reels

Dimensions H×W×D: 954 × 676 × 500 mm

Weight: 36.3 kg

Color: RAL 9006



Corner cabinet

Enables a corner workplace to be built.

1 x adjustable shelf.

K 11331

Dimensions H×W×D: 954 × 883 × 883 mm

Weight: 51 kg

Color: RAL 9006



Recycling cabinet

Stable construction and fully extendable drawer for recycling containers, with double, heavy-duty, ball-bearing mounted rails. 3 x sheet steel recycling containers.

K 11343

Max. load: 60 kg

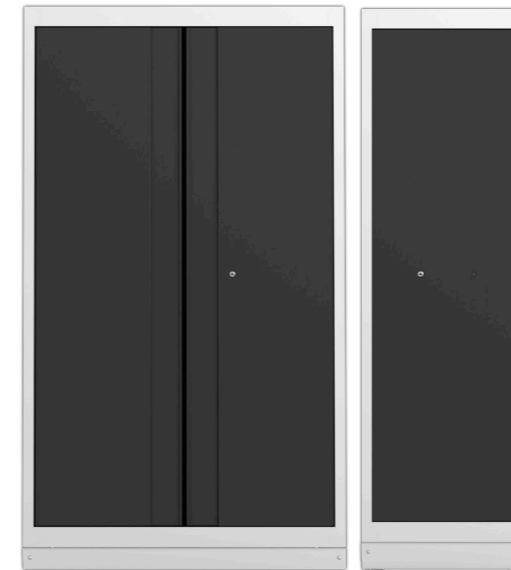
Outer dimensions H×W×D: 945 × 861 × 500 mm

Drawer dimensions H×W×D: 2 x 460 × 180 × 360 mm,

1 x 460 × 360 × 360 mm

Weight: 47 kg

Color: RAL 9006



Clothes and storage cabinet

Wall cabinet with 3 x shelves, 2 of which are adjustable, and 1 x rail for coat hangers.

K 11333

Dimensions H×W×D: 1983 × 1120 × 526 mm

Weight: 70 kg

Color: RAL 9006

K 11332

Dimensions H×W×D: 1980 × 600 × 526 mm

Weight: 59 kg

Color: RAL 9006



Materials cabinet

High cabinet with 4 x adjustable shelves. Each shelf can support a load of 60 kg.

K 11375

Dimensions H×W×D: 2000 × 1000 × 525 mm

Weight: 66 kg

Color: RAL 9006

K 11376

Dimensions H×W×D: 2000 × 540 × 525 mm

Weight: 43 kg

Color: RAL 9006



Top corner cabinet

Suitable for corner cabinet K 11331. Enables a corner workplace to be built. Lid with gas-spring dampers and a hinged top.

K 11344

Dimensions H×W×D: 342 × 883 × 883 mm

Weight: 17 kg

Color: RAL 9006



Top cabinet

Suitable for workbench. Lid with gas-spring dampers and a hinged top.

K 11320

Dimensions H×W×D: 342 × 861 × 300 mm

Weight: 12 kg

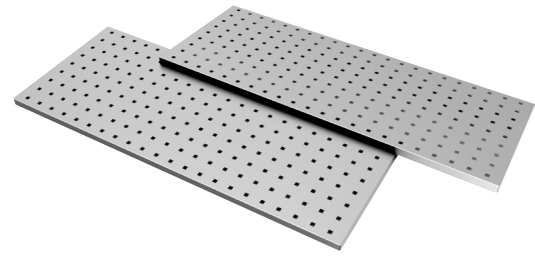
Color: RAL 9006

K 11321

Dimensions H×W×D: 342 × 677 × 300 mm

Weight: 9.5 kg

Color: RAL 9006



Perforated panel, gray

Perforated panel for hanging tools. 9.2 mm hole, center spacing 38 mm. Square holes with a hole pattern to industry standard.

K 11322

Dimensions H×W×D:
338 × 861 × 20 mm
Weight: 6.5 kg
Color: RAL 9006

K 11323

Dimensions H×W×D:
338 × 677 × 20 mm
Weight: 5 kg
Color: RAL 9006



Shelf set for cabinet

The set consists of 2 × shelves with brackets.

K 11370

Dimensions W×D: 600 × 525 mm

K 11371

Dimensions W×D: 1120 × 525 mm

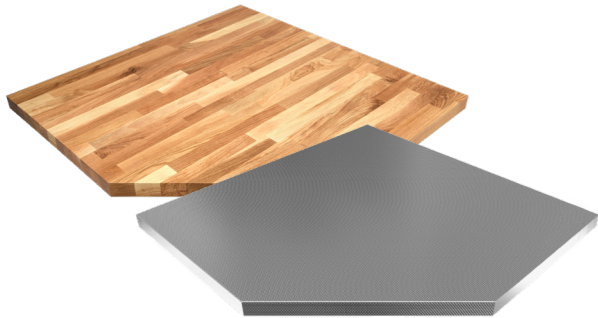


Shelf for corner cabinet

Extra shelf suitable for corner cabinet K11331.

K 11334

Dimensions H×W×D: 13 × 538 × 853 mm



Worktop for corner cabinet

Suitable for corner cabinet K 11331.

K 11335

Worktop in fully bonded oak
Dimensions H×W×D:
40 × 863 × 863 mm

K 11336

Stainless steel worktop
Dimensions H×W×D:
40 × 863 × 863 mm



Worktop, stainless steel

Stainless steel top for work surface.

K 11327

Dimensions H×W×D:
40 × 2215 × 500 mm

K 11326

Dimensions H×W×D:
40 × 2215 × 500 mm



Worktop, oak

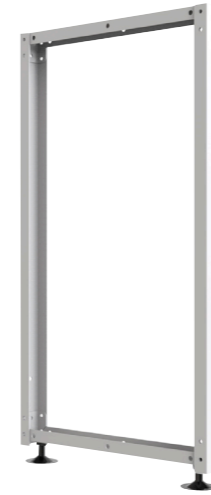
Worktop in fully bonded oak for work surface.

K 11329

Dimensions H×W×D:
40 × 2215 × 500 mm

K 11328

Dimensions H×W×D:
40 × 1725 × 500 mm



Support leg for worktop

Enables a free-standing workbench to be built with any worktop.

K 11339

Dimensions H×W×D: 923 × 61 × 500 mm



Support bracket

Support bracket for perforated panel and top cabinet.

K 11325

2 × support brackets.
Dimensions H×W×D:
2000 × 90 × 30 mm
Weight: 8 kg
Color: RAL 9006

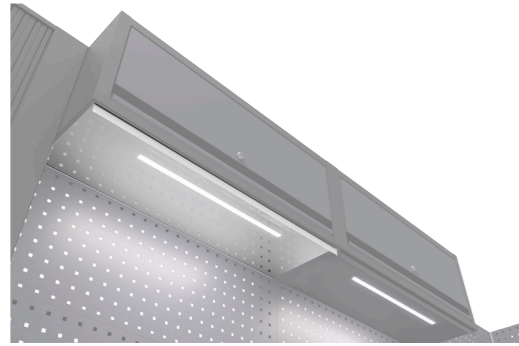
K 11324

1 × support bracket.
Dimensions H×W×D:
2000 × 146 × 30 mm
Weight: 5 kg
Color: RAL 9006



Modular interior accessories

Modular interior accessories are simple but important details which help you design the most comfortable, efficient and practical workplace. A suitable light unit below the top cabinet gives you more comfort during the working day, and a wide choice of tool holders ensures rapid access to the tools you use most.

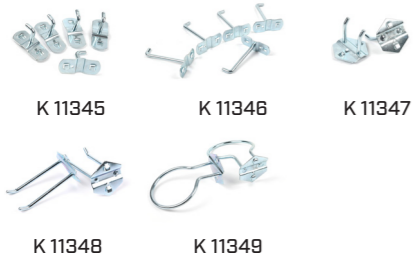


Lighting unit

The lighting is attached to the underside of the top cabinet and gives a comfortable working light over the worktop.

K 11338
Dimensions H×W×D:
23 × 665 × 298 mm

K 11337
Dimensions H×W×D:
23 × 839 × 298 mm



Straight hangers

Tool holders for tool trolleys and tool boards with square 9.2 mm holes and 38 mm spacing to industry standard.

K 11345 25 mm, 5-pack
K 11346 75 mm, 5-pack
K 11347 50 mm, 2-pack
K 11348 100 mm, 2-pack
K 11349 80 mm, 2-pack

Square hanger, 23 × 55 mm, 5-pack

K 11350
Tool holders for tool trolleys and tool boards with square 9.2 mm holes and 38 mm spacing to industry standard.



Lower side panel for cabinet

Conceals the support leg and creates a uniform appearance.

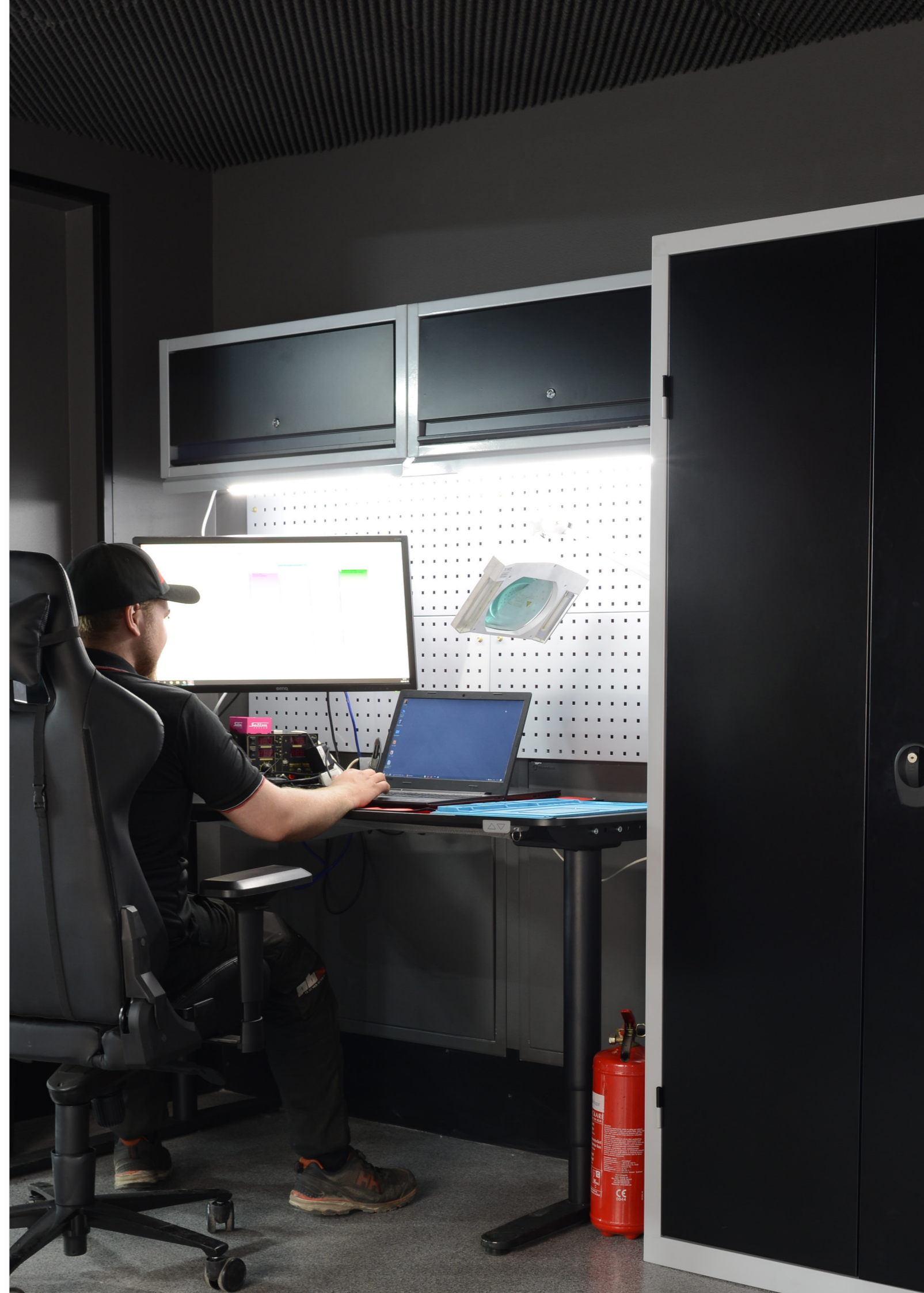
K 11342
Dimensions H×W×D: 90 × 472 × 10 mm

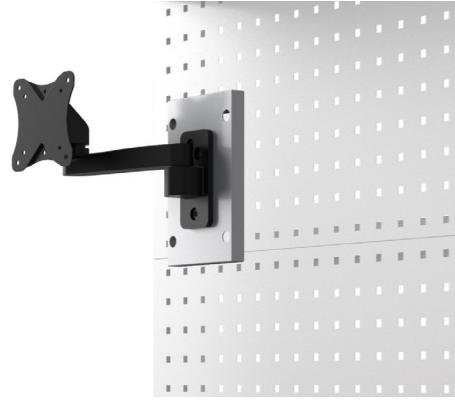


Lower side panel for clothes and storage cabinet

Conceals the support leg and creates a uniform appearance.

K 11341
Dimensions H×W×D: 90 × 498 × 10 mm





Screen bracket

Fitted with an jointed arm with a load capacity of 6 kg.

K 11385

Dimensions B×H×D: 138 × 215 × 285 mm

Weight: 3 kg

Color: Black



Power outlet panel

Designed for cabinet width 677 mm. Equipped with main circuit breaker, 3 × power outlets for Euro plugs, 4 × USB 2.0 sockets, 2 m long connecting cable and protective cover.

K 11386

Dimensions H×W×D: 342 × 677 × 116 mm

Weight: 3.9 kg

Color: RAL 9006



Power outlet panel

Designed for cabinet width 861 mm. Equipped with main circuit breaker, 3 × power outlets for Euro plugs, 4 × USB 2.0 sockets, 2 m long connecting cable and protective cover.

K 11387

Dimensions H×W×D: 342 × 861 × 116 mm

Weight: 4.7 kg

Color: RAL 9006



Other workshop equipment

Here you can find equipment and accessories to simplify working in all types of workshops regardless of brand, size or specialty. Robust products with the same authentic quality which has always distinguished Kamasa Tools' philosophy and product range. Like every professional technician, we aim to give our customers the very best.

Kamasa Tools – for the committed.



We have many different tool holders which fit tool boards with round holes. For more information see www.kamasatools.com

Tool boards with round holes

Perforated board with round holes with 4.2 mm diameter and 12 mm center spacing. Flanged edges give the board rigidity.

K 11380

Plate thickness: 1.25 mm
Outer dimensions: 960 × 480 mm
Weight: 4.5 kg
Color: RAL 9006

K 11381

Plate thickness: 1.25 mm
Outer dimensions: 960 × 980 mm
Weight: 8.5 kg
Color: RAL 9006

K 6434

Plate thickness: 1.00 mm
Outer dimensions: 960 × 1480 mm
Weight: 12.5 kg
Color: RAL 9006

Tool boards with square holes

Perforated board with square holes with 8.8 mm diameter and 38.5 mm center spacing. Flanged edges give the board rigidity.

K 11382

Plate thickness: 1.25 mm
Outer dimensions: 960 × 480 mm
Weight: 4.5 kg
Color: RAL 9006

K 11383

Plate thickness: 1.25 mm
Outer dimensions: 960 × 980 mm
Weight: 8.5 kg
Color: RAL 9006

Mounting set for tool board

K 6432

Used to secure the board to the back of the workbench, e.g. K 6429

Tool hangers, set

K 5147

A set of tool holders for the most common tools.



Holder for sockets

K 26100

Socket holder with aluminum rails and plastic holders with spring-loaded steel balls.



Shelf trolley, 3 shelves

Heavy-duty shelf trolley with 3 × shelves and high side walls. Large bearing-mounted rubber wheels, 2 with brake function. Max load per shelf: 50 kg.

K 6480

Loading surface: 680 × 460 mm
Height: 820 mm
Color: RAL 9006



Rubber mat

Black rubber mat with good resistance to oil and grease. 2 mm thick.

K 6427

Dimensions L×W: 1500 × 700 mm



Workbench

Stable workbench for heavy jobs and high stress loads. Sound-damping and vibration-absorbing acoustic worktop with adjustable legs.

K 6429

Dimensions H×W×D: 750-950 × 1500 × 700 mm
Color: RAL 9006

