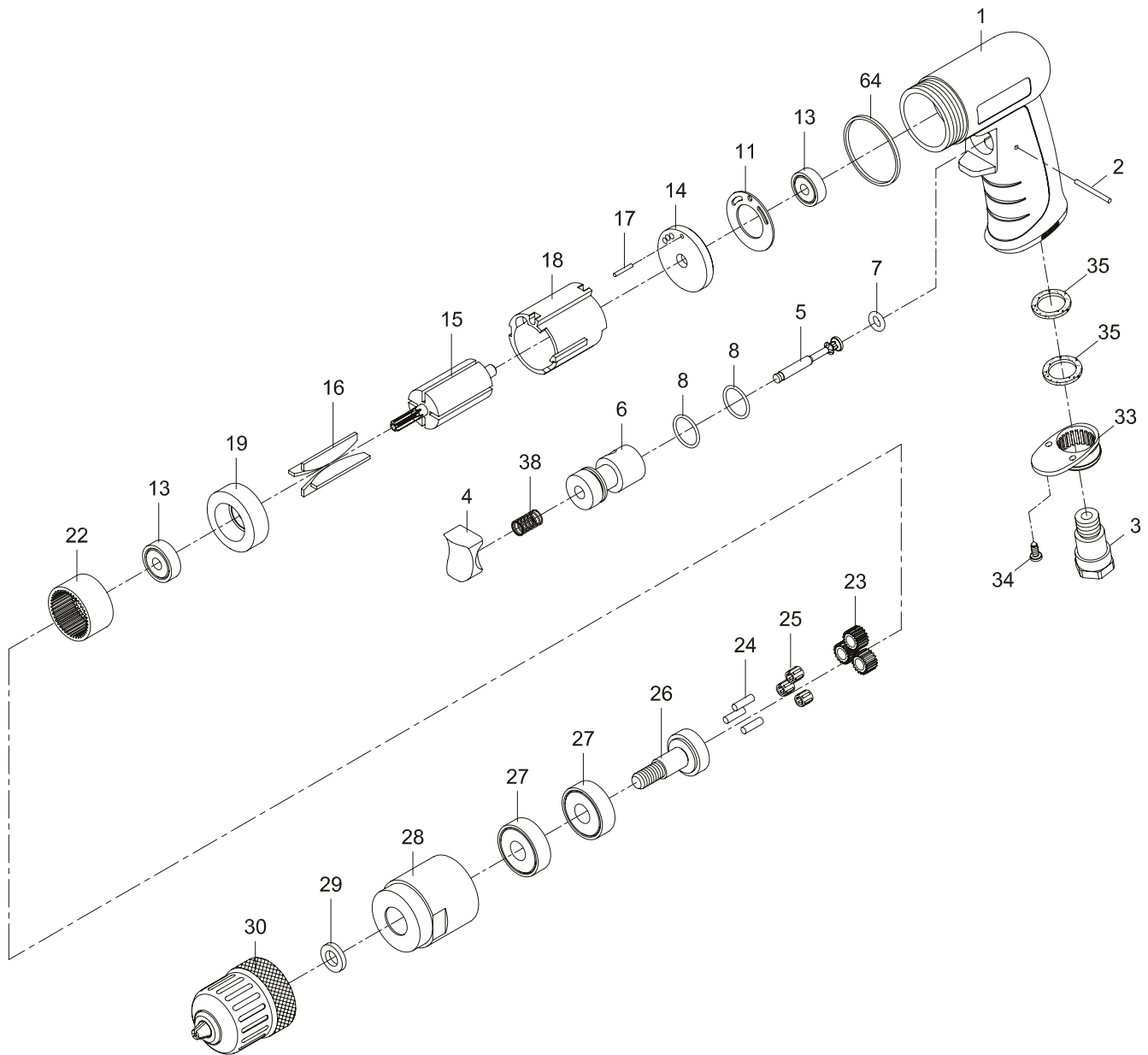


# 3/8" Air drill

K 9814



**KR 9814-1** Engine repair kit: Pos 2, 7, 8, 11, 16, 38, 64

**KR 9814-2** Gearing repair kit: Pos 11, 13, 27, 64

**KR 9814-3** Industrial keyless chuck 3/8"

**KR 9814-4** Throttle set: Pos 2, 4, 5, 7, 38

**KR 9814-5** Air inlet kit: Pos 3, 33, 35

Pos.	Parts No.	Description
1		Motor housing
2	KR 9814-1, KR 9814-4	Pin
3	KR 9814-5	Air inlet
4	KR 9814-4	Trigger
5	KR 9814-4	Valve stem
6		Valve bushing
7	KR 9814-1, KR 9814-4	O-ring
8	KR 9814-1	O-ring (2 pcs.)
11	KR 9814-1, KR 9814-2	Motor gasket
13	KR 9814-2	Ball bearing (2 pcs.)
14		Rear end plate
15		Rotor
16	KR 9814-1	Rotor blade (4 pcs.)
17		Spring pin
18		Cylinder

Pos.	Parts No.	Description
19		Front end plate
22		internal gear
23		Planet gear (3 pcs.)
24		Pin (3 pcs.)
25		Needle bearing (3 pcs.)
26		Work spindle
27	KR 9814-2	Ball bearing (2 pcs.)
28		Clamp nut
29		Washer
30	KR 9814-3	Industrial keyless chuck 3/8"
33	KR 9814-5	Exhaust diffuser
34		Screw (2 pcs.)
35	KR 9814-5	Damping material (2 pcs)
38	KR 9814-1, KR 9814-4	Valve spring
64	KR 9814-1, KR 9814-2	Decoration ring