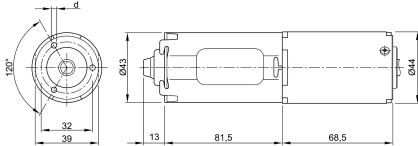


Design Data	
Commutation	brushed
Direction of rotation	bidirectional
Bearing Type	sleeve bearing

**0231 B**



Performance data		
Nominal Voltage [V]	$U_N$	24
Nominal Torque [Nm]	$M_N$	4,00
Nominal Speed [ $\text{min}^{-1}$ ]	$n_N$	166,667
Nominal Power [W]	$P_N$	69,8
Nominal current [A]	$I_N$	8,0
Nominal force [kN]	$F_N$	0,00
Duty cycle		s2

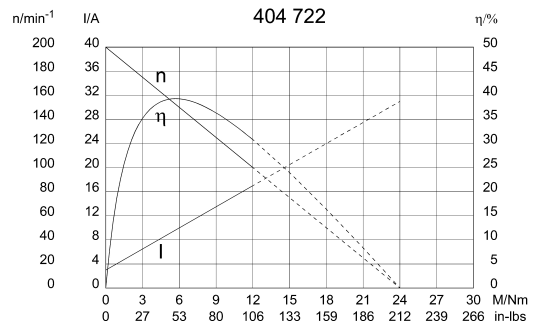
Sensor data	
Pulses	39
Output channels	2

Other data	
Gear ratio	39.7/1
Gear wheel material	plastic
Suppression components	4,0 $\mu$ H, 1nF
Enclosure class	IP 30
Weight [kg]	0,650

Remarks:  
d = 3,3mm, for self-cutting screw 4mm

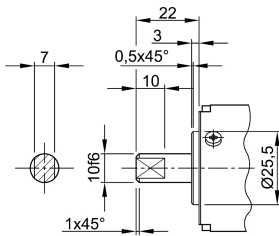
**Characteristic Curves**

**Motor picture**

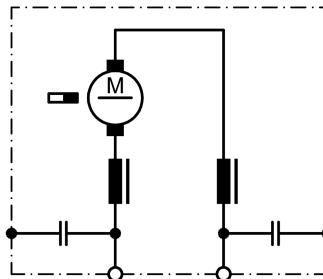


**Output shaft drawing (W), Wiring diagrams (S) and Connector layout (K)**

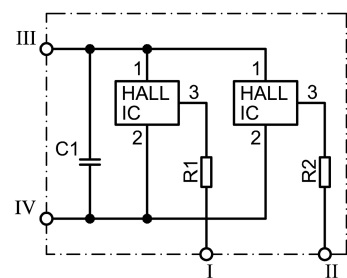
**W 249**



**S 30**



**S 109**



- I Terminal 1, OUT A1, grey
- II Terminal 2, OUT A2, black
- III Terminal 3, +, white
- IV Terminal 4, -, red

