



Timing belt manufacturing

Product Information – October 2012



ALL



Timing belt manufacturing



Timing belt stitched/welded joints

According to the OE production specifications, the manufacturing process of joining the belt fabric can be either a 'stitched joint' or a 'welded joint' on the belt backing or inside the belt.

Sometimes, it is possible that some belt joints are more visible than others. In addition, some belts have several joints on the belt.

These belt joints are absolutely not a defect. They do not compromise on the timing belt performance!

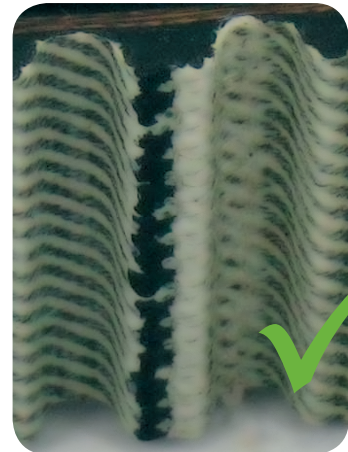
Examples of different stitched/welded joints.



Timing belt in HSN construction.



PTFE belt with a fabric applied on the belt backing.



PTFE belt with a fabric applied on the belt backing.

Note! Do not try to examine the stitched area by bending the belt. The belt should never be crimped as it could damage the glass fiber.

© SKF is a registered trademark of the SKF Group.

© SKF Group 2012
The contents of this publication are the copyright of the publisher and may not be reproduced (even extracts) unless prior written permission is granted. Every care has been taken to ensure the accuracy of the information contained in this publication but no liability can be accepted for any loss or damage whether direct, indirect or consequential arising out of the use of the information contained herein.

