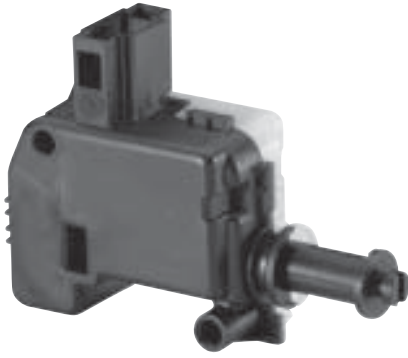


SENSORS



Electromotive actuators, electrical locking/
unlocking & closing (medium force)

Electrical retraction & extension with
mainspring

Part no. 6NW 009 203-461

TECHNICAL SPECIFICATIONS

Position on delivery	extended
Mainspring reset	extend
Weight	90 g
Rated voltage	12 V
Voltage range	9 V to 15 V
Maximum power consumption	10.5 A
Idling current	545 mA
Actuating force at the positioning mechanism (at 80°C and 9 V)	30 N
Manual adjustment	none
Actuating time for 18 mm stroke ¹⁾	max. 400 ms
Thermal overload protection	via PolySwitch (PTC)
Operating temperature	- 40 °C to + 80 °C
Storage temperature	- 40 °C to + 90 °C
Service life	50,000 switching cycles
Conducted electromagnetic interference	< 75 V
Interference suppression (in all fields)	Intensity level 1 + 10 dB μ V
Functional stroke	\leq 18 mm
Protection class	IP 5K0
Vibration resistance	2.7 g eff.
Housing material (upper side)	Polyamide 6 GF15
Housing material (bottom side)	Polyamide 6 M25 GF15
Pin coating	Tin
Mating connector ²⁾	1355390-1

¹⁾ At the positioning mechanism over the operating voltage and temperature range.

²⁾ This accessory is not included in the scope of delivery. It may be purchased from Tyco Electronics.

TECHNICAL DRAWING

