

Kamasa-TOOLS®

Videoscope

K 12101



CE

INTRODUCTION

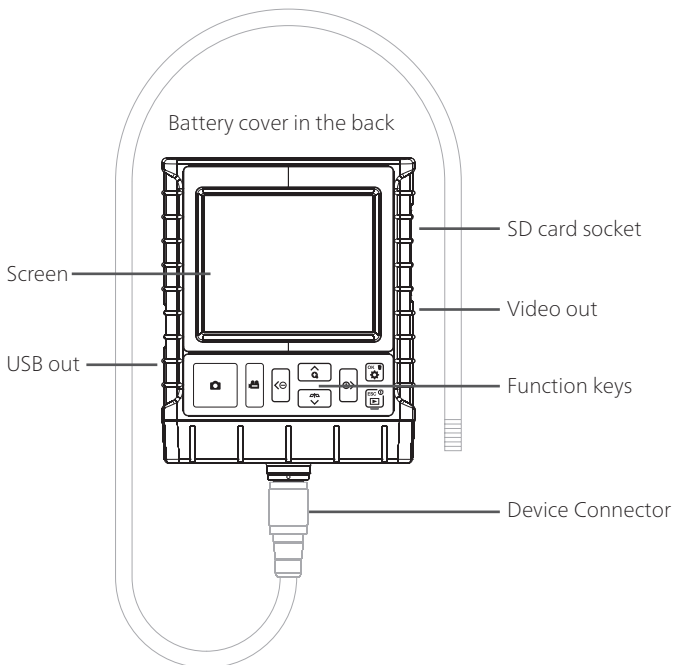
This videoscope with its compact design and 3.5 inch screen is a perfect help in any workshop when inspecting areas that normally are hidden for the eye. Read through this manual to learn about the features of this videoscope and how to maximize its benefits in your daily work.

SAFETY AND PRECAUTION

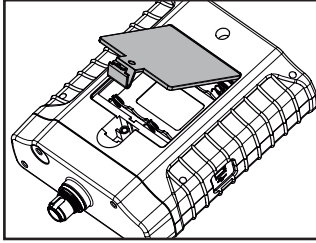
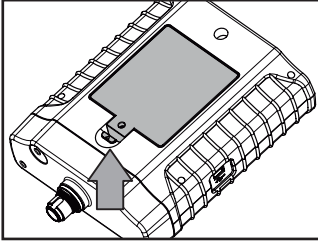
- To avoid danger, do not insert the probe into any area containing flammable liquid or gas such as fuel tanks.
- The rubber cover over the sockets for USB and SD card shall always be kept closed to avoid obstructive dirt from entering the instrument.
- In order to avoid damage to the probe, never bend it more than 180° and try to make bending arcs as large as possible.
- This product is designed for industrial use only. Never use the system for human or any other biological inspection.
- Do not remove the SD card when capturing photos and videos. This will cause a loss of information and the risk of damaging the SD card.
- Video recording requires an SD card with fast writing speed. We recommend 80X or more for better video quality.
- Use the cleaning set included at the delivery or other non alcoholic cleaning liquid.
- Please use only recommended component or accessories. Unapproved accessories and components may cause damage.

PRODUCT SPECIFICATION

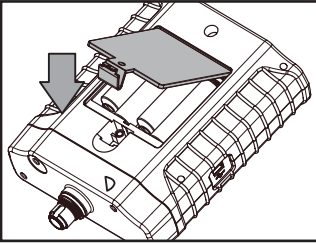
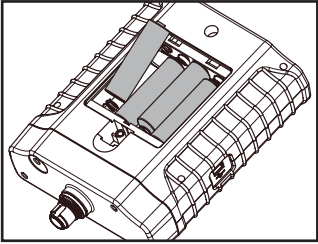
Main system	
System dimension	140×116×42 mm
System weight	300g (w/o battery)
Display	3.5" TFT LCD QVGA
Display resolution	320×240 pixels
Power	AA×4 (Alkaline or Ni-HM)
Battery life	4 hours
Recording medium	SD CARD (Support to 32G)
Video out format	NTSC & PAL
Interface	AV out
File format	AVI, JPEG
Video resolution	320×240, 30 FPS
Image resolution	640×480 pixels
Water proof	Splash water (the rubber component covers should be closed)
Working temperature	0°C~60 °C
Storage temperature	0°C~60 °C



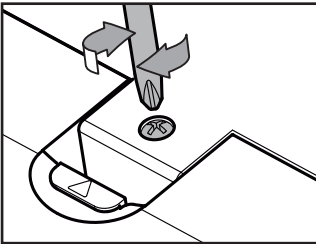
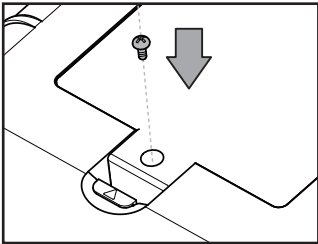
GETTING STARTED



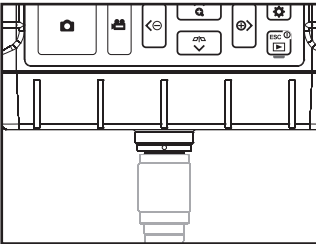
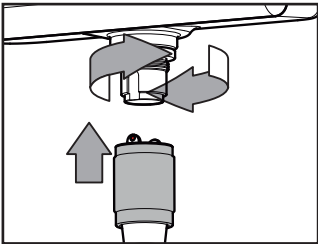
Step 1: Remove the battery cover.



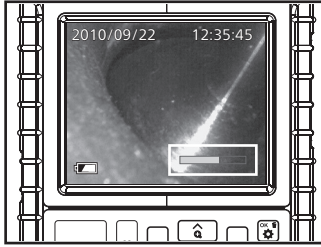
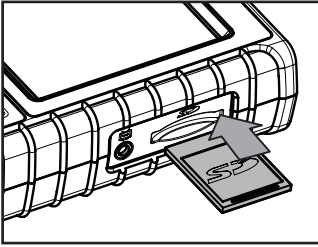
Step 2: Place battery correctly, put the battery cover back.



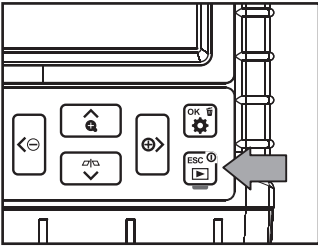
Step 3: Tighten the screw.




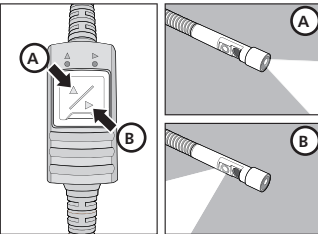
Step 4: Connect probe to the system and tighten it up clockwise. The color markings shall coincide.



Step 5: Insert SD memory card correctly, the screen will then show memory card capacity while the system is turned on.

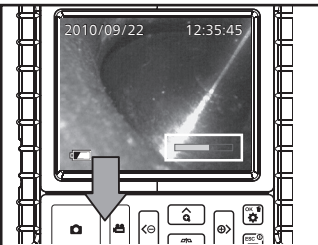


Step 6: Press  power button for 3 seconds to turn on the system.



Step 7: The camera in the probe can be directed forward or 90° sideways.









- Press the button marked A on the illustration for forward camera.
- Press the button marked B on the illustration for side view camera.

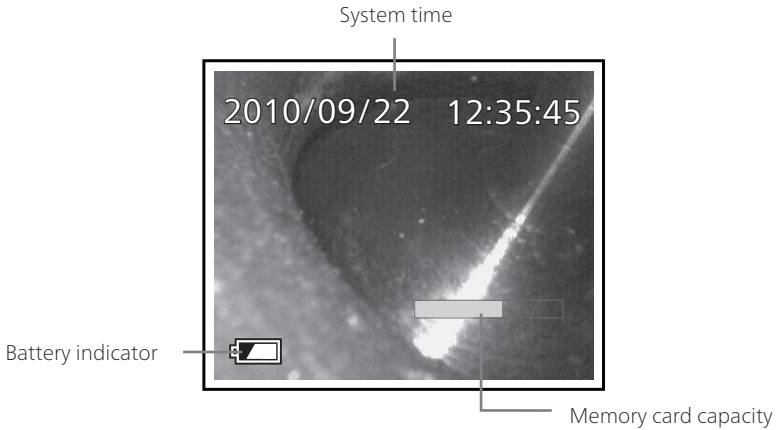


Step 8: After the system is turned ON, you can start your inspection.

Press the snap or record button to get an image or video file.

MULTIFUNCTION KEYS

Key	Preview	Browse	Menu
	Increase brightness	Right	N/A
	Decrease brightness	Left	N/A
	Enter "Menu" mode	Delete	Execute confirm instruction
	Zoom-in	Up	Up
	Mirror	Down	Down
	Enter "Browse" mode	Return to "Preview" mode	Return to "Preview" mode
	Snapshot	Play video / Pause	N/A
	Record video	N/A	N/A



SYSTEM MODE

This system provides 3 easy-to-operate modes:

Preview: This mode is activated when the system turn on.

Browse: The user may view recorded pictures and videos and conduct basic file management.

Menu: Use this mode to change system settings.

Note: Under the "Menu" mode, the system will automatically return to the "Preview" mode in 3 minutes if no action is made.

SYSTEM MENU



Step1: Press  to enter the Menu mode.

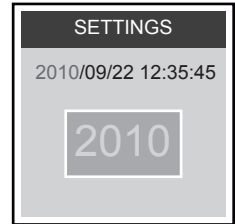
Step2: Press  or  to choose the item you need.

Step3: Press **OK** to enter.

Instructions which can be executed on the menu are listed as below:

Delete All Files





After initiating this command, select "yes" or "no" by pressing  or  buttons. To delete all, select "yes" press the **ESC** button to exit.



AV Output

This command will send the video signal out through the AV port. The screen of the device will turn black until you execute this command again.

Date / Time

- Format: Set up the sequence of day, month, year.
- Setting: Set the device's time.
 - Step1: Press  or  button to choose day, month or year to be changed.*
 - Step2: Press the button  or  to adjust figures.*
- Display: Press "Yes" to show up the time on Preview mode.

Language

To set up operation language.

TV System


Set video format, NTSC or PAL.

Auto Power Off

Set up auto power off in 5, 10, 15 or 30 minutes, or you can disable the "Auto power off" function by selecting "Off".

OPERATION INSTRUCTIONS

Zoom-in & Mirror

Zoom-in: Press  to enlarge the image, press again to enlarge more, and press it again to the default image setting.

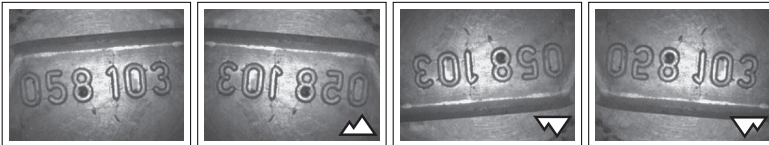


Default image

Enlarged 3x

Enlarged 5x

Mirror: Press  to mirror the image. Press it again to rotate the image.





Default image

Mirror


Upside down

Mirror and Upside down


Adjust the brightness

Press  or  to adjust brightness.

Taking Photos

Press  button during Preview mode to take the photo. If the bottom of the screen displays the file name, then your file is properly saved.


Video Recording

Press  button during Preview mode to record the video, press again to stop recording. In the recording process, the recording time is displayed on the screen. If the bottom of the screen displays the file name (.avi), then your file is properly saved.

Viewing photos/videos

Step 1: Press  to enter the Browse mode.

Step 2: Press  or  to view the previous or second to last photo/video.

Step 3: Press  to delete a file, press **OK** again to confirm or press **ESC** to cancel.

Step 4: Press  to play a video.



Kamasa Tools is a registered trademark of KG Knutsson AB, 191 81 Sollentuna, Sweden
CE declaration for this product is available as a file on www.kamasatools.com

K 12101

www.kamasatools.com