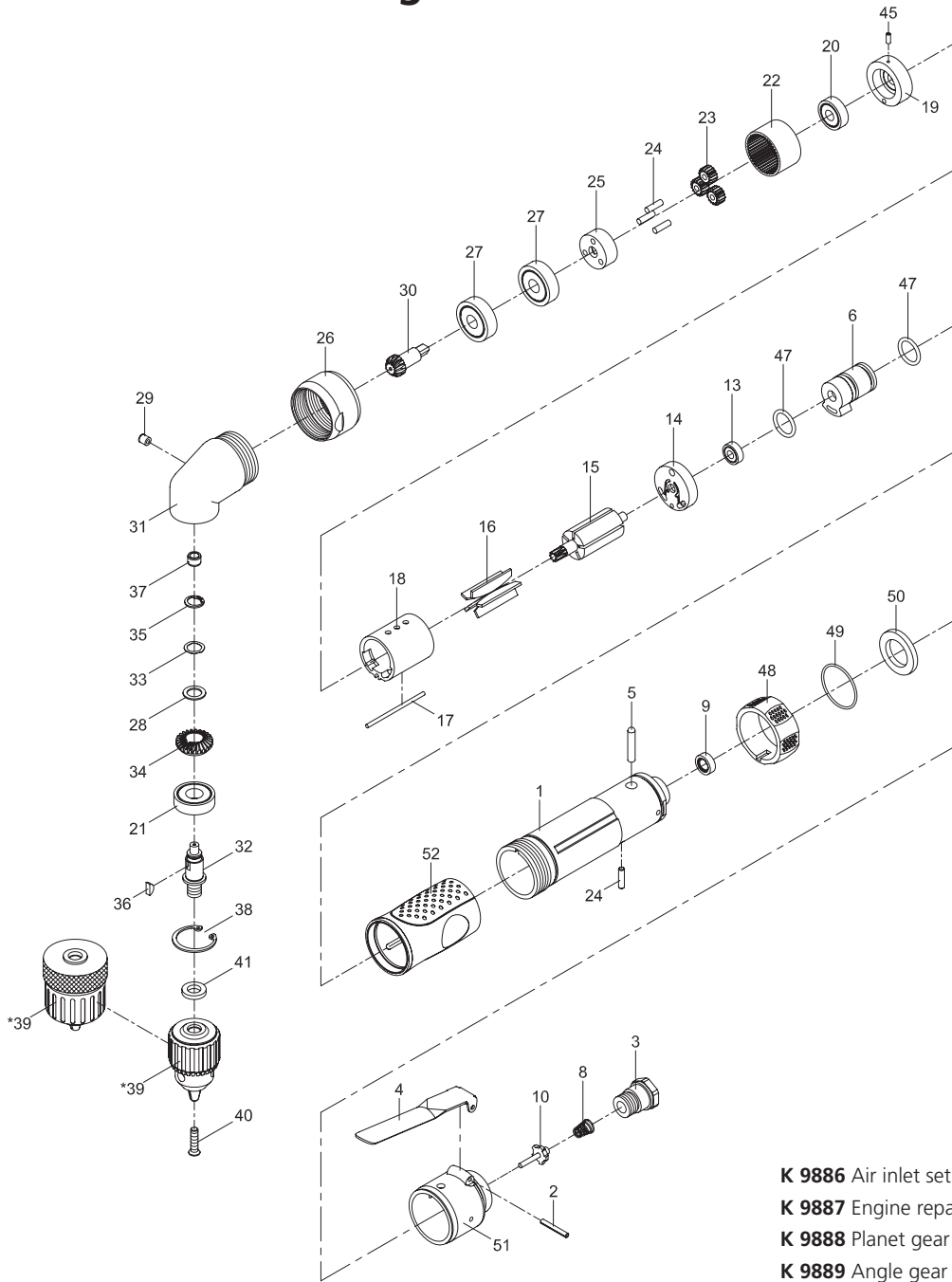


3/8" Reversible angle drill

K 9885



- K 9886** Air inlet set: Pos 3, 50
- K 9887** Engine repair set: Pos 2, 13, 16, 47, 49
- K 9888** Planet gear set: Pos 20, 22, 23, 27
- K 9889** Angle gear set: Pos 21, 30, 34, 37
- K 9890** Trottle set: Pos 2, 4, 8, 10

Pos.	Parts No.	Description
1		Motor housing
2	K 9887, K 9890	Spring pin
3	K 9886	Air inlet
4	K 9890	Trottle lever
5		Pin
6		Reverse valve
8	K 9890	Spring
9		Rubber spacer
10	K 9890	Valve stem
13	K 9887	Ball bearing
14		Rear end plate
15		Rotor
16	K 9887	Rotor blade (5 pcs.)
17		Pin
18		Cylinder
19		Front end plate
20	K 9888	Ball bearing
21	K 9889	Ball bearing
22	K 9888	Internal gear
23	K 9888	Planet gear (3 pcs.)
24		Pin (4 pcs.)
25		Reduction spindle
26		Lock nut

Pos.	Parts No.	Description
27	K 9888	Ball bearing (2 pcs.)
28		Washer
29		Oil cap
30	K 9889	Bevel gear
31		Angle housing
32		Spindle
33		Wave washer
34	K 9889	Bevel gear
35		Retaining ring
36		Key
37	K 9889	Bushing
38		Retaining ring
39	KR 9814-3	Industrial keyless chuck
40		Screw
41		Washer
45		Spring pin
47	K 9887	O-ring (2 pcs.)
48		Reversing valve knob
49	K 9887	O-ring
50	K 9886	Muffler material
51		Rear cover
52		Rubber grip