

**Kamasa-TOOLS®**

Cut-off tool  
400 mm

K 9836



CE

This tool is designed for cutting metal, plastic and similar materials in confined spaces. A 75 or 100 mm cutting disc shall be used.

## **SAFETY AND PRECAUTION**

**Read these safety instructions before starting to use the tool and follow the instructions**

- 1 Always use impact resistant eye protection when operating a pneumatic tool.
- 2 Always be aware that hearing protection is recommended at sound levels above 85 dBA, 2003/10/EG.
- 3 Vibration, repetitive motions or uncomfortable positions may be harmful to your hands or arms. Stop using any tool if discomfort, tingling feeling or pain occurs, seek medical advice before resuming use.
- 4 Keep unqualified persons, children, etc. away from the tool.
- 5 Never use oxygen and combustible gas as an air supply for the tool which may be ignited by sparks and cause fire or explosion.
- 6 This power tool is not intended for use in potentially explosive atmospheres and is not insulated against coming into contact with electric power.
- 7 Never use gasoline or other flammable liquids to clean the tool.
- 8 Do not expose air tools to rain. Do not use air tools in damp or wet locations.
- 9 When not in use, keep tools in a dry place, either locked up or in a high place, out of the reach of children.
- 10 Only qualified and trained operators should install, adjust or use power tools.
- 11 Do not modify this power tool. Modifications can reduce the effectiveness of safety measures and increase the risks to the operator.

- 12 Ensure that the maximum operating speed of the abrasive is equal to or greater than the rated speed of the spindle.
- 13 Check the protective guard on a regular basis. The protective guard must be securely attached to the device and in good condition.
- 14 Never put the device down before the tool has come to a complete stop. Lay the device down in a secure location.
- 15 Do not use the tool if it has been damaged.
- 16 Failure of a work piece, accessories or even of the power tool itself can generate high-velocity projectiles.
- 17 Entanglement hazards can result in choking, scalping and/or lacerations if loose clothing, bracelets, neckwear, hair or gloves are not kept away from the tool and accessories.
- 18 Always shut off air supply, drain hose of air pressure and disconnect tool from air supply when not in use, before changing accessories or when making repairs.
- 19 Do not exceed the maximum air pressure, see Specifications in this manual
- 20 Never carry an air tool by the hose.
- 21 Preferably shut off the air supply before changing disc or at least ensure that the hands are well clear of the operating trigger.

# PRODUCT SPECIFICATIONS

Model No.	K 9836
Revolutions	14000 rpm
Cutting disc	75 or 100 mm
Air connection	¼" NPT
Sound level	85,5 dBA
Vibration level	3,8 m/s <sup>2</sup>
Air consumption	113 l/m
Max operating pressure	6,3 bar
Length	400 mm
Weight	1,7 kg

# MAJOR COMPONENTS



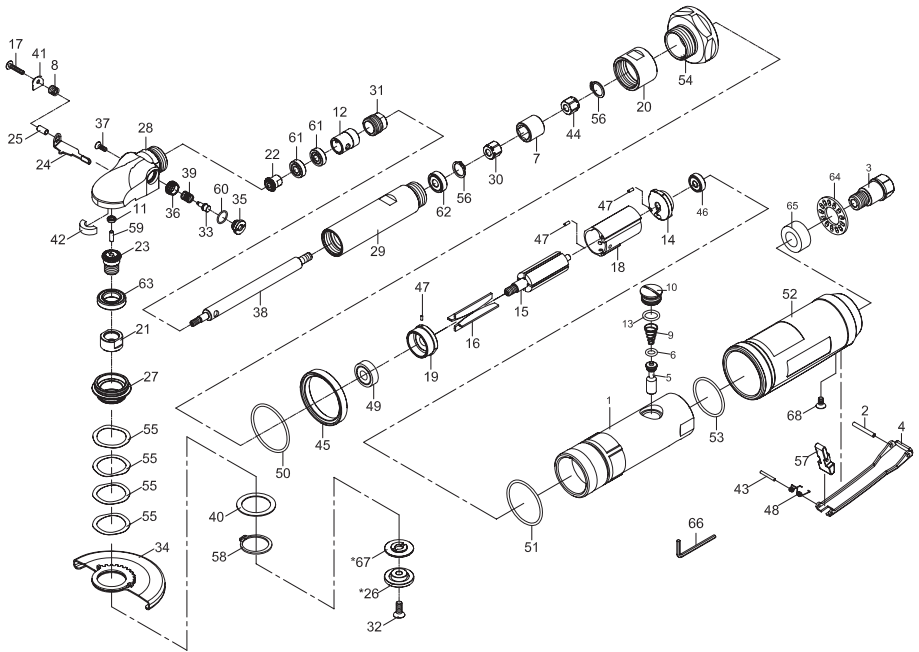
# **OPERATION INSTRUCTIONS**

- 1 Screw the hose connection on to the compressed air connection.
- 2 Fit the cutting disc, make sure it lays flat.
- 3 Position the support flange. It is fitted correctly when it cannot be turned on the spindle.
- 4 Attach the screw and tighten. Keep the spindle locking knob pressed in to prevent the spindle from rotating.

# **MAINTENANCE**

- 1 If the tool is used every day, disassemble and inspection is recommended every 6 months.
- 2 Keep the casing dry, clean and free from oil. Never use brake fluid, petrol or solvent for cleaning.
- 3 Check screws for tight fitting.
- 4 Air tools require lubrication throughout the life of the tool. Since the compressed air driving the motor contains water, the tool must be lubricated daily. We also recommend water separator in the air supplying system.
- 5 Avoid storing the tool in a location subject to high humidity. If the tool is left as it is used, the residual moisture inside the tool can cause rust. Before storage, lubricate tool and run it for a few seconds.
- 6 If the tool is too seriously damaged to be used anymore, recycle raw material instead of disposing as waste. The machine, accessories and packaging should be sorted for environmental-friendly recycling. Check with your local authority or retailer for recycling advice.
- 7 Tools repair and maintenance should be carried out by an authorized service center.

# PARTS K 9836



# PARTS LIST K 9836

No	Parts name	Qt	Spare part No
1	Motor housing	1	
2	Spring pin	1	
3	Air inlet	1	KR 9836-3
4	Trottle lever	1	
5	Valve shaft	1	
6	O-ring	1	KR 9836-1
7	Connector	1	
8	Spring pin	1	
9	Valve spring	1	
10	Plug	1	
11	Ball bearing	1	
12	Bushing	1	
13	O-ring	1	KR 9836-1
14	Rear end plate	1	
15	Rotor	1	
16	Rotor blade	4	KR 9836-1
17	Screw	1	
18	Cylinder	1	
19	Front end plate	1	
20	Connector nut	1	
21	Lock nut	1	
22	Bevel gear	1	KR 9836-2
23	Bevel gear	1	KR 9836-2
24	Lock bar	1	
25	Bushing	1	
26	Flange nut	1	KR 9836-4
27	Lock nut	1	
28	Front housing	1	
29	Connector pipe	1	
30	Nut	1	
31	Lock nut	1	
32	Screw	1	KR 9836-4
33	Stop button	1	
34	Disc cover	1	KR 9836-4

No	Parts name	Qt	Spare part No
35	Button seat	1	
36	Nut	1	
37	Screw	1	
38	Roller shaft	1	
39	Spring	1	
40	Washer	1	
41	Washer	1	
42	Oil felt	1	
43	Spring pin	1	
44	Nut	1	
45	Decoration ring	1	
46	Ball bearing	1	KR 9836-1
47	Spring pin	1	
48	Spring	1	
49	Ball bearing	1	KR 9836-1
50	O-ring	1	KR 9836-1
51	O-ring	1	KR 9836-1
52	Grip	1	
53	O-ring	1	KR 9836-1
54	Clamp nut	1	
55	Wave washers	1	
56	Retaining ring	1	
57	Safety bar	1	
58	Retaining ring	1	KR 9836-2
59	Pin	1	
60	O-ring	1	
61	Ball bearing	2	KR 9836-2
62	Ball bearing	1	KR 9836-2
63	Ball bearing	1	KR 9836-2
64	Diffuser	1	KR 9836-3
65	Muffler	1	KR 9836-3
66	Hex key wrench	1	
67	Flange	1	KR 9836-4
68	Screw	1	

## Spare part No

KR 9836-1  
 KR 9836-2  
 KR 9836-3  
 KR 9836-4

## Kit

Motor repair kit: Pos 6, 13, 16, 46, 49, 50, 51, 53  
 Gearing repair kit: Pos 22, 23, 58, 61, 62, 63  
 Air inlet kit: Pos 3, 64, 65  
 Disc fastener kit: Pos 26, 32, 34, 67



Kamasa Tools is a registered trademark of KG Knutsson AB, 191 81 Sollentuna, Sweden  
CE declaration for this product is available as a file on [www.kamasatools.com](http://www.kamasatools.com)

K 9836

[www.kamasatools.com](http://www.kamasatools.com)