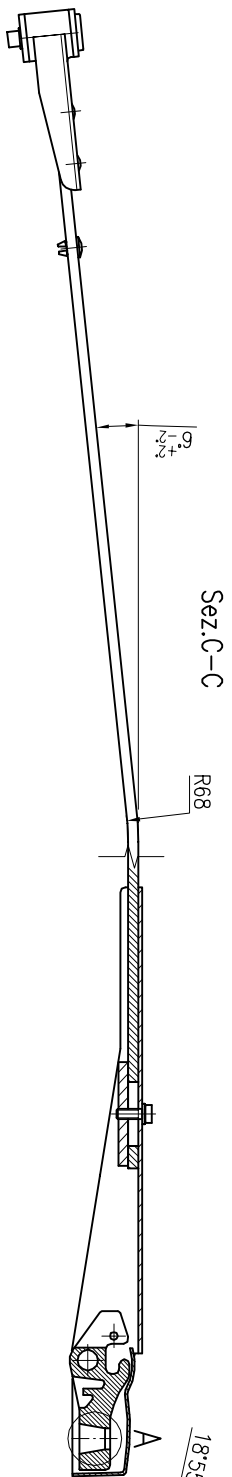
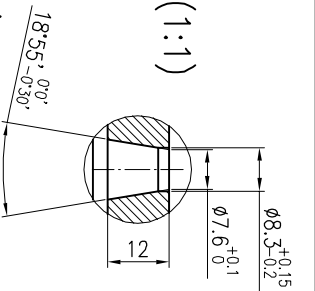


Dettaglio Cono C10/12xM8 DIN 72783
Cone Detail C10/12xM8 DIN 72783

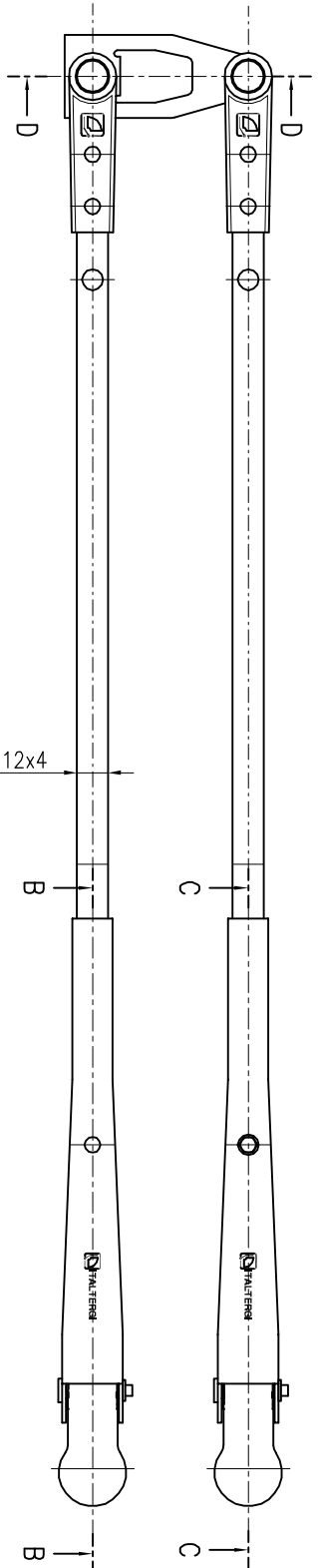
A (1:1)



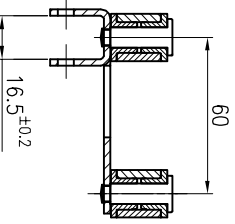
Carico/Load 12±0,5N

Sez. B-B

R537⁺³



Sez. D-D



Tolleranze Geometriche		A3	Denominazione	Materiale
DA	A			
0	≤ 6	$\pm 0,1$	B 12x4 pan reg mm537 piega neg	
>6	≤ 30	$\pm 0,2$		
>30	≤ 120	$\pm 0,3$	Mod. att sella i=60 pic C10/12xM8	
>120	≤ 315	$\pm 0,5$		
>315	≤ 1000	$\pm 0,8$	Succede al codice	
>1000	≤ 2000	$\pm 1,2$		
>2000	≤ 4000	$\pm 2,0$	Scala	1:2
>4000	≤ 10000	$\pm 3,0$		
>10000	≤ 20000	$\pm 5,0$	Codice sperimentale	
>20000	≤ 40000	$\pm 10,0$		



ITALTERGI S.r.l.

Date 13/11/2009 Firma Valenti M. Visto

BC.001518

Codice disegno

B73.008345